

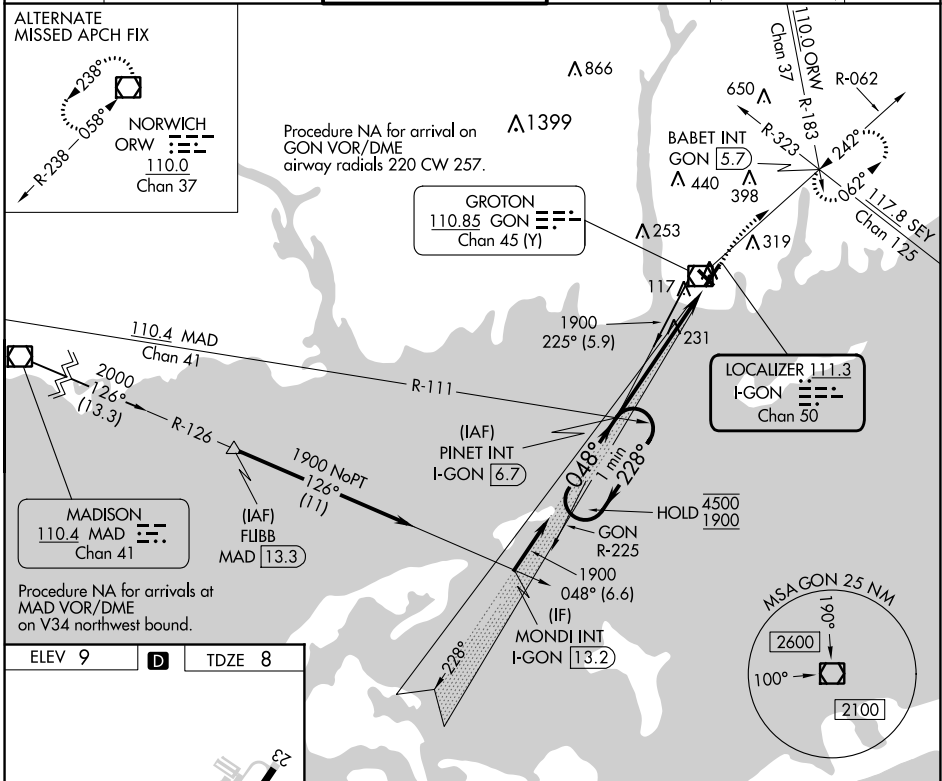
LOC/DME I-GON <b>111.3</b> Chan <b>50</b>	APP CRS <b>048°</b>	Rwy Idg TDZE Apt Elev	<b>5000</b> <b>8</b> <b>9</b>
---	------------------------	-----------------------------	-------------------------------------

# ILS or LOC RWY 5

GROTON-NEW LONDON (GON)

		MISSED APPROACH: Climbing right turn to 2100 on GON VOR/DME R-062 to BABET INT/GON 5.7 DME and hold, continue climb-in-hold to 2100.

ATIS <b>127.0</b>	PROVIDENCE APP CON * <b>125.75 319.2</b>	GROTON TOWER * <b>125.6 (CTAF) 0 236.775</b>	GND CON <b>121.65 236.775</b>	CLNC DEL <b>119.85</b> (when twr closed)	CLNC DEL <b>121.65</b>
----------------------	---	---	----------------------------------	--	---------------------------

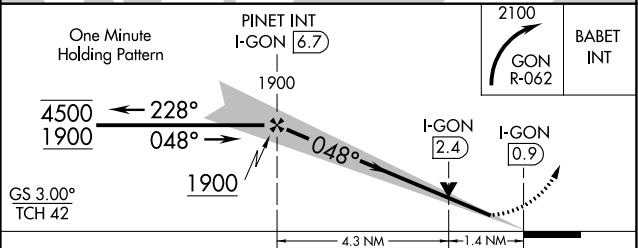


ELEV 9	<b>D</b>	TDZE 8
--------	----------	--------

REIL Rwy 23 and 33  
HIRL Rwy 5-23 and 15-33

FAF to MAP 5.7 NM

Knots	60	90	120	150	180
Min:Sec	5:42	3:48	2:51	2:17	1:54



CATEGORY	A	B	C	D
S-ILS 5 *	208/24 200 (200-1/2)			
S-LOC 5	500/24	492 (500-1/2)	500/50	492 (500-1)
CIRCLING	580-1	620-1	700-2	840-2 3/4
	571 (600-1)	611 (700-1)	691 (700-2)	831 (900-2 3/4)

NE-1, 26 DEC 2024 to 23 JAN 2025

NE-1, 26 DEC 2024 to 23 JAN 2025