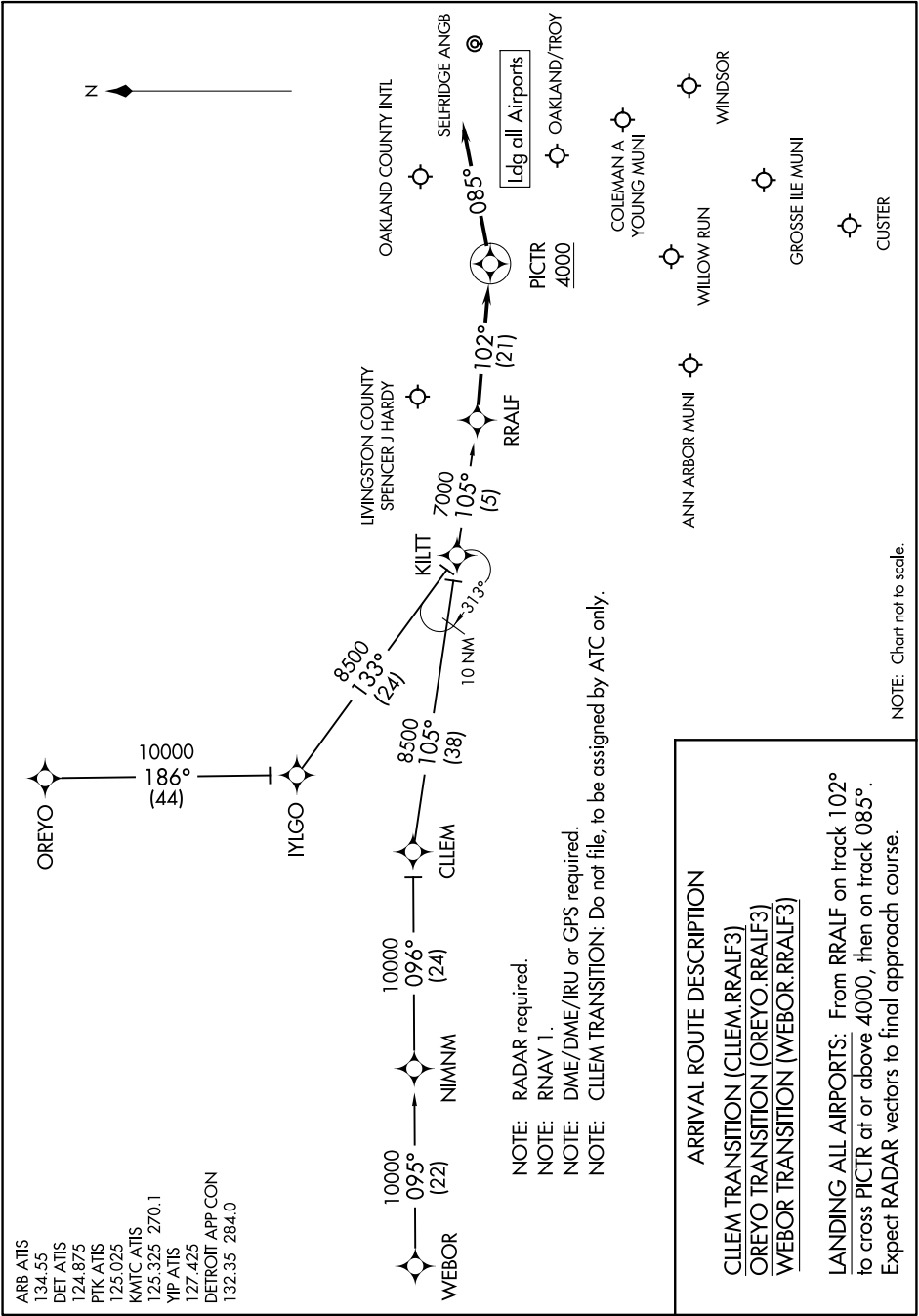


ARB ATIS 134.55  
 DET ATIS 124.875  
 PKT ATIS 125.025  
 KMTC ATIS 125.325 270.1  
 YIP ATIS 127.425  
 DETROIT APP CON 132.35 284.0



NOTE: RADAR required.  
 NOTE: RNAV 1.  
 NOTE: DME/DME/IRU or GPS required.  
 NOTE: CLEEM TRANSITION: Do not file, to be assigned by ATC only.

**ARRIVAL ROUTE DESCRIPTION**  
 CLEEM TRANSITION (CLEEM.RRALF3)  
 OREYO TRANSITION (OREYO.RRALF3)  
 WEBOR TRANSITION (WEBOR.RRALF3)

**LANDING ALL AIRPORTS:** From RRALF on track 102° to cross PICTR at or above 4000, then on track 085°. Expect RADAR vectors to final approach course.

NOTE: Chart not to scale.