

WAAS CH 40312 W20A	APP CRS 203°	Rwy Idg 6005 TDZE 418 Apt Elev 433
--	------------------------	---

RNAV (GPS) RWY 20

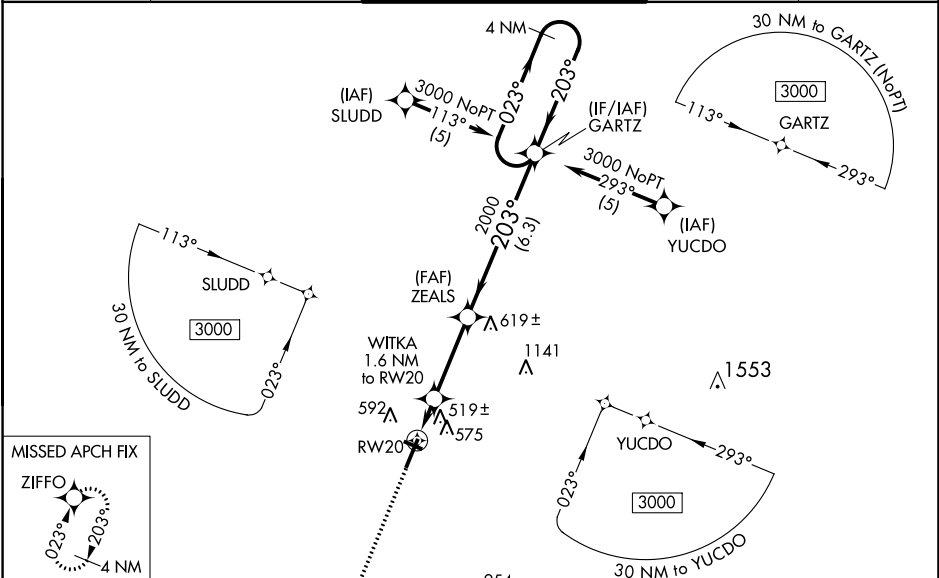
JACKSON RGNL (MKL)

RNP APCH - GPS

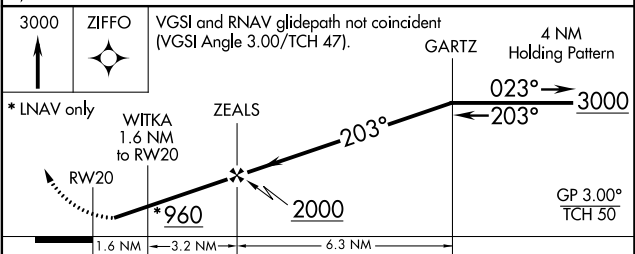
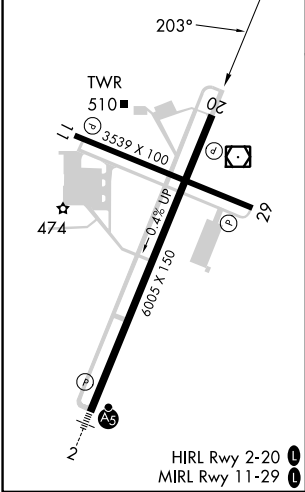
▼ Rwy 20 helicopter visibility reduction below 3/4 SM NA. For uncompensated Baro-VNAV systems, LNAV/VNAV NA below -15°C or above 48°C. Baro-VNAV NA when using Dyersburg altimeter setting. When local altimeter setting not received, use Dyersburg altimeter setting: increase LPV DA to 802 feet and visibility all Cats 1/2 SM; increase LNAV/VNAV DA to 910 feet and visibility all Cats 1/4 SM; increase all MDA 100 feet and visibility LNAV Cat C and D and Circling Cat C 1/2 SM, and Circling Cat D 1/2 SM.

MISSED APPROACH:
Climb to 3000 direct
ZIFFO and hold.

ASOS 119.325	MEMPHIS CENTER 134.65 316.15	JACKSON TOWER ★ 127.15 (CTAF) 249.95	GND CON 120.9	UNICOM 122.95
------------------------	--	---	-------------------------	-------------------------



ELEV 433	TDZE 418
-----------------	-----------------



CATEGORY	A	B	C	D
LPV DA		710-1	292 (300-1)	
LNAV/VNAV DA		818-1½	400 (400-1½)	
LNAV MDA		780-1	362 (400-1)	780-1¼ 362 (400-1¼)
CIRCLING	900-1 467 (500-1)	920-1 487 (500-1)	960-1½ 527 (600-1½)	1100-2 667 (700-2)

SE-1, 26 DEC 2024 to 23 JAN 2025

SE-1, 26 DEC 2024 to 23 JAN 2025