

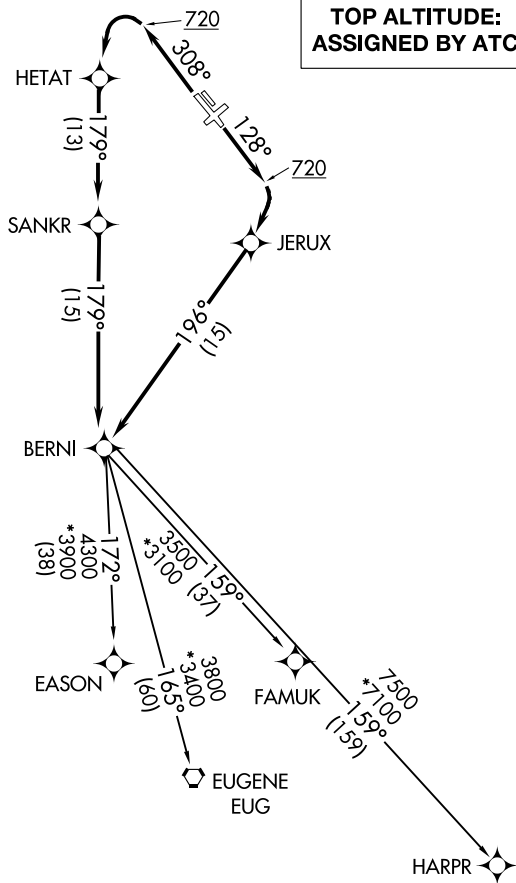
(BERNI3.BERNI) 18032

# BERNI THREE DEPARTURE (RNAV) AL-5063 (FAA)

PORTLAND-HILLSBORO (HIO)  
PORTLAND, OREGON

ATIS  
127.65  
GND CON  
121.7  
HILLSBORO TOWER \*  
119.3 (CTAF) 239.3  
PORTLAND DEP CON  
126.0 269.175

**TOP ALTITUDE:  
ASSIGNED BY ATC**



NOTE: GPS required.  
NOTE: RNAV 1.  
NOTE: RADAR required.  
NOTE: Turbojet aircraft only.

### TAKEOFF MINIMUMS

Rwys 2, 13L, 20, 31R: NA-ATC.  
Rwys 13R, 31L: Standard with minimum  
climb of 500' per NM  
to 720.

NOTE: Chart not to scale.

### DEPARTURE ROUTE DESCRIPTION

**TAKEOFF RUNWAY 13R:** Climb heading 128° to 720, then climbing right turn direct JERUX, then on track 196° to BERNI, thence . . .

**TAKEOFF RUNWAY 31L:** Climb heading 308° to 720, then climbing left turn direct HETAT, then on track 179° to SANKR, then on track 179° to BERNI, thence . . .

. . . on (transition). Maintain assigned altitude. Expect filed altitude 10 minutes after departure.

EASON TRANSITION (BERNI3.EASON)

EUGENE TRANSITION (BERNI3.EUG)

FAMUK TRANSITION (BERNI3.FAMUK)

HARPR TRANSITION (BERNI3.HARPR)

# BERNI THREE DEPARTURE (RNAV)

(BERNI3.BERNI) 01FEB18

PORTLAND, OREGON  
PORTLAND-HILLSBORO (HIO)

NW-1, 26 DEC 2024 to 23 JAN 2025

NW-1, 26 DEC 2024 to 23 JAN 2025