

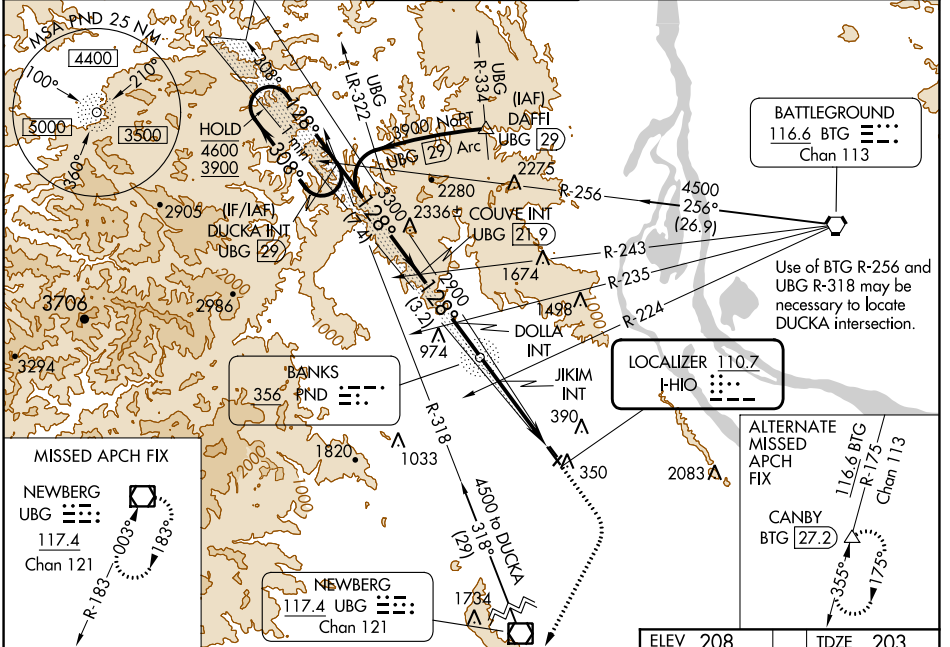
LOC I-HIO 110.7	APP CRS 128°	Rwy Idg TDZE Apt Elev	6600 203 208
---------------------------	------------------------	-----------------------------	---

ILS or LOC RWY 13R

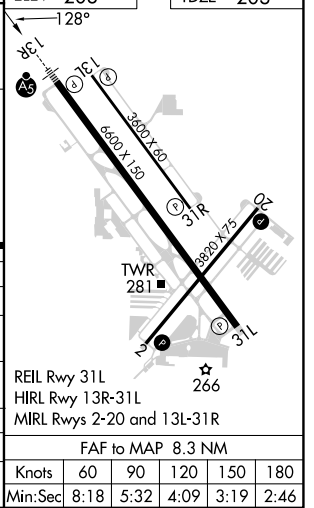
PORTLAND-HILLSBORO (HIO)

Circling to Rwy 13L, 31R NA at night. Inop table does not apply to S-LOC Rwy 13R all Cats. For inop ALS, increase JIKIM fix minimums Cat C/D visibility to 1 3/8 SM.		MISSED APPROACH: Climb to 1000 then climbing right turn to 3000 direct UBG VOR/DME and hold. Continue climb-in-hold to 3000.

ATIS 127.65	PORTLAND APP CON 126.0 269.175	HILLSBORO TOWER * 119.3 (CTAF) 239.3	GND CON 121.7	UNICOM 122.95
-----------------------	--	--	-------------------------	-------------------------



DUCKA INT UBG (29)		COUVE INT UBG (21.9)		DOLLA INT		JIKIM INT	
One Minute Holding Pattern							
4600	← 308°	7.4 NM	3.2 NM	3.9 NM	4.4 NM	*LOC only.	
3900	128° →	3300		2900		*1660	
GS 3.00°							
TCH 48							
CATEGORY	A	B	C	D			
S-ILS 13R	403/24		200 (200-1/2)				
S-LOC 13R	1660/60 1457 (1500-1 1/4)	1660-1 1/2 1457 (1500-1 1/2)	1660-3 1457 (1500-3)				
CIRCLING	1660-1 1/4 1452 (1500-1 1/4)	1660-1 1/2 1452 (1500-1 1/2)	1660-3 1452 (1500-3)				
JIKIM FIX MINIMUMS (DUAL VOR RECEIVERS REQUIRED)							
S-LOC 13R	680/24	477 (500-1/2)	680/50		477 (500-1)		
CIRCLING	680-1 472 (500-1)	720-1 512 (600-1)	720-1 1/2 512 (600-1 1/2)	980-2 1/2 772 (800-2 1/2)			



NW-1, 26 DEC 2024 to 23 JAN 2025

NW-1, 26 DEC 2024 to 23 JAN 2025