

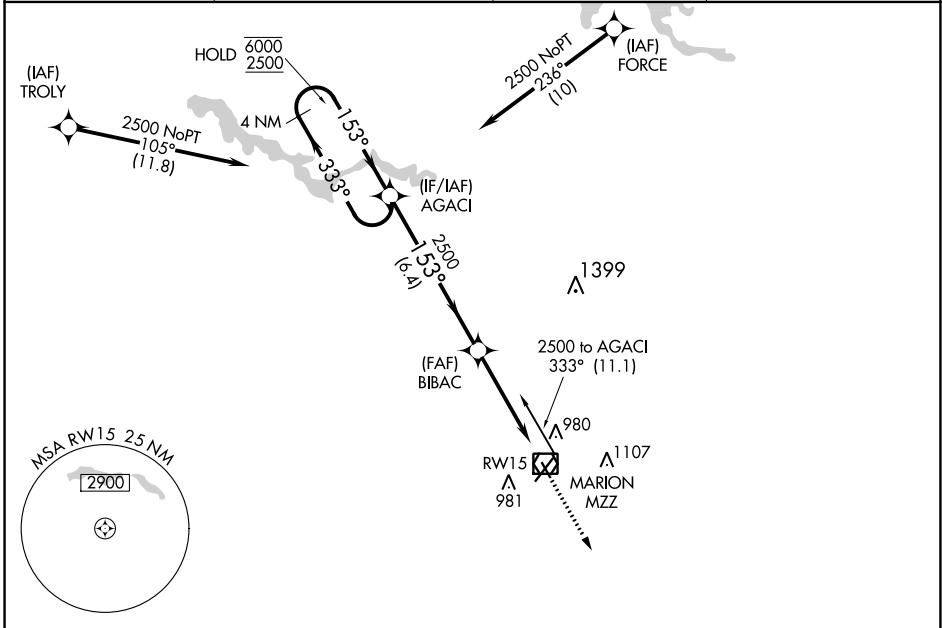
APP CRS 153°	Rwy Idg 3456 TDZE 859 Apt Elev 859
------------------------	---

RNAV (GPS) RWY 15

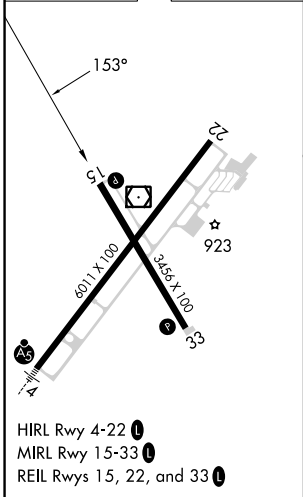
MARION MUNI - MCKINNEY FLD (MZZ)

RNP APCH - GPS.		MISSED APPROACH: Climb to 2500 direct AKUYA and hold.	
Rwy 15 helicopter visibility reduction below 3/4 SM NA. Circling Rwy 15 NA at night.			

AWOS-3 108.6	GRISSOM APP CON ★ 121.05 338.275	CLNC DEL 120.0	UNICOM 122.7 (CTAF) 0
------------------------	--	--------------------------	---------------------------------



ELEV 859	TDZE 859
----------	----------



MARION, INDIANA
Amdt 1A 13JUN24

4 NM Holding Pattern	AGACI	BIBAC	2500	AKUYA
6000 ← 333°	→ 153°	2500	1.2 NM to RWY 15	
2500			3.25° TCH 40	
← 6.4 NM		← 3.4 NM	← 1.2 NM	

CATEGORY	A	B	C	D
LNAV MDA	1300-1	441 (500-1)	1300-1 3/8	441 (500-1 3/8)
CIRCLING	1300-1 441 (500-1)	1320-1 461 (500-1)	1420-1 1/2 561 (600-1 1/2)	1500-2 641 (700-2)

MARION MUNI - MCKINNEY FLD (MZZ)
RNAV (GPS) RWY 15

40°29'N-85°41'W

EC-2, 26 DEC 2024 to 23 JAN 2025

EC-2, 26 DEC 2024 to 23 JAN 2025