

WAAS CH 53401 W04A	APP CRS 043°	Rwy Idg TDZE Apt Elev	4500 2132 2135
----------------------------------------	------------------------	-----------------------------	-------------------------------------------

RNAV (GPS) RWY 4

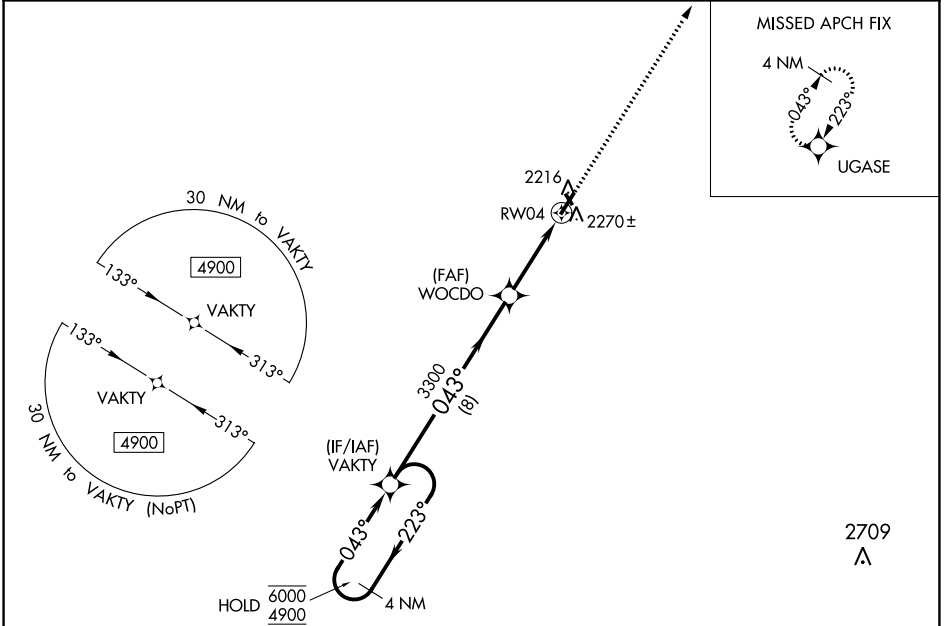
CATTARAUGUS COUNTY-OLEAN (OLE)

RNP APCH-GPS.

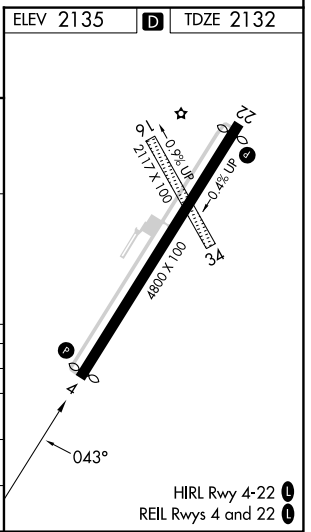
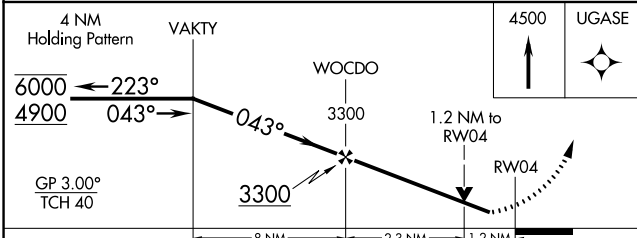
⚠ Circling NA to Rwys 16 and 34. Rwy 4 helicopter visibility reduction below $\frac{3}{4}$ SM NA. When VGSI inop, Circling Rwy 22 NA at night. For uncompensated Baro-VNAV systems, LNAV/VNAV NA below -19°C or above 54°C.

MISSED APPROACH: Climb to 4500 direct UGASE and hold.

AWOS-3 118.375	CLEVELAND CENTER 124.325 353.85	UNICOM 122.8 (CTAF) 1
--------------------------	-------------------------------------------	---------------------------------



ELEV 2135	D	TDZE 2132
-----------	----------	-----------



CATEGORY	A	B	C	D
LPV DA		2382- $\frac{3}{4}$	250 (300- $\frac{3}{4}$)	
LNAV/VNAV DA		2549-1 $\frac{1}{8}$	417 (500-1 $\frac{1}{8}$)	
LNAV MDA	2560-1	428 (500-1)	2560-1 $\frac{1}{4}$	428 (500-1 $\frac{1}{4}$)
C CIRCLING	2620-1	485 (500-1)	2680-1 $\frac{1}{2}$ 545 (600-1 $\frac{1}{2}$)	2720-2 585 (600-2)

NE-2, 26 DEC 2024 to 23 JAN 2025

NE-2, 26 DEC 2024 to 23 JAN 2025