

TACAN NMM Chan 56	APCH CRS 181°	Rwy ldg TDZE Arprt Elev 8000 316 316
-----------------------------	-------------------------	--

AL-5079 [USN]

MERIDIAN NAS (MC CAIN FIELD) (KNMM)

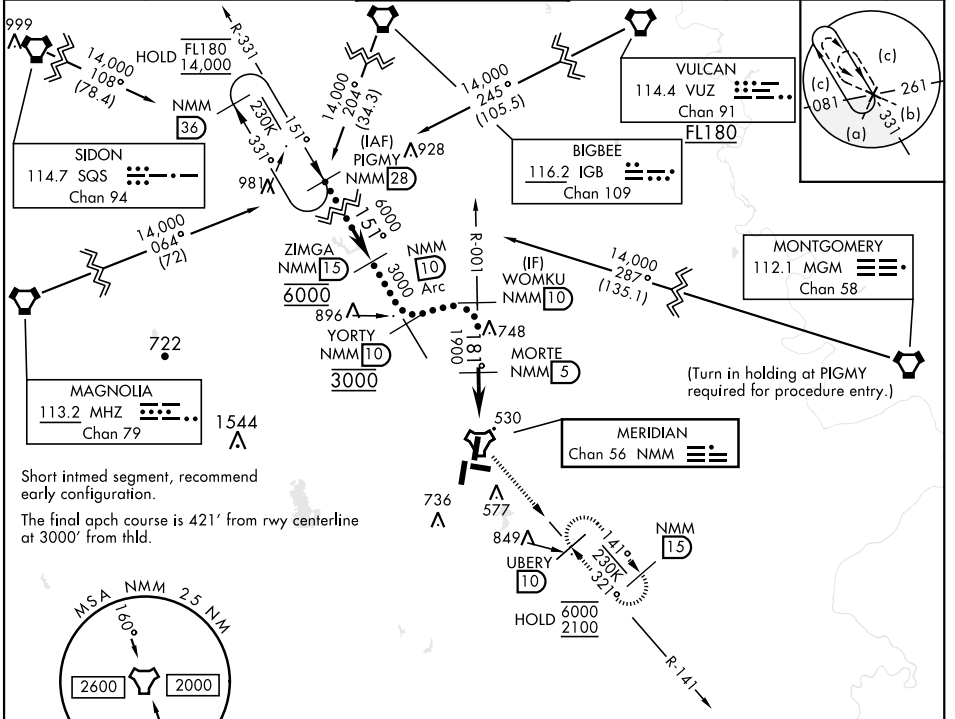
DME required.



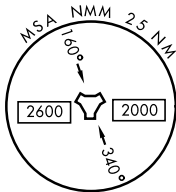
MISSED APPROACH: Climb to 2100 via NMM R-001 to TACAN then via R-141 to UBERY and hold.

▼ * When ALS inop, increase vis to 1 3/8 miles.

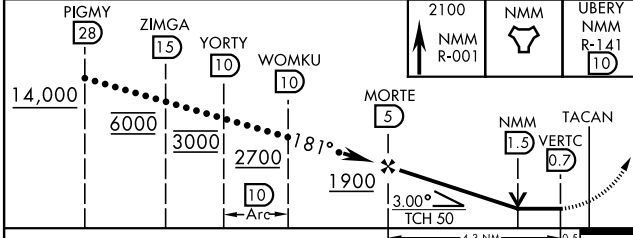
ATIS ★ 290.525	APP CON 120.95 276.4	NAVY MC CAIN TOWER ★ 126.2 340.2	GND CON 336.4	CLNC DEL 301.0	ASR/ PAR
--------------------------	--------------------------------	--	-------------------------	--------------------------	-------------



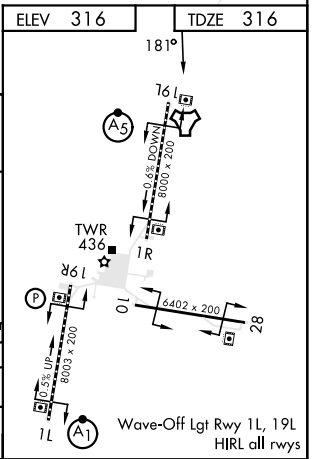
Short inmed segment, recommend early configuration.
The final apch course is 421' from rwy centerline at 3000' from hld.



EMERG SAFE ALT 100 NM 3700



CATEGORY	C	D	E
S-19L *	780-1	464	(500-1)
CIRCLING	840-1 1/2 524 (600-1 1/2)	880-2 564 (600-2)	1080-2 3/4 764 (800-2 3/4)



SC-4, 26 DEC 2024 to 23 JAN 2025

SC-4, 26 DEC 2024 to 23 JAN 2025