

TACAN	NMM	APCH CRS	Rwy Ldg	8003
Chan	56	025°	TDZE	254
			Arpt Elev	316

AL-5079 [USN]

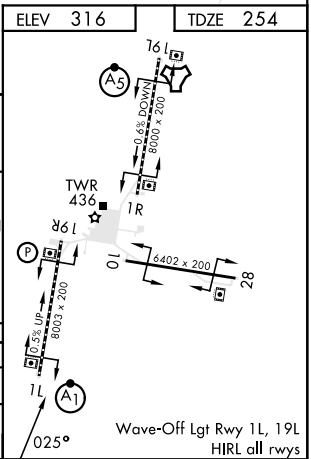
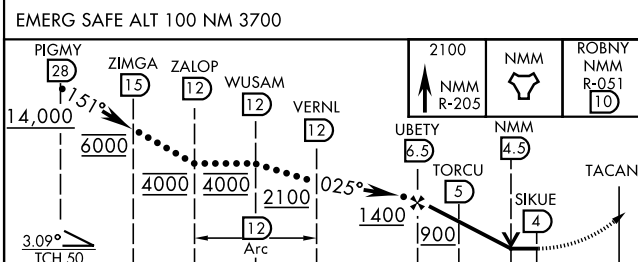
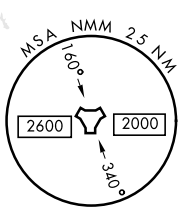
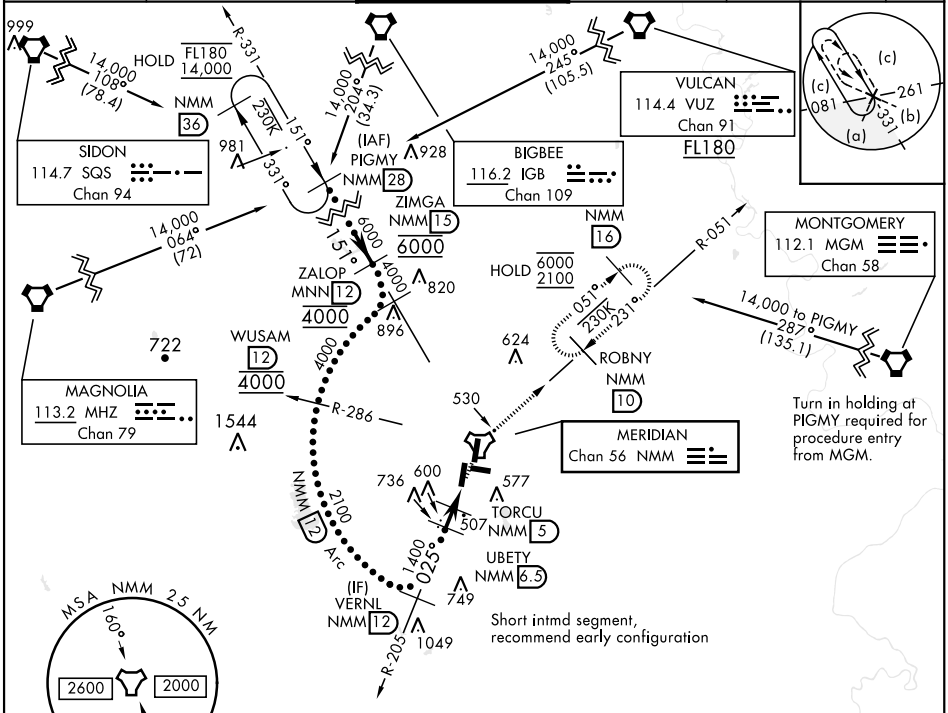
MERIDIAN NAS (MC CAIN FIELD) (KNMM)

When ALS inop, increase vis to 1½ miles.

ALSF-1

MISSED APPROACH: Climb to 2100 via NMM R-205 to NMM TACAN then via R-051 to ROBNY and hold.

ATIS * 290.525	APP CON 120.95 276.4	NAVY MC CAIN TOWER * 126.2 340.2	GND CON 336.4	CLNC DEL 301.0	ASR/ PAR
--------------------------	--------------------------------	--	-------------------------	--------------------------	-------------



CATEGORY	C	D	E
S-1L *	760-1	506	(500-1)
CIRCLING	840-1½ 524 (600-1½)	880-2 564 (600-2)	1080-2¾ 764 (800-2¾)

SC-4, 26 DEC 2024 to 23 JAN 2025

SC-4, 26 DEC 2024 to 23 JAN 2025