

MERIDIAN, MISSISSIPPI

# RNAV (GPS) RWY 1L

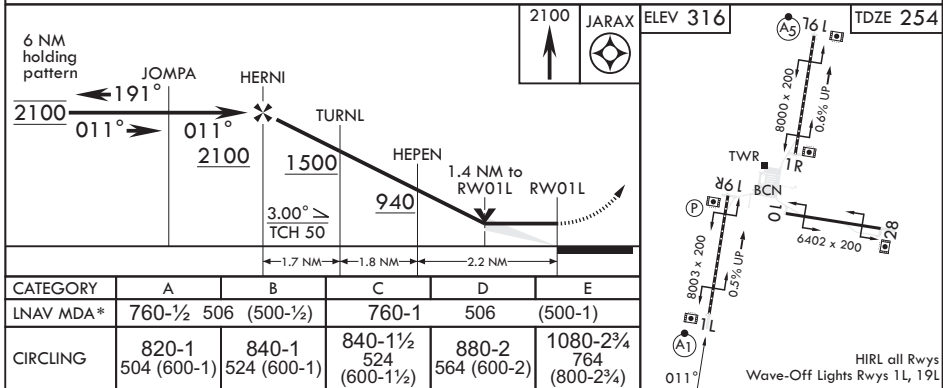
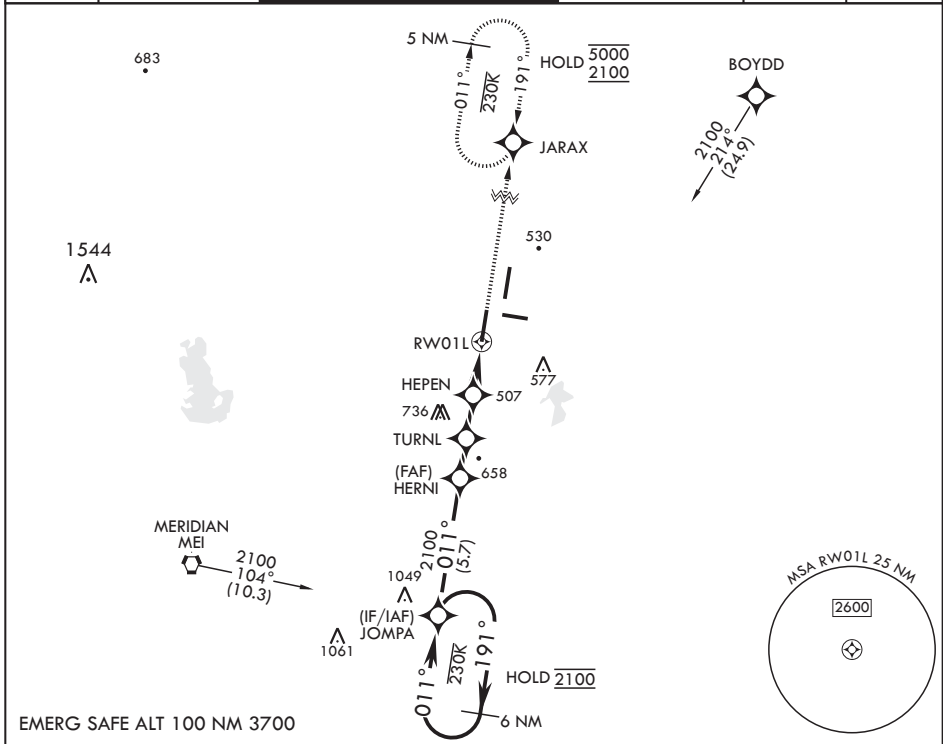
APCH CRS <b>011°</b>	Rwy Idg <b>8003</b>
	TDZE <b>254</b>
	Arprt Elev <b>316</b>

AL-5079 (USN)

MERIDIAN NAS (MC CAIN FLD) (KNMM)

RNP APCH.	ALSF-1	MISSED APPROACH: Climb to 2100 direct JARAX and hold.
<p>▼ * When ALS inop, increase CAT AB vis to 1 mile, CAT CDE to 1 3/8 miles.</p>		

ATIS * <b>290.525</b>	APP CON <b>120.5 269.325 S</b> <b>379.275 N</b> <b>120.95 276.4 W</b> <b>121.275 348.7 E</b>	MC CAIN TOWER * <b>126.2 340.2 RWY 01L, 19L AND 28</b> <b>126.2 360.2 RWY 01R, 19R AND 10</b>	MC CAIN GND CON <b>336.4</b>	CLNC DEL <b>301.0</b>	ASR/PAR
--------------------------	--	---	---------------------------------	--------------------------	---------



MERIDIAN, MISSISSIPPI

32°33'N - 88°33'W

MERIDIAN NAS (MC CAIN FLD) (KNMM)

Amdt 4 08SEP22

# RNAV (GPS) RWY 1L

SC-4, 26 DEC 2024 to 23 JAN 2025

SC-4, 26 DEC 2024 to 23 JAN 2025