

ILS or LOC RWY 26

SIERRA VISTA MUNI-LIBBY AAF (FHU)

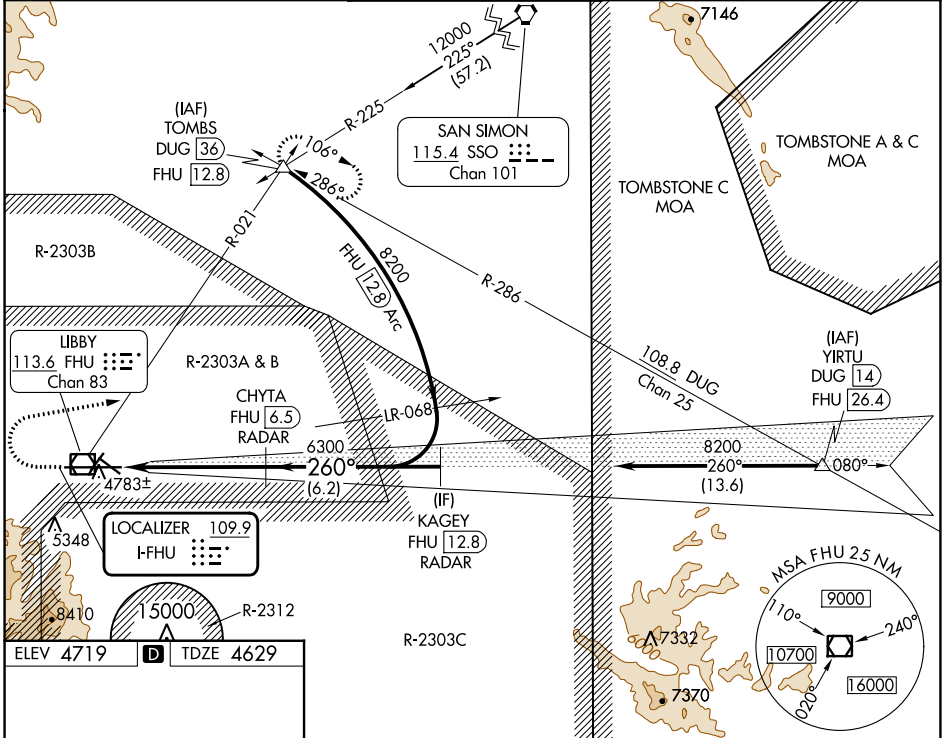
LOC I-FHU	APP CRS	Rwy Idg	12001
109.9	260°	TDZE	4629
		Apt Elev	4719

DME or RADAR required.

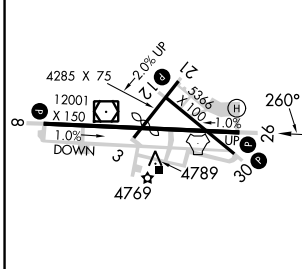
⚠ Circling NA south of Rwy 8 and 30.

MISSED APPROACH: Climb to 5300 then climbing right turn to 9500 on heading 067° and FHU VOR/DME R-021 to TOMBS INT/DUG 36 DME and hold, continue climb-in-hold to 9500.

ATIS	LIBBY AAF GCA*	LIBBY TOWER*	GND CON	UNICOM
134.75 263.025	127.05 254.25	124.95 (CTAF) 0 284.75	121.7 268.7	122.95



ELEV 4719	D	TDZE 4629
-----------	----------	-----------



5300	9500	TOMBS	VGSI and ILS glidepath not coincident (VGSI Angle 3.00/TCH 80).	KAGEY
↑	hdg 067°	FHU R-021	CHYTA	FHU 12.8
			FHU 6.5	RADAR
			FHU 1.4	
			6300	
			8200	
			GS 3.00°	TCH 49
			5.2 NM	6.2 NM

HIRL Rwy 8-26	
MIRL Rwy 3-21 and 12-30	
FAF to MAP 5.2 NM	
Knots	60 90 120 150 180
Min:Sec	5:12 3:28 2:36 2:05 1:44
CATEGORY	A B C D
S-ILS 26	4829-¾ 200 (200-¾)
S-LOC 26	5020-1 391 (400-1) 5020-1¼ 391 (400-1¼)
CIRCLING	5160-1 441 (500-1) 5180-1 461 (500-1) 5180-1½ 461 (500-1½) 5280-2 561 (600-2)

SW-4, 26 DEC 2024 to 23 JAN 2025

SW-4, 26 DEC 2024 to 23 JAN 2025