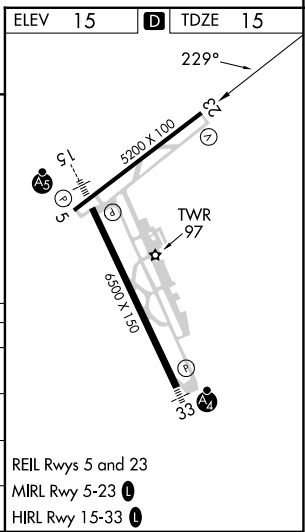
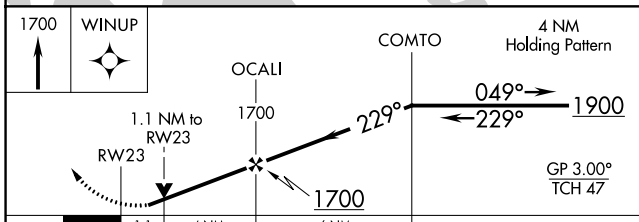
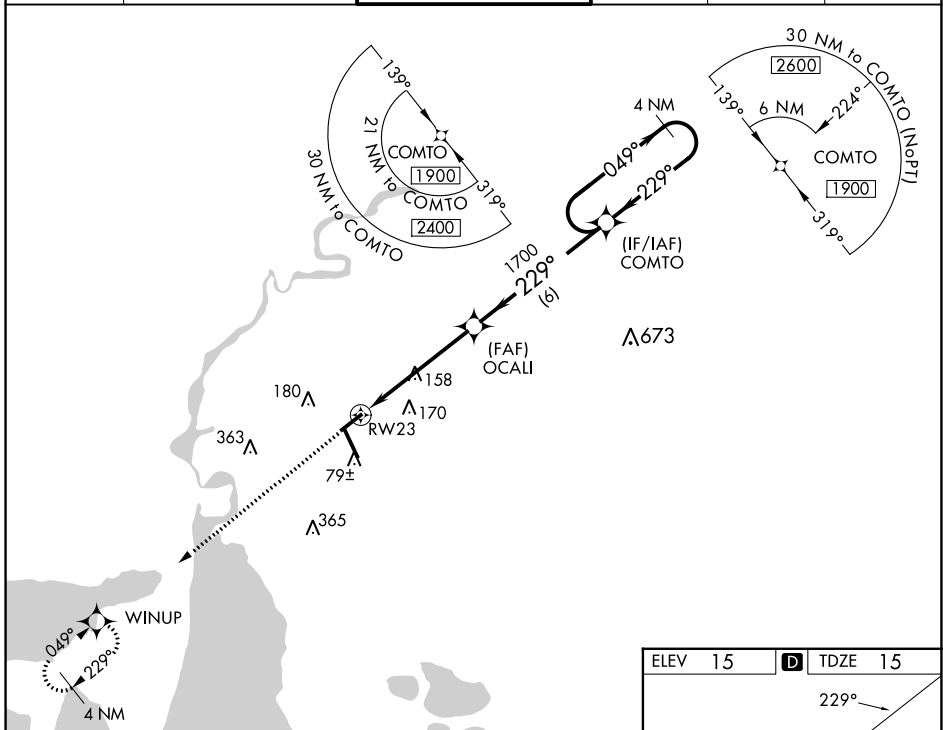


WAAS CH 61041 W23A	APP CRS 229°	Rwy Idg 5200 TDZE 15 Apt Elev 15
--	------------------------	---

RNAV (GPS) RWY 23

LAKE CHARLES RGNL (LCH)

RNP APCH - GPS.		MISSED APPROACH: Climb to 1700 direct WINUP and hold.	
⚠ For uncompensated Baro-VNAV systems, LNAV/VNAV NA below -2°C or above 54°C. ASR Rwy 23 helicopter visibility reduction below 3/4 SM NA.			
ATIS 118.75	LAKE CHARLES APP CON * 119.35 353.75	LAKE CHARLES TOWER * 120.7 (CTAF) 257.8	GND CON 121.8
		CLNC DEL 126.25	UNICOM 122.95



CATEGORY	A	B	C	D
LPV DA	265-3/4		250 (300-3/4)	
LNAV/VNAV DA	301-7/8		286 (300-7/8)	
LNAV MDA	420-1 405 (500-1)		420-1 1/8 405 (500-1 1/8)	
CIRCLING	440-1 425 (500-1)	480-1 465 (500-1)	580-1 1/2 565 (600-1 1/2)	680-2 665 (700-2)

REIL Rwy 5 and 23
MIRL Rwy 5-23
HIRL Rwy 15-33

SC-4, 26 DEC 2024 to 23 JAN 2025

SC-4, 26 DEC 2024 to 23 JAN 2025