

DUBLIN, VIRGINIA

AL-5084 (FAA)

24305

LOC I-PSK 110.9	APP CRS 058°	Rwy Idg TDZE Apt Elev 6201 2105 2105
---------------------------	------------------------	--------------------------------------------------------------------------

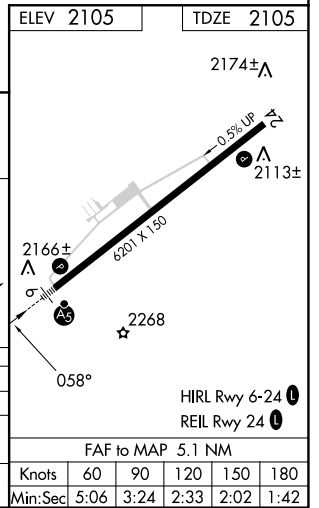
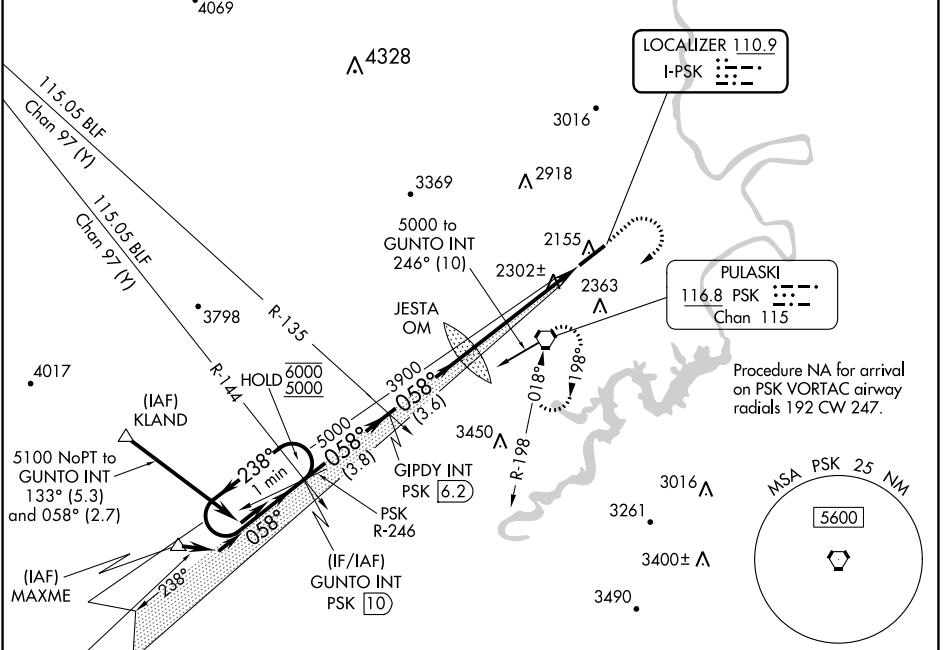
ILS or LOC Z RWY 6

NEW RIVER VALLEY (PSK)

NA Inop table does not apply to S-ILS 6 all Cats and S-LOC 6 Cats A and B. For inop ALS, increase S-LOC 6 Cat C/D visibility to 1 3/8 SM. Circling NA for Cat D northwest of Rwy 6-24.

MALSRL MISSED APPROACH: Climb to 3000 then climbing right turn to 5000 direct PSK VORTAC and hold, continue climb-in-hold to 5000.

AWOS-3 127.375	ROANOKE APP CON 126.0 339.8	ROANOKE CLNC DEL 121.7	UNICOM 122.7 (CTAF)
--------------------------	---------------------------------------	----------------------------------	-------------------------------



CATEGORY	ELEV 2105 TDZE 2105			
	A	B	C	D
S-ILS 6		2305-1	200 (200-1)	
S-LOC 6		2560-1	455 (500-1)	
CIRCLING	2620-1	2680-1	2780-2	2780-2 1/4
	515 (600-1)	575 (600-1)	675 (700-2)	675 (700-2 1/4)

NE-3, 26 DEC 2024 to 23 JAN 2025

NE-3, 26 DEC 2024 to 23 JAN 2025