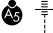


VORTAC PSK <b>116.8</b> Chan <b>115</b>	APP CRS <b>031°</b>	Rwy Idg <b>6201</b> TDZE <b>2105</b> Apt Elev <b>2105</b>
---	------------------------	---

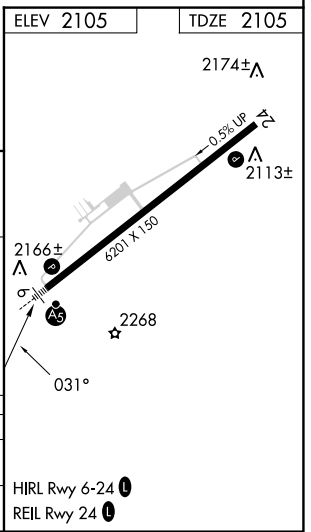
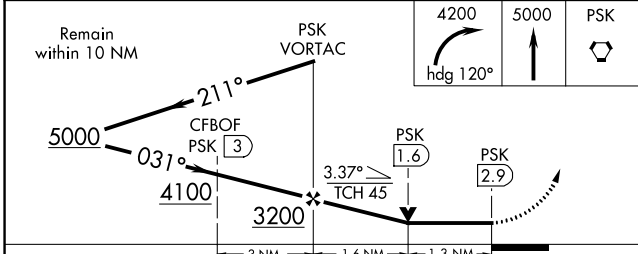
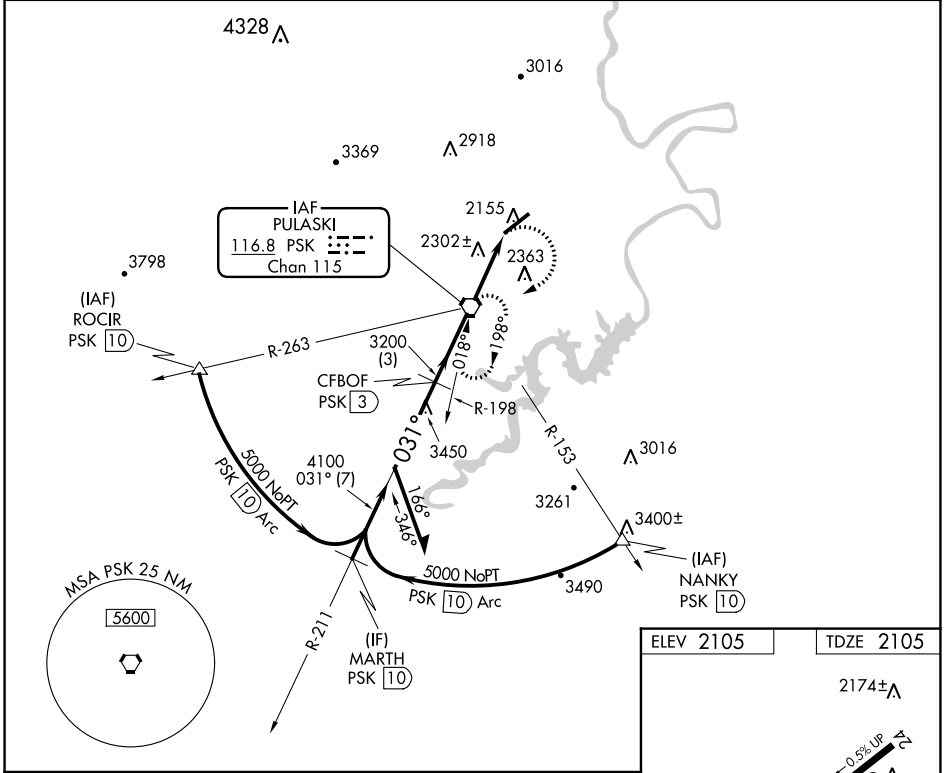
# VOR/DME RWY 6

NEW RIVER VALLEY (PSK)

**⚠** Inoperative table does not apply. Visibility reduction by helicopters NA.  
**⚠** When local altimeter setting not received, use Blacksburg altimeter setting and increase all MDA 40 feet. VDP NA when using Blacksburg altimeter setting. Circling NA for Cat D northwest of Rwy 6-24.

**MALSR**  
  
**MISSED APPROACH:** Climbing right turn to 4200 via heading 120° then climb to 5000 direct PSK VORTAC and hold.

AWOS-3 <b>127.375</b>	ROANOKE APP CON <b>126.0 339.8</b>	ROANOKE CLNC DEL <b>121.7</b>	UNICOM <b>122.7 (CTAF) 0</b>
--------------------------	---------------------------------------	----------------------------------	---------------------------------



CATEGORY	A	B	C	D
S-6	2620-1	515 (600-1)	2620-1½ 515 (600-1½)	2620-1¾ 515 (600-1¾)
CIRCLING	2620-1 515 (600-1)	2680-1 575 (600-1)	2780-2 675 (700-2)	2780-2¼ 675 (700-2¼)

NE-3, 26 DEC 2024 to 23 JAN 2025

NE-3, 26 DEC 2024 to 23 JAN 2025