

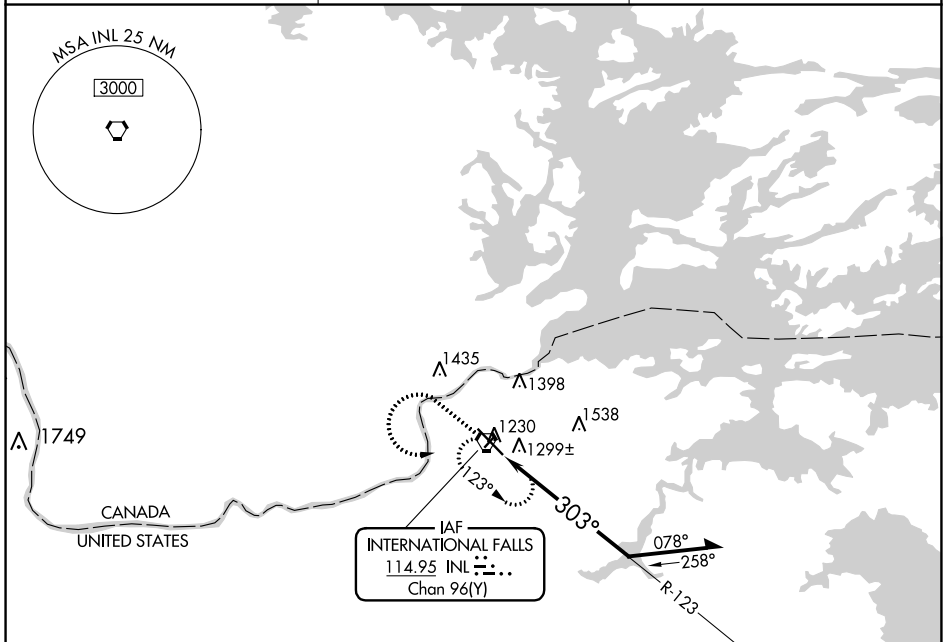
VORTAC INL 114.95 Chan 96(Y)	APP CRS 303°	Rwy Idg TDZE Apt Elev	7400 1174 1182
--	------------------------	-----------------------------	---

VOR RWY 31

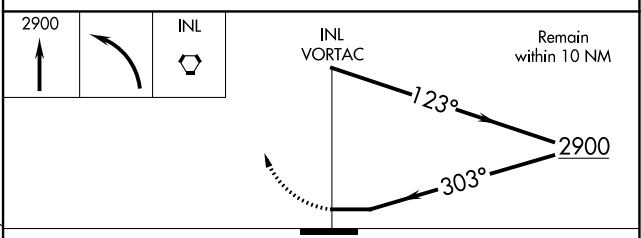
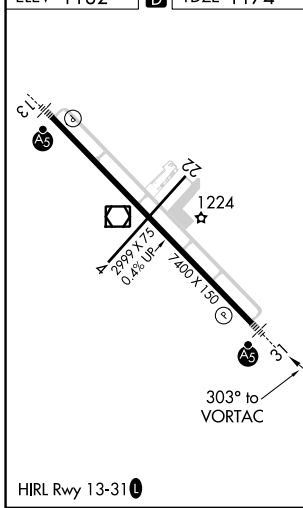
FALLS INTL/EINARSON FLD (INL)

<p>For inop MALS, increase S-31 Cat D visibility to 1/4. Circling to Rwy 4-22 NA at night.</p>	<p>MALS</p>	<p>MISSED APPROACH: Climb to 2900 then left turn direct INL VORTAC and hold.</p>

ASOS 120.0	MINNEAPOLIS CENTER 120.9 377.1	UNICOM 122.8 (CTAF)
----------------------	--	-------------------------------



ELEV 1182		TDZE 1174
-----------	--	-----------



CATEGORY	A	B	C	D
S-31	1600-1/2	426 (500-1/2)	1600-3/4 426 (500-3/4)	1600-1 426 (500-1)
CIRCLING	1620-1 438 (500-1)	1680-1 498 (500-1)	1900-2 718 (800-2)	1900-2 1/4 718 (800-2 1/4)

NC-1, 26 DEC 2024 to 23 JAN 2025

NC-1, 26 DEC 2024 to 23 JAN 2025