

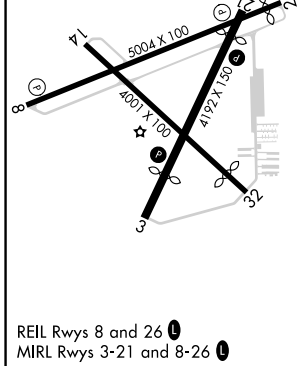
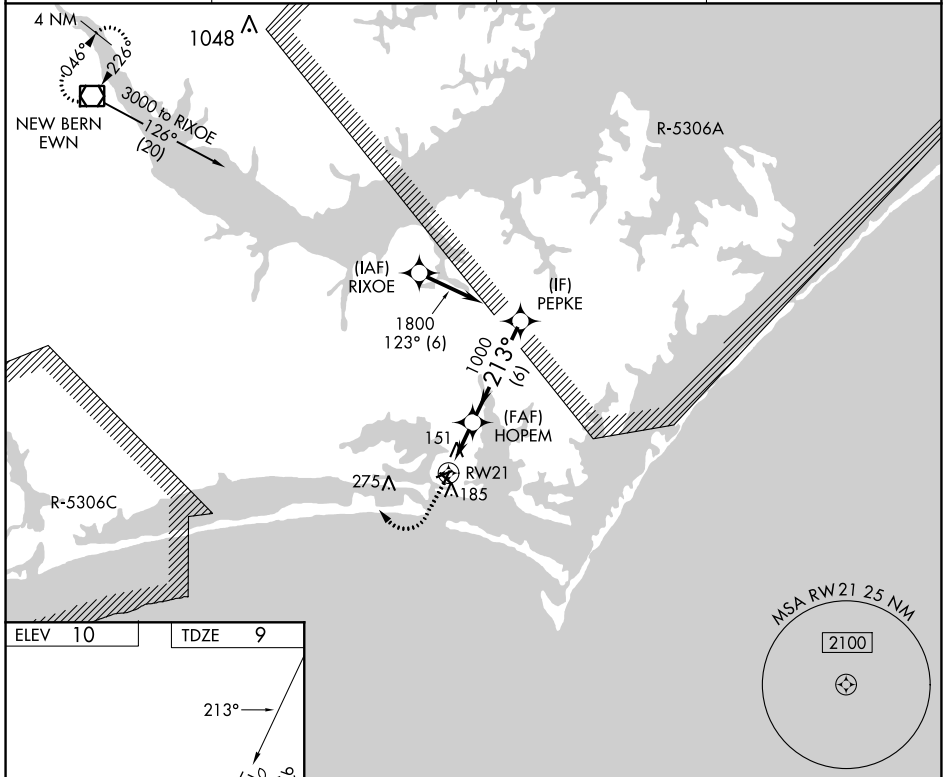
APP CRS	Rwy Idg	3676
213°	TDZE	9
	Apt Elev	10

RNAV (GPS) RWY 21

MICHAEL J SMITH FLD (MR.H)

RNP APCH - GPS.		MISSED APPROACH: Climb to 500 then climbing right turn to 3000 direct EWN VOR/DME and hold.
<p>⚠ Circling Rwy 8, 14, 32 NA at night. Rwy 21 helicopter visibility reduction below 3/4 SM NA. ATC clearance required to penetrate R-5306A and R-5306C.</p>		

ASOS 135.375	CHERRY POINT APP CON 132.575 299.6	CLNC DEL 125.65	UNICOM 122.8 (CTAF) 0
------------------------	--	---------------------------	---------------------------------



500	3000	EWN	VGSI and descent angles not coincident (VGSI Angle 4.00/TCH 54).
<p>↑</p>		<p>↪</p>	<p>◻</p>
<p>0.8 NM to RW21</p>		<p>HOPEM</p>	<p>PEPKE</p>
<p>3.00° TCH 40</p>		<p>1000</p>	<p>1800</p>
<p>0.8</p>		<p>2.2 NM</p>	<p>6 NM</p>
CATEGORY	A	B	C
LNAV MDA	420-1	411 (500-1)	NA
CIRCLING	540-1	530 (600-1)	NA

SE-2, 26 DEC 2024 to 23 JAN 2025

SE-2, 26 DEC 2024 to 23 JAN 2025