

APP CRS	Rwy Idg	3328
033°	TDZE	9
	Apt Elev	10

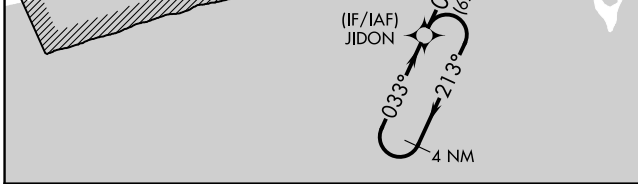
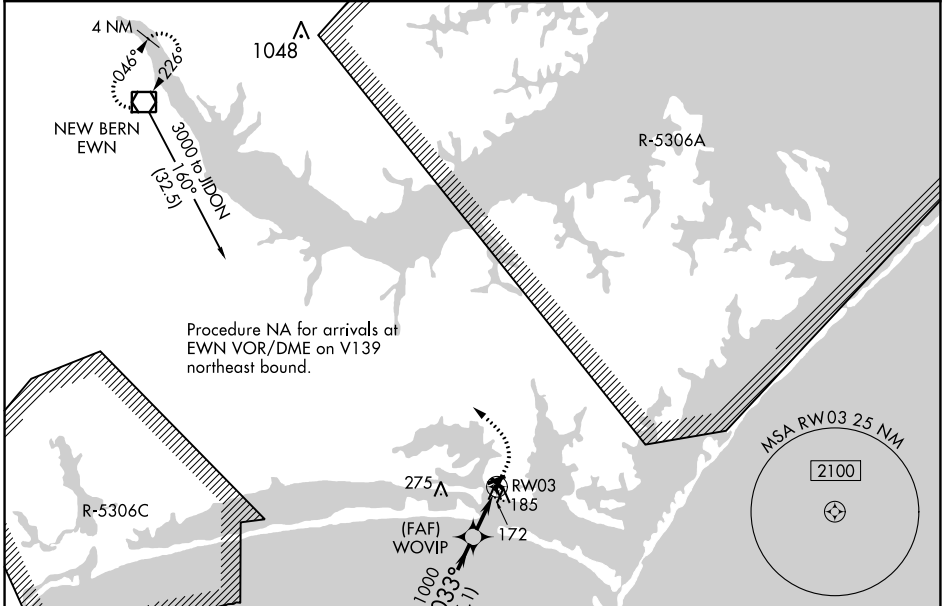
RNAV (GPS) RWY 3

MICHAEL J SMITH FLD (MR.H)

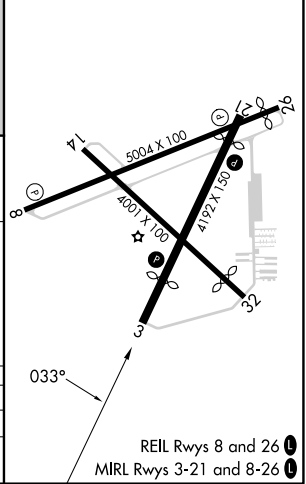
⚠ Circling Rwy 8, 14, 32 NA at night. DME/DME RNP-0.3 NA. ATC clearance required to penetrate R-5306A and R-5306C. When local altimeter setting not received, use Cherry Point MCAS (Cunningham Fld) altimeter setting and increase all MDA 40 feet. Rwy 3 helicopter visibility reduction below 3/4 SM NA. VDP NA when using Cherry Point MCAS (Cunningham Fld) altimeter setting. Rwy 8, 14, 32 helicopter visibility reduction below 1 SM NA.

MISSED APPROACH: Climb to 600 then climbing left turn to 3000 direct EWN VOR/DME and hold.

ASOS 135.375	CHERRY POINT APP CON 132.575 299.6	CLNC DEL 125.65	UNICOM 122.8 (CTAF) 0
------------------------	--	---------------------------	---------------------------------



ELEV 10	TDZE 9
---------	--------



4 NM Holding Pattern	VGSI and descent angles not coincident (VGSI Angle 4.00/TCH 44).	600	3000	EWN
JIDON	WOVIP	1.4 NM to RW03		
1800	213°	033°	1000	3.00° TCH 40
	033°			
	6.1 NM	1.6 NM	1.4 NM	

CATEGORY	A	B	C	D
LNAV MDA	480-1	471 (500-1)		NA
CIRCLING	540-1	530 (600-1)		NA

REIL Rws 8 and 26
MIRL Rws 3-21 and 8-26

SE-2, 26 DEC 2024 to 23 JAN 2025

SE-2, 26 DEC 2024 to 23 JAN 2025