

(UECKR6.UECKR) 24137

UECKR SIX DEPARTURE (RNAV)

AL-5121 (FAA)

BATTEN INTL (RAC)
RACINE, WISCONSIN

ASOS
121.425
CLNC DEL
120.15
MILWAUKEE DEP CON
135.875 317.725



**TOP ALTITUDE:
ASSIGNED BY ATC**

TAKEOFF MINIMUMS

Rwys 4, 14, 22, 32: Standard.

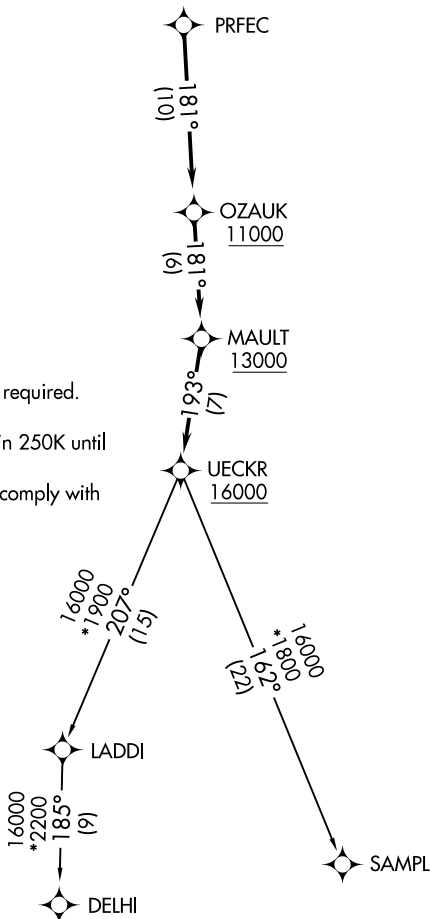
NOTE: RNAV 1.

NOTE: GPS or DME/DME/IRU required.

NOTE: RADAR required.

NOTE: Turbojet aircraft maintain 250K until advised by ATC.

NOTE: Notify ATC if unable to comply with crossing restrictions.



NOTE: Chart not to scale.

DEPARTURE ROUTE DESCRIPTION

Climb on assigned heading for RADAR vectors to PRFEC, thence....

...on track 181° to cross OZAUK at or above 11000, then on track 181° to cross MAULT at or above 13000, then on track 193° to cross UECKR at or above 16000, then on (transition). Maintain ATC assigned altitude, expect filed altitude ten minutes after departure.

DELHI TRANSITION (UECKR6.DELHI)

SAMPL TRANSITION (UECKR6.SAMPL)

UECKR SIX DEPARTURE (RNAV)

(UECKR6.UECKR) 26MAR20

RACINE, WISCONSIN
BATTEN INTL (RAC)

EC-3, 26 DEC 2024 to 23 JAN 2025

EC-3, 26 DEC 2024 to 23 JAN 2025