

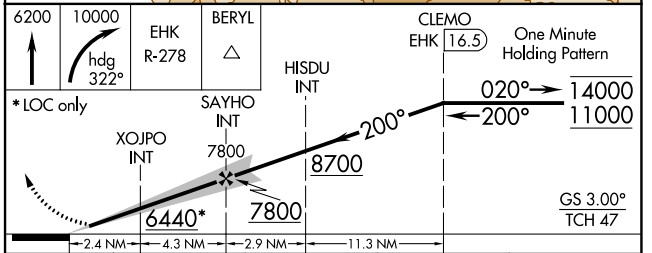
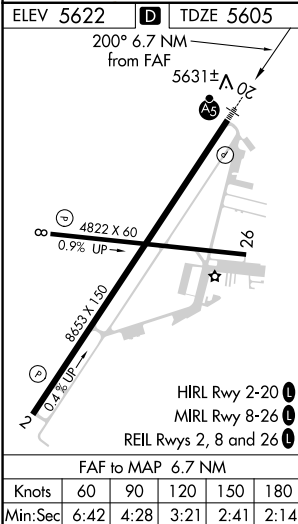
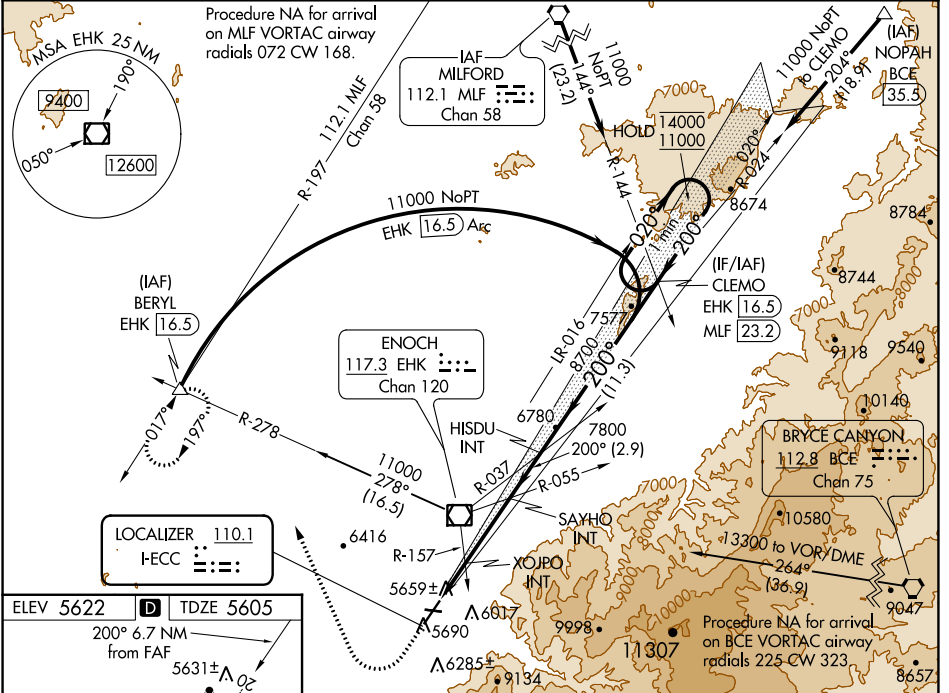
LOC I-ECC <b>110.1</b>	APP CRS <b>200°</b>	Rwy Idg TDZE Apt Elev	<b>8653</b> <b>5605</b> <b>5622</b>
---------------------------	------------------------	-----------------------------	---

# ILS or LOC RWY 20

CEDAR CITY RGNL (CDC)

DME required.		MALSR	MISSED APPROACH: Climb to 6200 then climbing right turn to 10000 on heading 322° and on EHK R-278 to BERYL INT/EHK 16.5 DME and hold, continue climb-in-hold to 10000. † Missed approach requires minimum climb of 210 feet per NM to 7300.
XOJPO fix minimums (Dual VOR receivers required): For inop ALS, increase S-LOC 20 Cats C/D visibility to 1½ SM. For inop ALS, increase S-LOC 20 Cats C/D visibility to 2½ SM. # For inop ALS, increase S-ILS 20 visibility all Cats to 1 SM.			

ASOS <b>119.025</b>	SALT LAKE CITY CENTER <b>125.575 379.275</b>	UNICOM <b>123.0 (CTAF) 0</b>
------------------------	---	---------------------------------



CATEGORY	A	B	C	D
S-ILS 20†		5825-½	220 (300-½)	
S-ILS 20#		5882-½	277 (300-½)	
S-LOC 20	6440-½ 835 (900-½)	6440-¾ 835 (900-¾)	6440-1⅞ 835 (900-1⅞)	
XOJPO FIX MINIMUMS (DUAL VOR RECEIVERS REQUIRED)				
S-LOC 20	6100-½	495 (500-½)	6100-1	495 (500-1)

SW-4, 26 DEC 2024 to 23 JAN 2025

SW-4, 26 DEC 2024 to 23 JAN 2025