

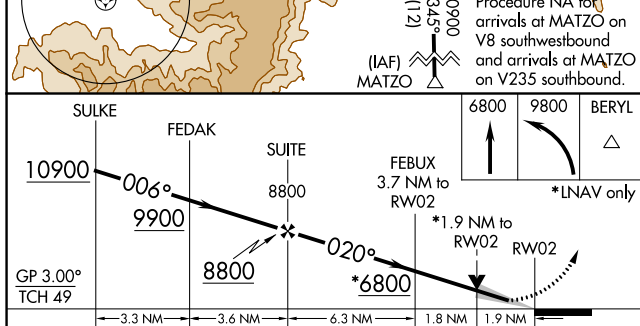
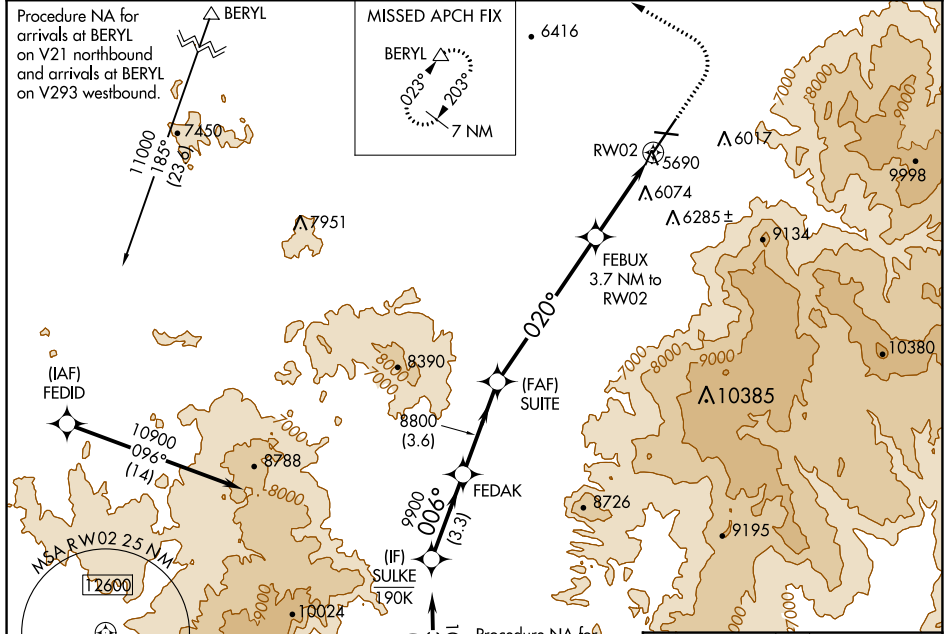
WAAS CH 49143	APP CRS 020°	Rwy Idg TDZE Apt Elev	8653 5592 5622
-------------------------	------------------------	-----------------------------	---

RNAV (GPS) RWY 2

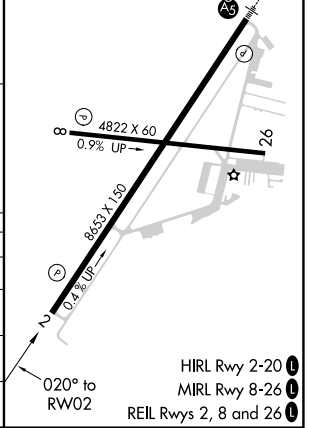
CEDAR CITY RGNL (CDC)

RNP APCH.	MISSED APPROACH: Climb to 6800 then climbing left turn to 9800 direct BERYL and hold.
 Circling NA east of Rwy 2-20. Baro-VNAV NA.	

ASOS 119.025	SALT LAKE CITY CENTER 125.575 379.275	UNICOM 123.0 (CTAF) 0
------------------------	---	---------------------------------



ELEV 5622	TDZE 5592
-----------	-----------



CATEGORY	A	B	C	D
LPV DA	5867-7/8	275 (300-7/8)		
LNAV/VNAV DA	6394-2 1/2	802 (800-2 1/2)		
LNAV MDA	6240-1 648 (700-1)	6240-1 7/8 648 (700-1 7/8)		
CIRCLING	6240-1 618 (700-1)	6240-1 7/8 618 (700-1 7/8)	6240-2 618 (700-2)	

SW-4, 26 DEC 2024 to 23 JAN 2025

SW-4, 26 DEC 2024 to 23 JAN 2025