

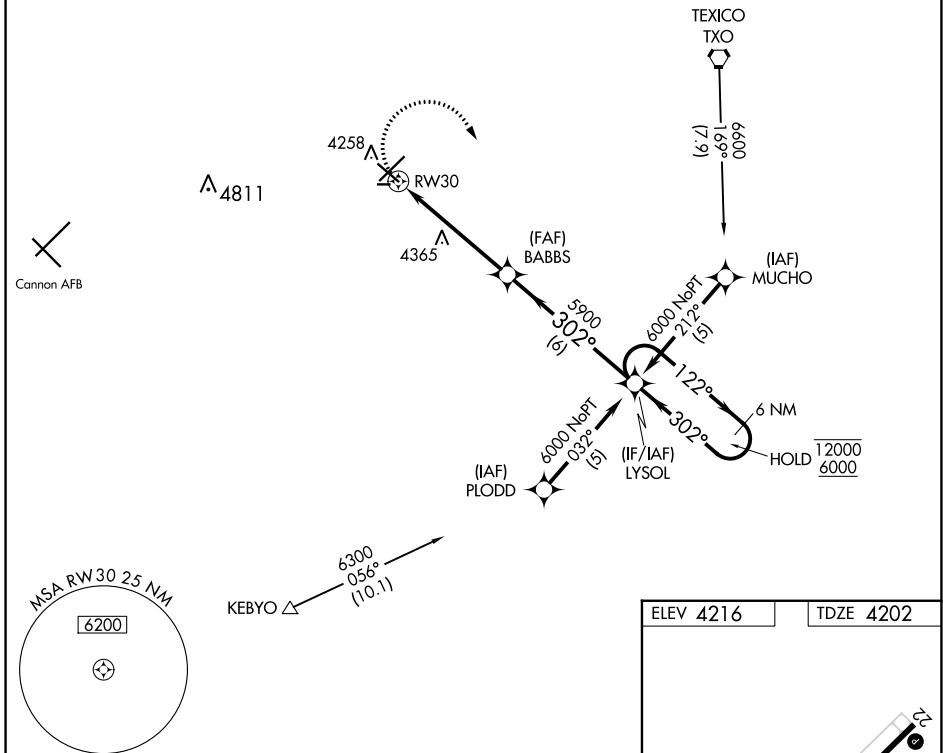
APP CRS <b>302°</b>	Rwy Idg <b>5697</b>
	TDZE <b>4202</b>
	Apt Elev <b>4216</b>

# RNAV (GPS) RWY 30

CLOVIS RGNL (CVN)

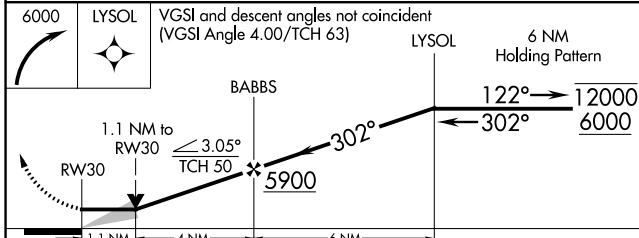
RNP APCH - GPS.		MISSED APPROACH: Climbing right turn to 6000 direct LYSOL and hold.	
CAUTION: Cannon AFB 12 NM WSW, heavy USAF fighter traffic. Circling NA to Rwys 8 and 26.			
AWOS-3PT <b>135.375</b>	CANNON APP CON <b>118.425 352.1</b>	CLNC DEL <b>119.0</b>	UNICOM <b>122.8 (CTAF) ①</b>

Procedure NA for arrivals at TXO VORTAC via V62 northwest bound.



SW-1, 26 DEC 2024 to 23 JAN 2025

SW-1, 26 DEC 2024 to 23 JAN 2025



ELEV 4216	TDZE 4202
-----------	-----------

REIL Rwys 12 and 30 ①  
MIRL Rwys 4-22 and 12-30 ①

CATEGORY	A	B	C	D
LNVA MDA	4620-1	418 (500-1)	4620-1¼	418 (500-1¼)
CIRCLING	4680-1	464 (500-1)	4700-1½ 484 (500-1½)	4820-2 604 (700-2)