

WAAS CH <b>73014</b> <b>W03A</b>	APP CRS <b>034°</b>	Rwy Idg TDZE <b>624</b> Apt Elev <b>625</b>	<b>5999</b>
--	------------------------	---	-------------

# RNAV (GPS) RWY 3

MENOMINEE RGNL (MNM)

RNP APCH.

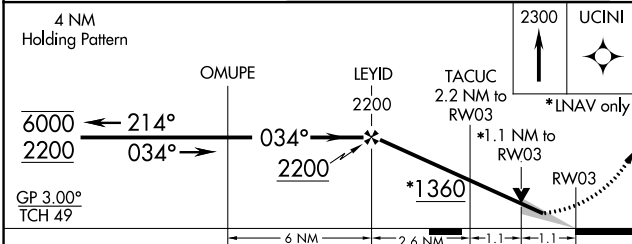
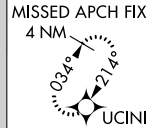
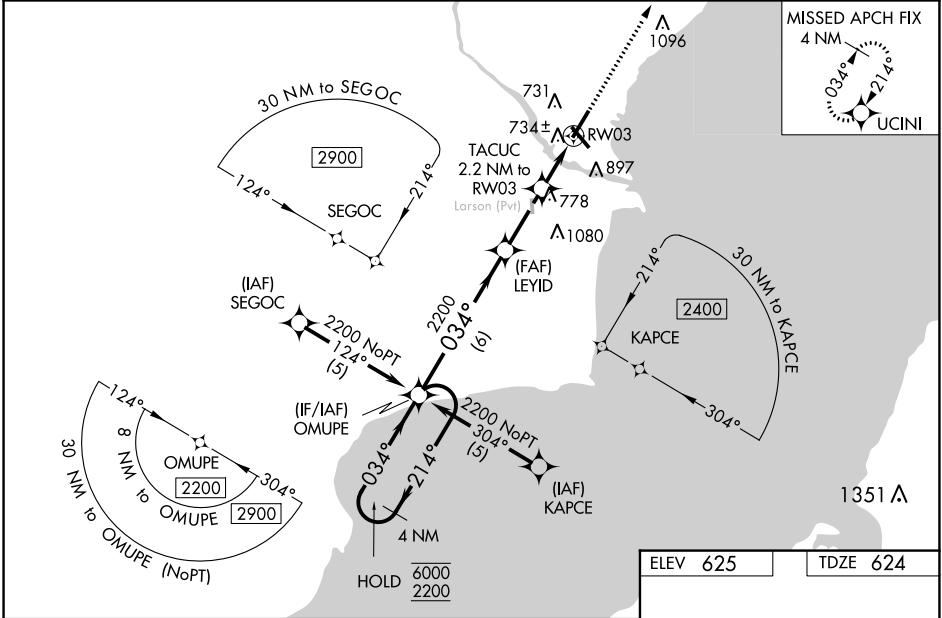
**⚠** Circling Rwy 14, 32 NA at night. Baro-VNAV and VDP NA when using Sturgeon Bay altimeter setting. For uncompensated Baro-VNAV systems, LNAV/VNAV NA below -16°C or above 54°C. When local altimeter setting not received, use Sturgeon Bay altimeter setting and increase all DA/MDA 60 feet, increase Circling Cat C/D visibility ½ SM. For inop MALSRL when using Sturgeon Bay altimeter setting increase LNAV MDA visibility Cat C/D to 1¾. Inop table does not apply to LPV and LNAV/VNAV all Cats and LNAV MDA Cats A/B.

MALSRL

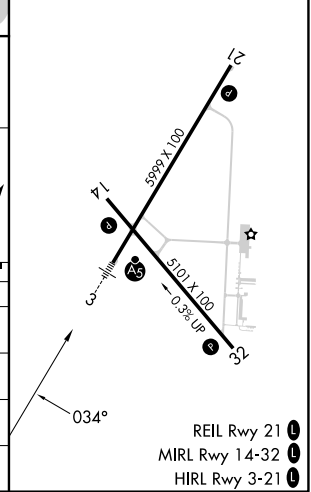


**MISSED APPROACH:**  
Climb to 2300 direct UCINI and hold.

AWOS-3PT <b>121.45</b>	GREEN BAY APP CON ★ <b>120.3 338.2</b>	UNICOM <b>122.8 (CTAF)</b> <b>Ⓛ</b>
---------------------------	---	--



ELEV 625	TDZE 624
----------	----------



CATEGORY	A	B	C	D
LPV DA		824-1	200 (200-1)	
LNNAV/VNAV DA		1150-1½	526 (600-1½)	
LNNAV MDA		1000-1	376 (400-1)	
<b>C</b> CIRCLING	1200-1	575 (600-1)	1200-1½ 575 (600-1½)	1380-2½ 755 (800-2½)