

|  |                        |   |
|--|------------------------|---|
| WAAS<br>CH <b>65840</b><br><b>W32A</b> | APP CRS<br><b>318°</b> | Rwy Idg <b>3034</b><br>TDZE <b>49</b><br>Apt Elev <b>49</b> |
|--|------------------------|---|

# RNAV (GPS) RWY 32

COLUSA COUNTY (008)

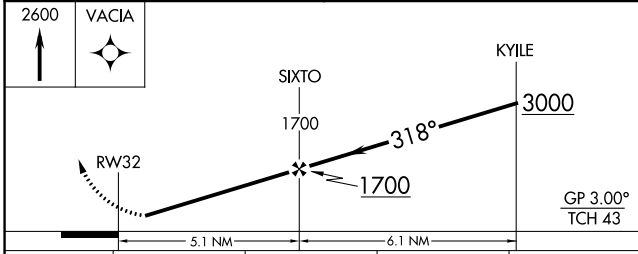
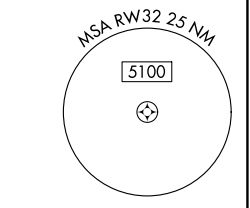
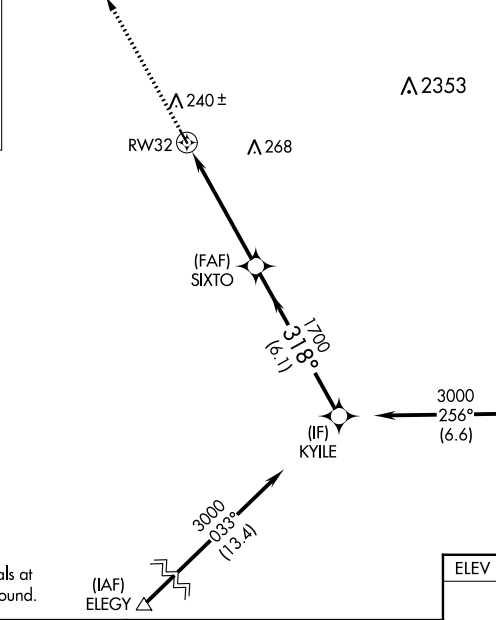
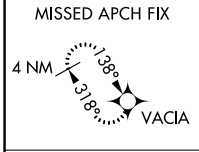
RNP APCH - GPS.

**NA** Baro-VNAV NA when using Sacramento Intl altimeter setting. Rwy 32 helicopter visibility reduction below 1 SM NA. For uncompensated Baro-VNAV systems, LNAV/VNAV NA below -15°C or above 54°C. Procedure NA at night. Obtain local altimeter setting on CTAF; when not received, use Sacramento Intl altimeter setting: increase LPV DA to 381 feet, increase LNAV/VNAV DA to 551 feet and all visibilities ¼ SM; increase all MDAs 100 feet and LNAV Cat C visibility ¼ SM and Circling Cat C visibility ½ SM.

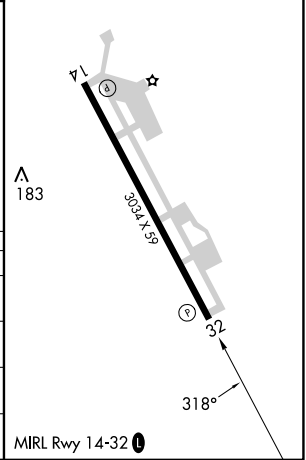
MISSED APPROACH: Climb to 2600 direct VACIA and hold.

OAKLAND CENTER  
**132.2 350.3**

UNICOM  
**122.8 (CTAF) 0**



|         |         |
|---------|---------|
| ELEV 49 | TDZE 49 |
|---------|---------|



| CATEGORY          | A      | B            | C                      | D  |
|-------------------|--------|--------------|------------------------|----|
| LPV DA            | 299-1  | 250 (300-1)  |                        | NA |
| LNAV/VNAV DA      | 469-1½ | 420 (500-1½) |                        | NA |
| LNAV MDA          | 520-1  | 471 (500-1)  | 520-1¾<br>471 (500-1¾) | NA |
| <b>C</b> CIRCLING | 600-1  | 551 (600-1)  | 620-1½<br>571 (600-1½) | NA |

SW-2, 26 DEC 2024 to 23 JAN 2025

SW-2, 26 DEC 2024 to 23 JAN 2025