


| | | |
|--|------------------------|---|
| VOR/DME SWO 108.4 Chan 21 | APP CRS 178° | Rwy Idg 7401 TDZE 1000 Apt Elev 1000 |
|--|------------------------|---|

VOR RWY 17

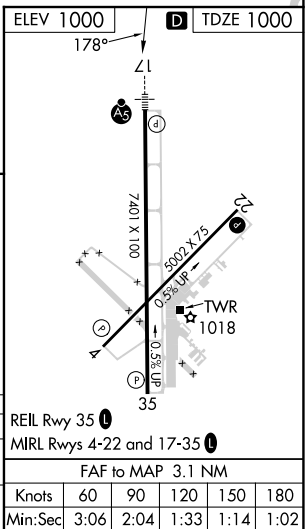
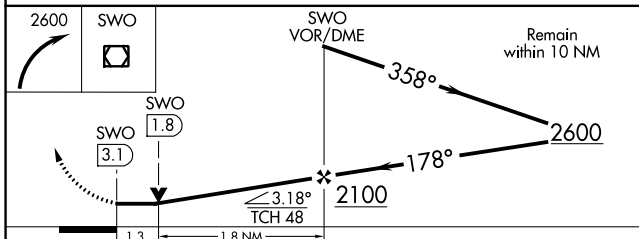
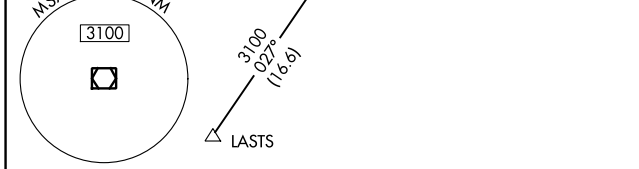
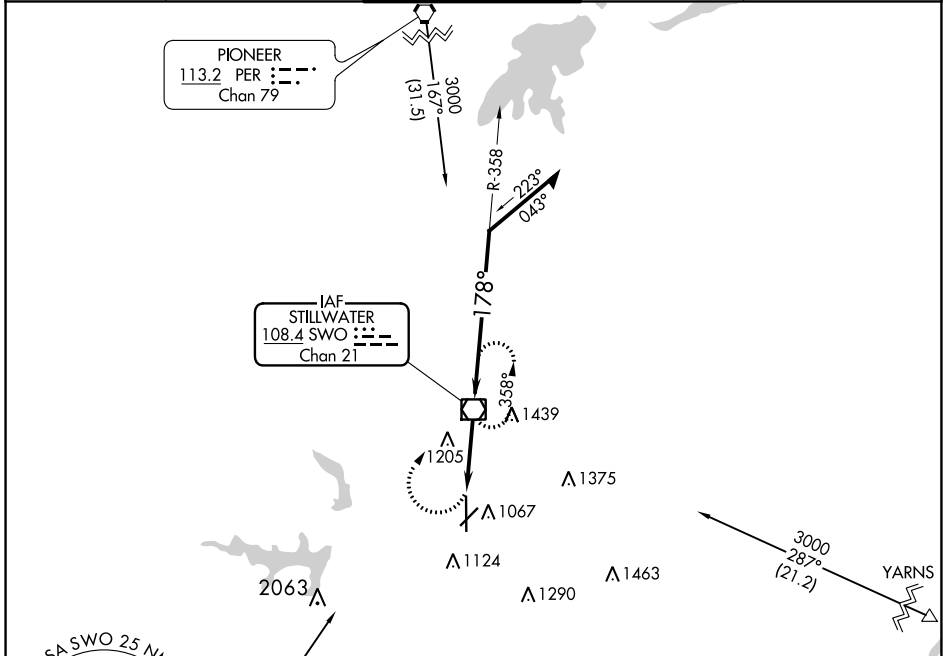
STILLWATER RGNL (SWO)


⚠ When local altimeter setting not received, use Ponca City Rgnl altimeter setting and increase all MDA 80 feet and Circling Cat D visibility ½ mile. VDP NA with Ponca City altimeter setting. For inop MALSRS increase S-17 Cats A/B visibility to 1 mile. Helicopter visibility reduction below ¾ SM NA.



MALSRS 

MISSED APPROACH: Climbing right turn to 2600 direct SWO VOR/DME and hold.

| | | | | |
|------------------------|--|--|-------------------------|-------------------------|
| ASOS 135.725 | KANSAS CITY CENTER 127.8 319.1 | STILLWATER TOWER ★ 125.35 (CTAF) 0 | GND CON 121.6 | UNICOM 122.95 |
|------------------------|--|--|-------------------------|-------------------------|



| CATEGORY | A | B | C | D |
|--|--------------------|----------------------|---|----------------------|
| S-17 | 1460-¾ 460 (500-¾) | | | 1460-1 460 (500-1) |
|  CIRCLING | 1460-1 460 (500-1) | 1520-1½ 520 (600-1½) | | 1740-2¼ 740 (800-2¼) |

| | | | | | |
|---|------|------|------|------|------|
| REIL Rwy 35  | | | | | |
| MIRL Rwy 4-22 and 17-35  | | | | | |
| FAF to MAP 3.1 NM | | | | | |
| Knots | 60 | 90 | 120 | 150 | 180 |
| Min:Sec | 3:06 | 2:04 | 1:33 | 1:14 | 1:02 |

SC-1, 26 DEC 2024 to 23 JAN 2025

SC-1, 26 DEC 2024 to 23 JAN 2025