

WAAS CH 50440 W33A	APP CRS 325°	Rwy Idg 5001 TDZE 41 Apt Elev 47
--	------------------------	---

RNAV (GPS) RWY 33R

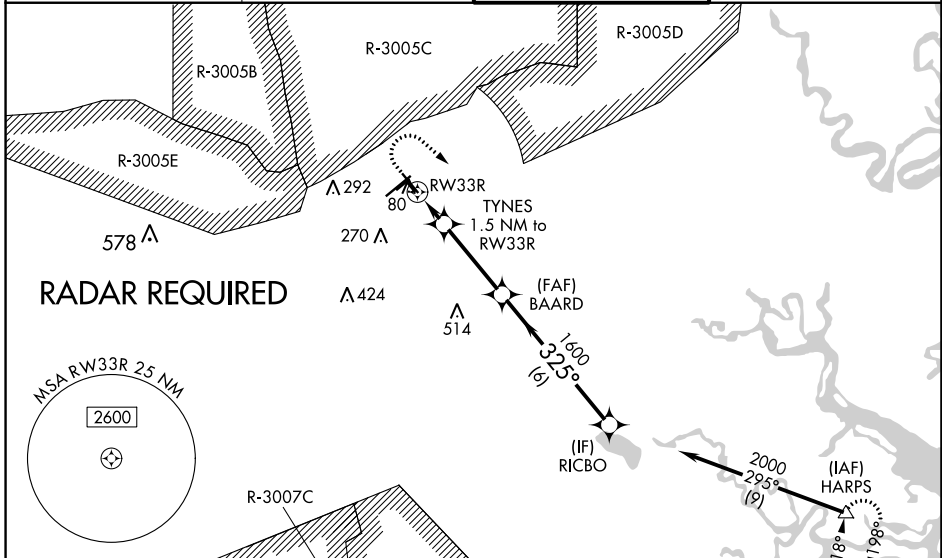
WRIGHT AAF (FORT STEWART)/MIDCOAST RGNL (LHW)

RNP APCH.

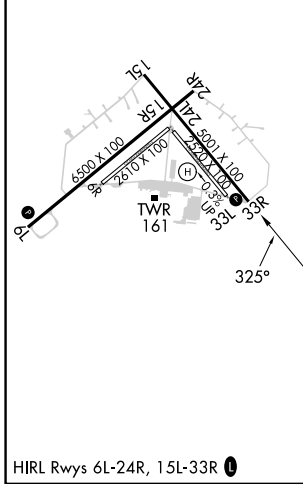
⚠ Circling to Rwy 6R, 24L, 15R, 33L, 6L, 24R NA at night. For uncompensated Baro-VNAV systems, LNAV/VNAV NA below -6°C or above 54°C. When local altimeter setting not received, use Savannah/Hilton Head Intl altimeter setting: increase LPV DA to 346 feet, LNAV/VNAV DA to 379 feet and all visibilities 1/8 mile; increase all MDAs 60 feet and LNAV and Circling Cats C and D visibility 1/4 mile. Baro-VNAV NA when using Savannah Hilton Head Intl altimeter. Circling NA northeast of Rwy 15L-33R. Procedure NA when R-3005C/D or R-3007C is active and LHW Tower is closed.

MISSED APPROACH: Climb to 500 then climbing right turn to 4000 direct HARPS and hold.

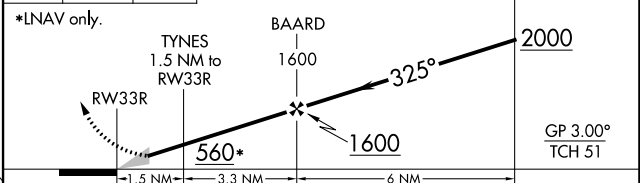
ATIS ★ 118.475	SAVANNAH APP CON★ 120.4 353.775	WRIGHT TOWER ★ 126.25 (CTAF) 0 269.275	GND CON 121.7 273.575
--------------------------	---	--	---------------------------------



ELEV 47	TDZE 41
---------	---------



500	4000	HARPS	VGSI and descent angles not coincident (VGSI Angle 3.00/TCH 65).
-----	------	-------	--



CATEGORY	A	B	C	D
LPV DA		291-1	250 (300-1)	
LNAV/VNAV DA		324-1	283 (300-1)	
LNAV MDA		420-1	379 (400-1)	
C CIRCLING	560-1 513 (600-1)	620-1 573 (600-1)	680-1 3/4 633 (700-1 3/4)	680-2 633 (700-2)

SE-4, 26 DEC 2024 to 23 JAN 2025

SE-4, 26 DEC 2024 to 23 JAN 2025