

LOC/DME I-GFK 109.1 Chan 28	APP CRS 174°	Rwy Idg TDZE Apt Elev	7351 843 845
---	------------------------	-----------------------------	---

LOC BC RWY 17R

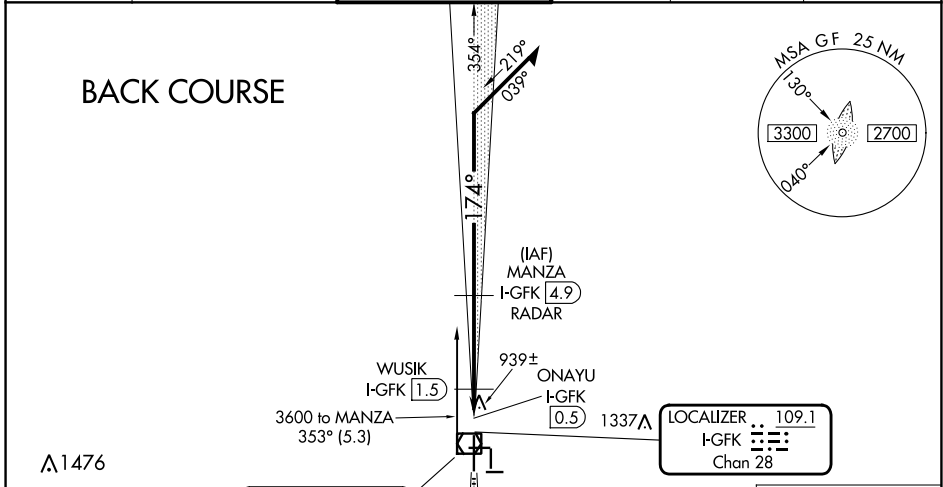
GRAND FORKS INTL (GFK)

DME or ADF or RADAR required.

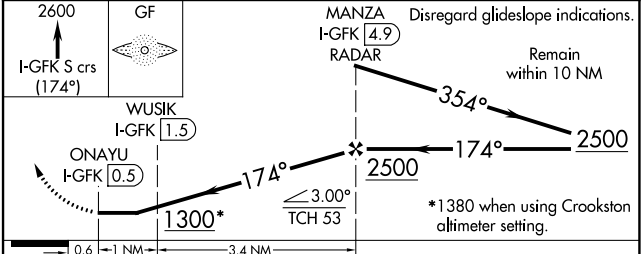
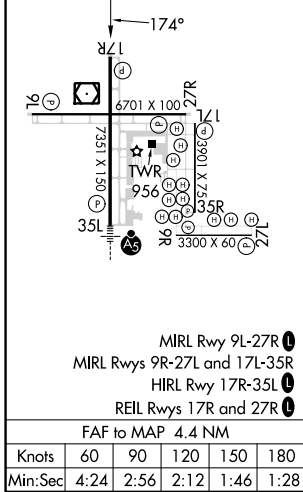
⚠ When local altimeter setting not received, use Crookston altimeter setting and increase all MDA 80 feet; increase S-17R Cat C visibility 1/8 SM and Circling Cat C visibility 1/4 SM. Increase WUSIK fix minimums S-17R Cat C visibility and Circling Cat C visibility 1/4 SM.

MISSED APPROACH: Climb to 2600 on I-GFK south course (174°) to HISER LOM/I-GFK 6.9 DME/RADAR and hold.

ATIS 119.4	GRAND FORKS APP CON * 118.1 318.1	GRAND FORKS TOWER * 118.4 (CTAF) 350.35	GND CON 124.575	CLNC DEL 135.725	UNICOM 122.95
----------------------	---	---	---------------------------	----------------------------	-------------------------



ELEV 845 TDZE 843	GRAND FORKS 114.3 GFK Chan 90	MISSED APCH FIX HISER I-GFK 6.9 RADAR GF 345
-------------------	-------------------------------	---



CATEGORY	A	B	C	D
S-17R	1300-1	457 (500-1)	1300-1 3/8 457 (500-1 3/8)	1300-1 1/2 457 (500-1 1/2)
CIRCLING	1300-1	455 (500-1)	1400-1 1/2 555 (600-1 1/2)	1420-2 575 (600-2)
WUSIK FIX MINIMUMS				
S-17R	1200-1 357 (400-1)			1200-1 1/4 357 (400-1 1/4)
CIRCLING	1260-1 415 (500-1)	1300-1 455 (500-1)	1400-1 1/2 555 (500-1 1/2)	1420-2 575 (600-2)

NC-1, 26 DEC 2024 to 23 JAN 2025

NC-1, 26 DEC 2024 to 23 JAN 2025