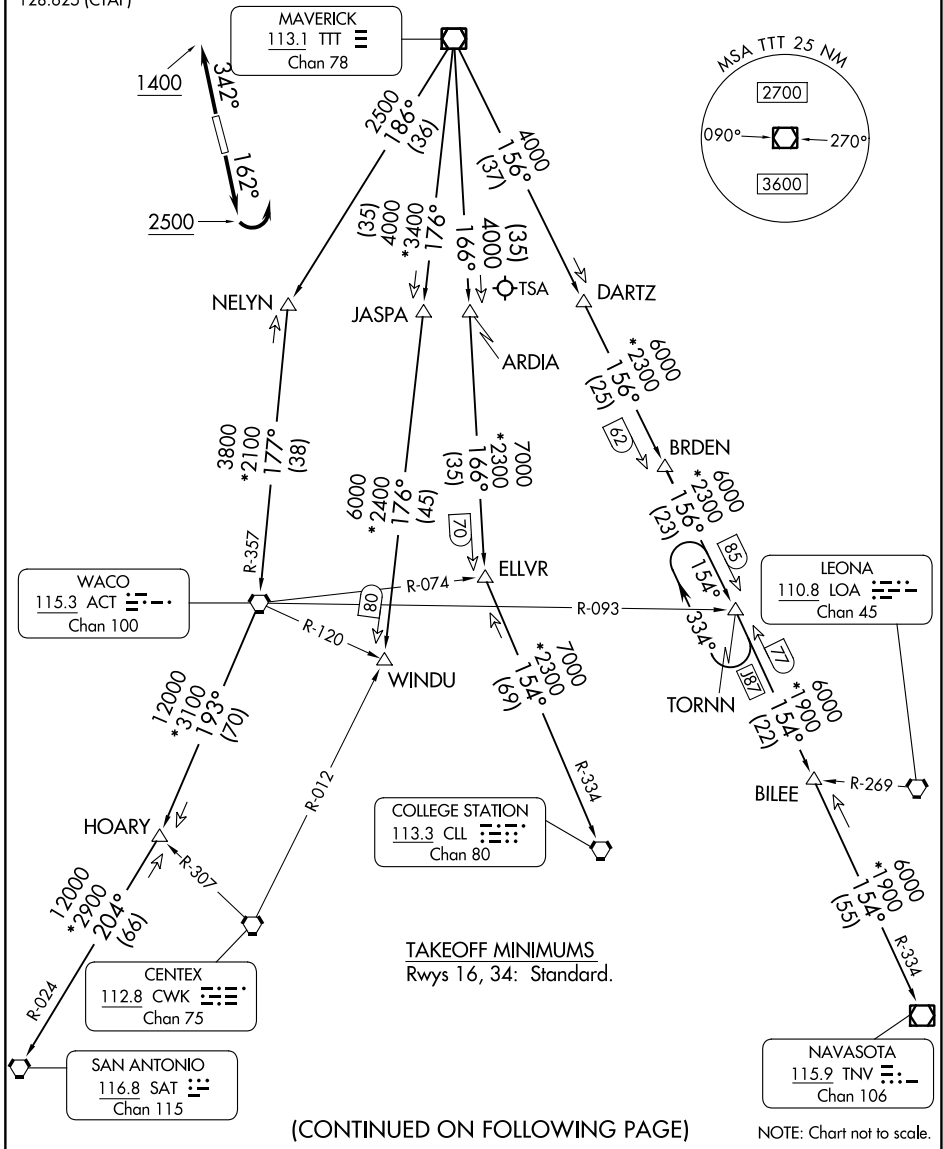


# JOE POOL SEVEN DEPARTURE

LONE STAR DEP CON  
135.975 379.9  
CLNC DEL  
121.875  
CLNC DEL (when twr closed)  
118.85  
GND CON  
121.875  
ARLINGTON TOWER ★  
128.625 (CTAF)

RADAR and DME required.

**TOP ALTITUDE:  
ASSIGNED BY ATC**



SC-2, 26 DEC 2024 to 23 JAN 2025

SC-2, 26 DEC 2024 to 23 JAN 2025

# JOE POOL SEVEN DEPARTURE