

| | | | |
|--|------------------------|---|-------------|
| WAAS CH 72711 W13A | APP CRS 133° | Rwy Idg TDZE 1115 Apt Elev 1119 | 6504 |
|--|------------------------|---|-------------|

RNAV (GPS) RWY 13

THIEF RIVER FALLS RGNL (TVF)

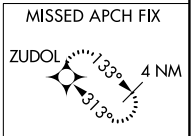
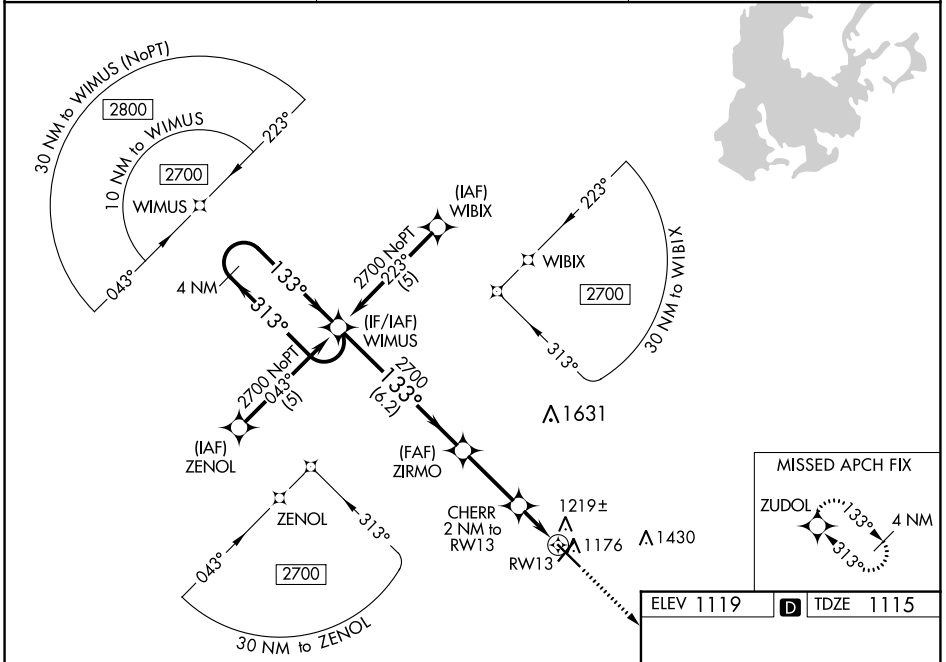
⚠ Baro-VNAV and VDP NA when using Crookston altimeter setting. For uncompensated Baro-VNAV systems, LNAV/VNAV NA below -17°C (2°F) or above 54°C (130°F). DME/DME RNP-0.3 NA.
⚠ When local altimeter setting not received, use Crookston altimeter setting: increase LPV DA to 1447 feet and all visibilities ½ SM; increase LNAV/VNAV DA to 1518 feet and all visibilities ¼ SM; increase all MDAs 100 feet and visibility Cats C and D ¾ SM.

MISSED APPROACH:
Climb to 2700 direct
ZUDOL and hold.

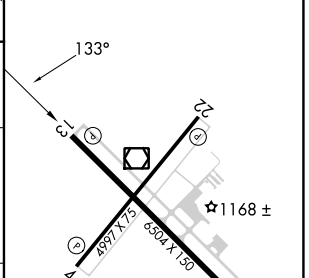
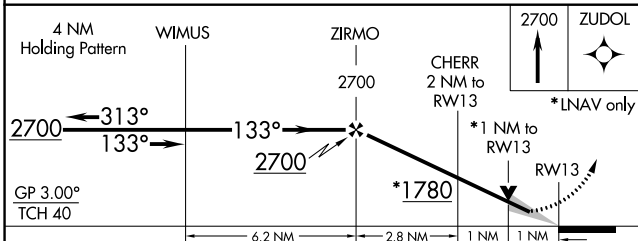
AWOS-3PT
119.025

MINNEAPOLIS CENTER
132.15 269.6

UNICOM
122.8 (CTAF) ①



ELEV 1119 **D** TDZE 1115



| CATEGORY | A | B | C | D |
|-------------------|-----------------------|-----------------------|-----------------------|--|
| LPV DA | 1365-1 | | 250 (300-1) | |
| LNAV/VNAV DA | 1436-1¼ | | 321 (400-1¼) | |
| LNAV MDA | 1480-1 | | 365 (400-1) | |
| C CIRCLING | 1540-1 421 (500-1) | 1580-1 461 (500-1) | 1820-2 701 (800-2) | 1480-1¼ 365 (400-1¼) 1980-2¾ 861 (900-2¾) |

HIRL Rwy 13-31 **①**
MRL Rwy 4-22 **①**
REIL Rws 4, 13 and 22 **①**

NC-1, 26 DEC 2024 to 23 JAN 2025

NC-1, 26 DEC 2024 to 23 JAN 2025