

| | | | |
|--|------------------------|-----------------------------|---|
| WAAS CH 69311 W31A | APP CRS 313° | Rwy Idg TDZE Apt Elev | 6304 1114 1119 |
|--|------------------------|-----------------------------|---|

RNAV (GPS) RWY 31

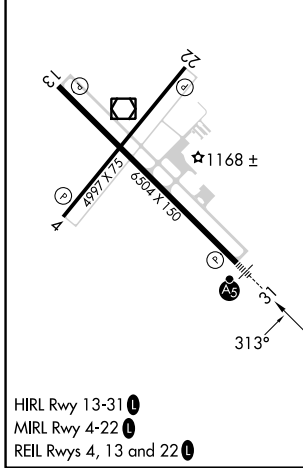
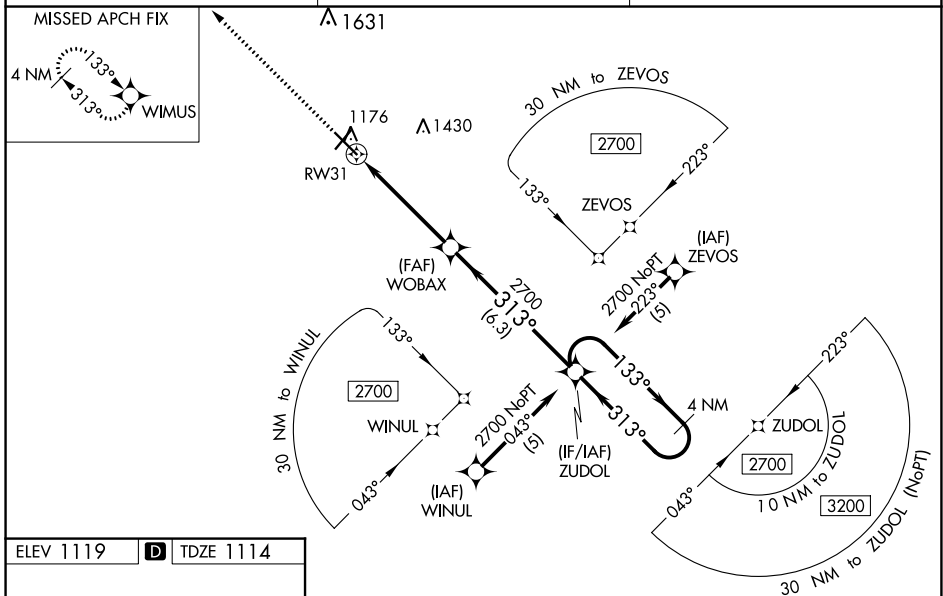
THIEF RIVER FALLS RGNL (TVF)

⚠ Baro-VNAV and VDP NA when using Crockston altimeter setting. For uncompensated Baro-VNAV systems, LNAV/VNAV NA below -17°C (2°F) or above 54°C (130°F). DME/DME RNP-0.3 NA. When local altimeter setting not received, use Crockston altimeter setting: increase LPV DA to 1446 feet and all visibilities ½ SM; increase LNAV/VNAV DA to 1510 feet and all visibilities ¾ SM; increase all MDAs 100 feet and visibility Cats C and D ¼ SM. For inoperative MALS, increase LNAV Cats C/D visibility to 1½ mile. For inoperative MALS, when using Crockston altimeter setting, increase LPV all Cats visibility to 1½ mile, LNAV/VNAV all Cats visibility to 1¼ mile, LNAV Cats C/D visibility to 1½ mile.



MISSED APPROACH:
Climb to 2700 direct WIMUS and hold.

| | | |
|----------------------------|---|-------------------------------|
| AWOS-3PT 119.025 | MINNEAPOLIS CENTER 132.15 269.6 | UNICOM 122.8 (CTAF) |
|----------------------------|---|-------------------------------|



| 2700 | WIMUS | WOBAX | ZUDOL | 4 NM Holding Pattern |
|-------------------|--------------------|--------|--|----------------------|
| ↑ | ✧ | 2700 | 2700 | 2700 |
| *LNAV only | *1.3 NM to RW31 | 1.3 NM | 3.5 NM | 6.3 NM |
| | | 133° | 313° | 2700 |
| | | 2700 | ← 313° | GP 3.00° |
| | | | | TCH 55 |
| CATEGORY | A | B | C | D |
| LPV DA | 1364-½ | | 250 (300-½) | |
| LNAV/VNAV DA | 1428-½ | | 314 (400-½) | |
| LNAV MDA | 1580-½ | | 1580-1 466 (500-1) | |
| C CIRCLING | 1580-1 461 (500-1) | | 1820-2 701 (800-2) 1980-2 ¾ 861 (900-2¾) | |

NC-1, 26 DEC 2024 to 23 JAN 2025

NC-1, 26 DEC 2024 to 23 JAN 2025