

LOC/DME I-ANE <b>111.15</b> Chan <b>48 (Y)</b>	APP CRS <b>269°</b>	Rwy Idg <b>5000</b> TDZE <b>910</b> Apt Elev <b>912</b>
------------------------------------------------------	------------------------	---------------------------------------------------------------

# ILS or LOC RWY 27

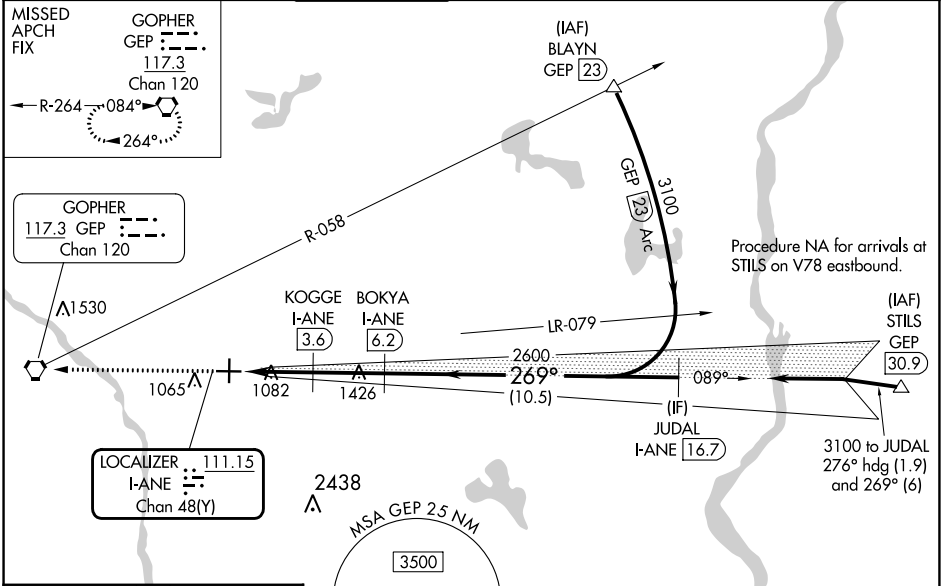
ANOKA COUNTY/BLAINE (JANES FLD) (ANE)

DME required. RADAR required for procedure entry at BLAYN.

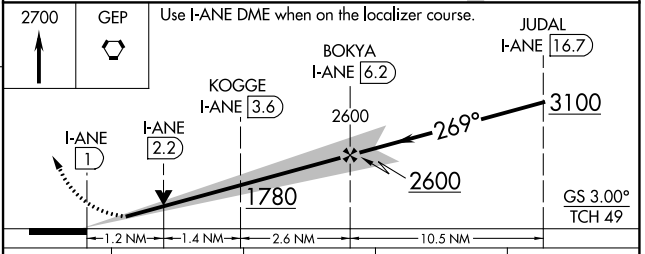
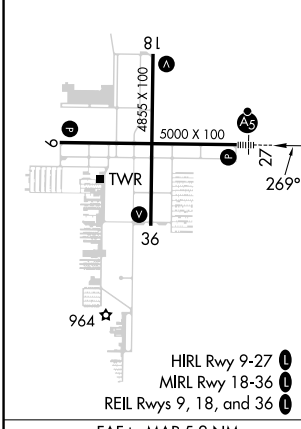
**⚠** YDP NA when using Crystal altimeter setting. When local altimeter setting not received, use Crystal altimeter setting and increase S-ILS 27 DA to 1131 feet; increase all MDAs 40 feet and S-LOC 27 visibility Cat C/D ¼ SM, and Circling visibility Cat D ¼ SM. For inop ALS when using Crystal altimeter setting, increase S-LOC 27 Cat C/D visibility to 1 ¾ SM.

MALSR MISSED APPROACH: Climb to 2700 direct GEP VORTAC and hold, continue climb-in-hold to 2700.

ATIS <b>120.625</b>	MINNEAPOLIS APP CON <b>126.5 335.65</b>	ANOKA TOWER* <b>132.4 (CTAF) 0</b>	GND CON <b>121.85</b>	CLNC DEL <b>121.3</b>	CLNC DEL <b>121.85</b> (When twr closed)	UNICOM <b>122.95</b>
------------------------	--------------------------------------------	---------------------------------------	--------------------------	--------------------------	------------------------------------------------	-------------------------



ELEV <b>912</b>	TDZE <b>910</b>
-----------------	-----------------



CATEGORY	A	B	C	D
S-ILS 27	1110-½ 200 (200-½)			
S-LOC 27	1340-½	430 (500-½)	1340-¾	430 (500-¾)
<b>CIRCLING</b>	1400-1	488 (500-1)	1420-1½	1580-2
			508 (600-1½)	668 (700-2)

NC-1, 26 DEC 2024 to 23 JAN 2025

NC-1, 26 DEC 2024 to 23 JAN 2025