

| | | | |
|--|------------------------|-----------------------------|---|
| WAAS CH 70624 W26A | APP CRS 259° | Rwy Idg TDZE Apt Elev | 4151 1005 1014 |
|--|------------------------|-----------------------------|---|

RNAV (GPS) RWY 26L

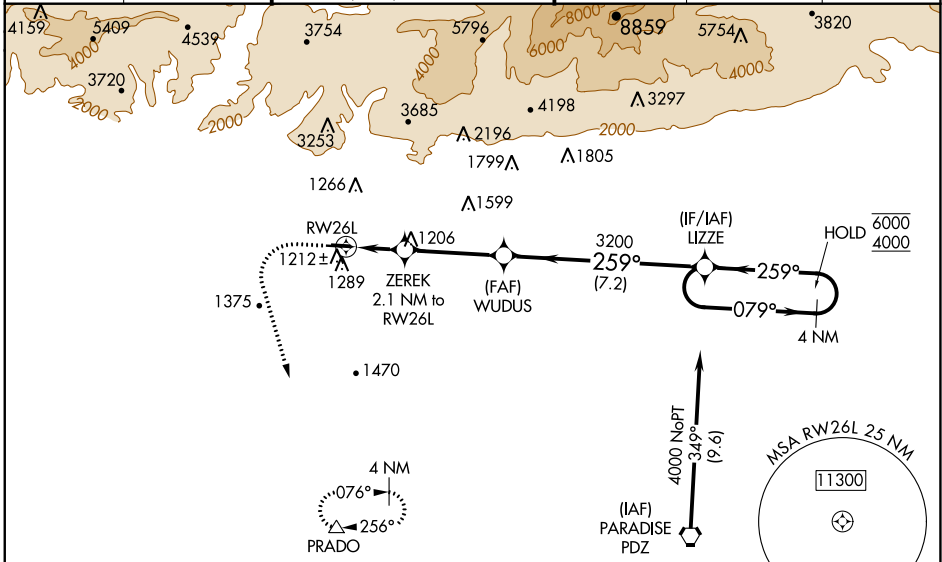
BRACKETT FLD (POC)

RNP APCH.

⚠ Baro-VNAV and VDP NA when using Ontario altimeter setting. Rwy 26L helicopter visibility reduction below 3/4 SM NA. For uncompensated Baro-VNAV systems, LNAV/VNAV NA below -17°C or above 54°C. When local altimeter setting not received, use Ontario Intl altimeter setting and increase all DA 32 feet and all MDA 40 feet, increase LPV and LNAV/VNAV all Cats visibility 1/8 SM. Circling NA for Cat C north of Rwy 8L-26R. Circling to Rwy 8L NA at night. When Circling to Rwy 8R at night, operational VGSi required, remain on or above VGSi glidepath until threshold.

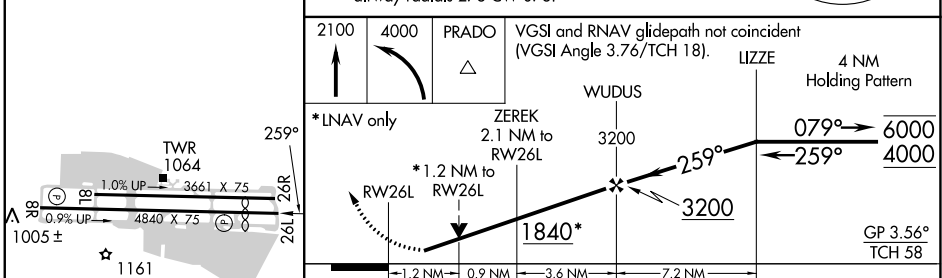
⚠ MISSED APPROACH: Climb to 2100 then climbing left turn to 4000 direct PRADO and hold.

| | | | | | | |
|----------------------|-------------------------------------|--|----------------------------|-------------------------|----------------------------|-------------------------|
| ATIS 124.4 | SOCAL APP CON 125.5 349.0 | BRACKETT TOWER★ RWY 8R/26L 118.2 (CTAF) | RWY 8L/26R 133.3 | GND CON 125.0 | CLNC DEL 121.875 | UNICOM 122.95 |
|----------------------|-------------------------------------|--|----------------------------|-------------------------|----------------------------|-------------------------|



| | |
|-----------|-----------|
| ELEV 1014 | TDZE 1005 |
|-----------|-----------|

Procedure NA for arrivals on PDZ VORTAC airway radials 278 CW 078.



| CATEGORY | A | B | C | D |
|-----------------|------------|-----------------|-------------------------------|----|
| LPV DA | 1305-7/8 | 300 (300-7/8) | | NA |
| LNAV/VNAV DA | 1444-1 1/4 | 439 (500-1 1/4) | | NA |
| LNAV MDA | 1500-1 | 495 (500-1) | 1500-1 3/8 495 (500-1 3/8) | NA |
| CIRCLING | 1680-1 | 666 (700-1) | 1760-2 1/4 746 (800-2 1/4) | NA |

REIL Rwy 8R and 26L
MIRL Rwy 8R-26L

SW-3, 26 DEC 2024 to 23 JAN 2025

SW-3, 26 DEC 2024 to 23 JAN 2025