

VORTAC POM 110.4 Chan 41	APP CRS 344°	Rwy Idg TDZE Apt Elev N/A N/A 1014
---------------------------------------	------------------------	--

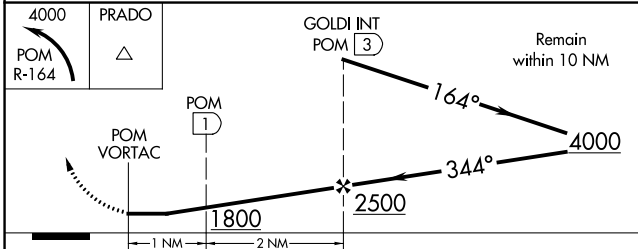
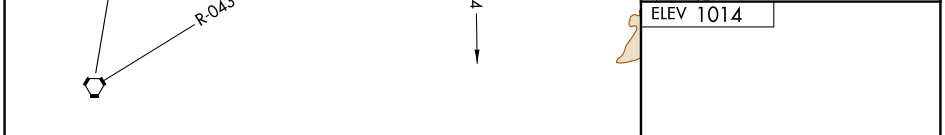
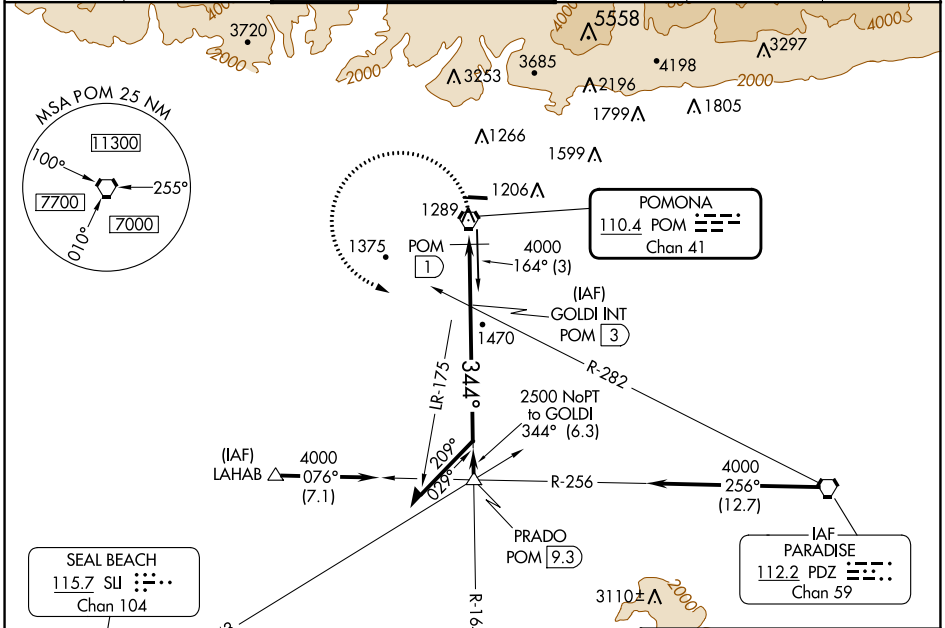
VOR or GPS-A

BRACKETT FLD (POC)

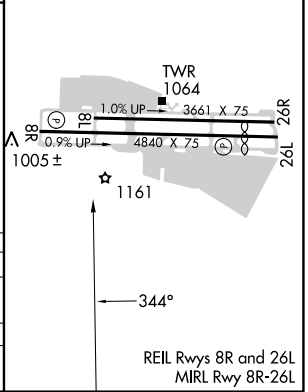
⚠ When local altimeter setting not received, use Ontario Intl altimeter setting and increase all MDA 40 feet and visibility Cat C ¼ mile. Night landing: Rwy 8L NA, Rwy 8R operational VGSi required, remain on or above VGSi glidepath until threshold. Helicopter visibility reduction below 1 SM not authorized. Circling NA for Cat C north of Rwy 8L-26R

MISSED APPROACH: Climbing left turn to 4000 via POM R-164 to PRADO INT.

ATIS 124.4	SOCAL APP CON 125.5 349.0	BRACKETT TOWER* RWY 8R/26L 118.2 (CTAF)	RWY 8L/26R 133.3	GND CON 125.0	CLNC DEL 121.875	UNICOM 122.95
----------------------	-------------------------------------	--	----------------------------	-------------------------	----------------------------	-------------------------



CATEGORY	A	B	C	D
C CIRCLING	1800-1 786 (800-1)	1800-1¼ 786 (800-1¼)	1800-2¼ 786 (800-2¼)	NA
DME MINIMUMS				
C CIRCLING	1680-1 666 (700-1)		1760-2¼ 746 (800-2¼)	NA



SW-3, 26 DEC 2024 to 23 JAN 2025

SW-3, 26 DEC 2024 to 23 JAN 2025