

(LINSE1.LINSE) 24193

AL-5222 (FAA)

MARTIN STATE (MTN)

BALTIMORE, MARYLAND

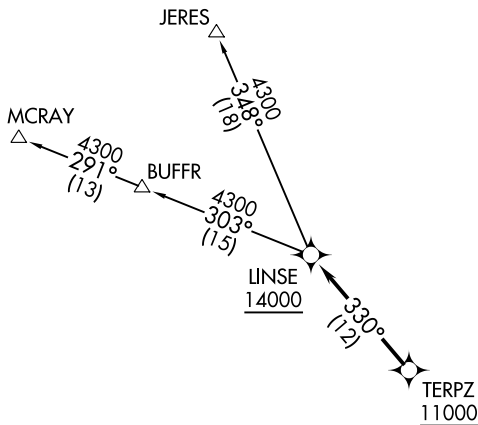
LINSE ONE DEPARTURE (RNAV)

POTOMAC DEP CON
 119.0 282.275
 ATIS
 124.925
 GND CON
 121.8 253.4
 MARTIN TOWER ★
 121.3 254.425

RNAV 1 - DME/DME/IRU or GPS.

RADAR required.

TOP ALTITUDE:
16000

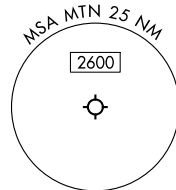


NOTE: Jet aircraft only.

TAKEOFF MINIMUMS:

Rwy 15: Standard.

Rwy 33: Standard with minimum climb of 215'/NM to 1300.



NOTE: Chart not to scale.

NE-3, 26 DEC 2024 to 23 JAN 2025

NE-3, 26 DEC 2024 to 23 JAN 2025



DEPARTURE ROUTE DESCRIPTION

Climb on assigned heading for RADAR vectors to cross TERPZ at or above 11000, thence....

....then on track 330° to cross LINSE at or above 14000. Then on assigned transition. Maintain 16000, expect filed altitude 10 minutes after departure.

JERES TRANSITION (LINSE1.JERES)

MCRAY TRANSITION (LINSE1.MCRAY)

LINSE ONE DEPARTURE (RNAV)

(LINSE1.LINSE) 11JUL24

BALTIMORE, MARYLAND
MARTIN STATE (MTN)