

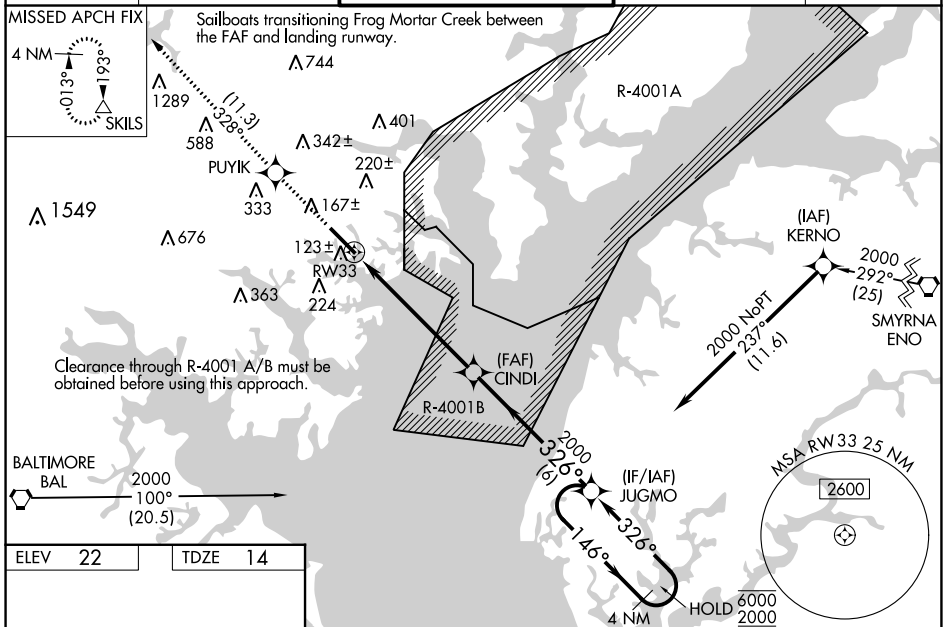
WAAS CH 40307 W33A	APP CRS 326°	Rwy ldg 6997 TDZE 14 Apt Elev 22
--	------------------------	---

RNAV (GPS) RWY 33

MARTIN STATE (MTN)

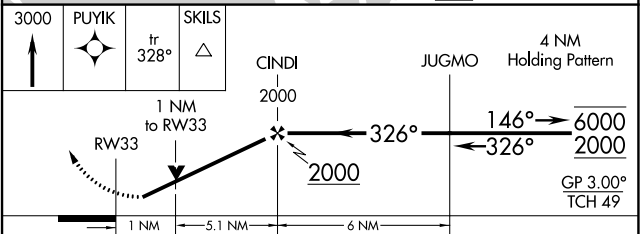
RNP APCH - GPS.		<p>⚠ Circling NA for Cat D northeast of Rwy 15-33. Baro-VNAV and VDP NA when using Baltimore/Washington Intl Thurgood Marshall altimeter setting. Rwy 33 helicopter visibility reduction below ¼ SM NA. For uncompensated Baro-VNAV systems, LNAV/VNAV NA below -15°C or above 54°C. When local altimeter setting not received, use Baltimore/Washington Intl Thurgood Marshall altimeter setting; increase LPV DA to 266 feet; increase LNAV/VNAV DA to 356 feet and all visibilities ½ SM; increase all MDAs 60 feet and LNAV visibility Cat C/D ¼ SM, and Circling visibility Cat C/D ¼ SM.</p>	<p>MISSED APPROACH: Climb to 3000 direct PUYIK and on track 328° to SKILS and hold.</p>

ATIS 124.925	POTOMAC APP CON 119.0 282.275	MARTIN TOWER ★ 121.3 (CTAF) 0 254.425	GND CON 121.8 253.4	UNICOM 122.95
------------------------	---	---	-------------------------------	-------------------------



ELEV 22	TDZE 14
---------	---------

HIRL Rwy 15-33 **Ⓛ**
REIL Rwy 15 and 33 **Ⓛ**
Rwy 33 ldg 8100' (Military Operations Only)
Rwy 15 take-off 8100' (Military Operations Only)



CATEGORY	A	B	C	D
LPV DA		214-1	200 (200-1)	
LNAV/VNAV DA		304-1	290 (300-1)	
LNAV MDA		380-1	366 (400-1)	
Ⓛ CIRCLING	540-1	518 (600-1)	580-1½ 558 (600-1½)	740-2¼ 718 (800-2¼)

NE-3, 26 DEC 2024 to 23 JAN 2025

NE-3, 26 DEC 2024 to 23 JAN 2025