

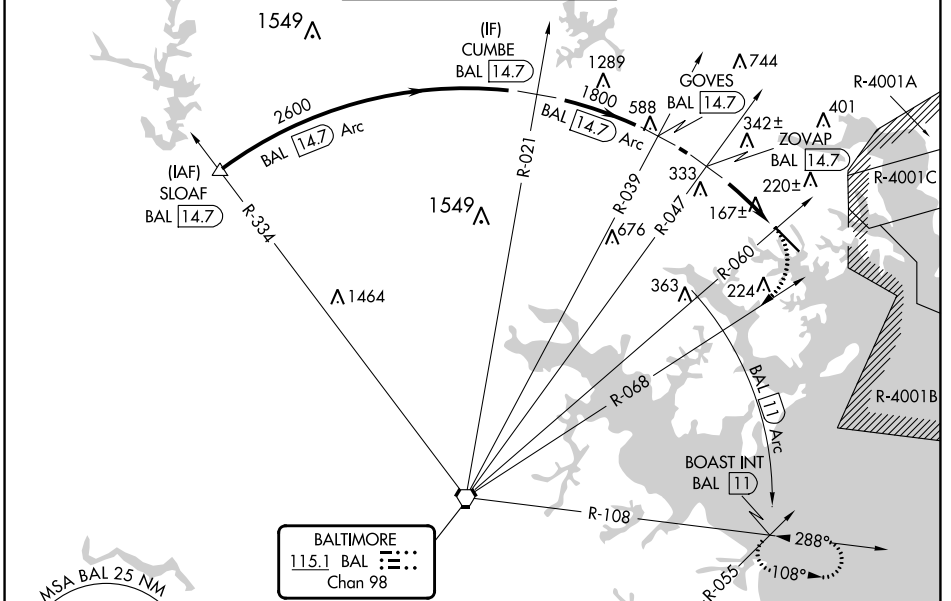
VORTAC BAL 115.1 Chan 98	BAL 14.7 Arc	Rwy Idg 6997 TDZE 22 Apt Elev 22
--	---------------------------	---

VOR or TACAN RWY 15

MARTIN STATE (MTN)

DME required.	MISSED APPROACH: Climbing right turn to 2500 on BAL VORTAC R-068 and BAL 11 DME Arc clockwise to BOAST INT/BAL 11 DME and hold.
<p>▼ Rwy 15 helicopter visibility reduction below 3/4 SM NA. When local altimeter setting not received, use Baltimore/Washington Intl Thurgood Marshall altimeter setting and increase all MDA 60 feet, and increase S-15 Cat B visibility 1/4 SM, Cat C/D 1/2 SM and Circling Cats B/C 1/4 SM. Circling NA northeast of Rwy 15-33.</p> <p>▲</p>	

ATIS 124.925	POTOMAC APP CON 119.0 282.275	MARTIN TOWER ★ 121.3(CTAF) 254.425	GND CON 121.8 253.4	UNICOM 122.95
------------------------	---	--	-------------------------------	-------------------------



NE-3, 26 DEC 2024 to 23 JAN 2025

NE-3, 26 DEC 2024 to 23 JAN 2025



SLOAF BAL 14.7	CUMBE BAL 14.7	GOVES BAL 14.7	2500 BAL 11 Arc CW	BOAST INT
2600	2600	1800	ZOVAP BAL 14.7	BAL R-060 14.7
2600		1260		

ELEV 22	TDZE 22
Rwy 33 Idg 8100' (Military Operations only)	
Rwy 15 take-off 8100' (Military Operations only)	
HIRL Rwy 15-33	
REIL Rws 15 and 33	

CATEGORY	A	B	C	D
S-15	920-1 1/4	898 (900-1 1/4)	920-2 1/2	898 (900-2 1/2)
CIRCLING	920-1 1/4	898 (900-1 1/4)	920-2 3/4 898 (900-2 3/4)	920-3 898 (900-3)