

VORTAC OSH 116.75 Chan 114 (Y)	APP CRS 346°	Rwy Idg TDZE 795 Apt Elev 808	5941
--	------------------------	---	-------------

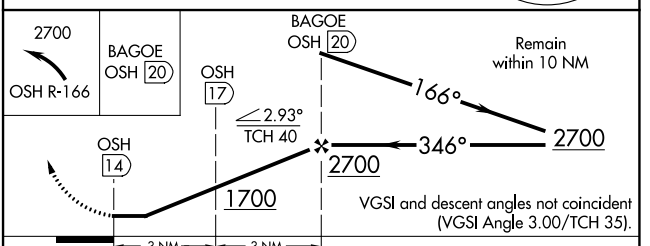
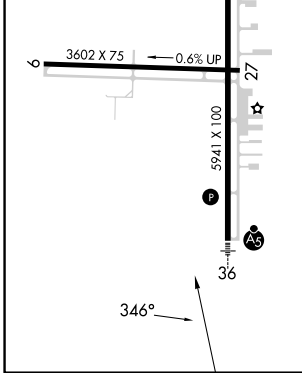
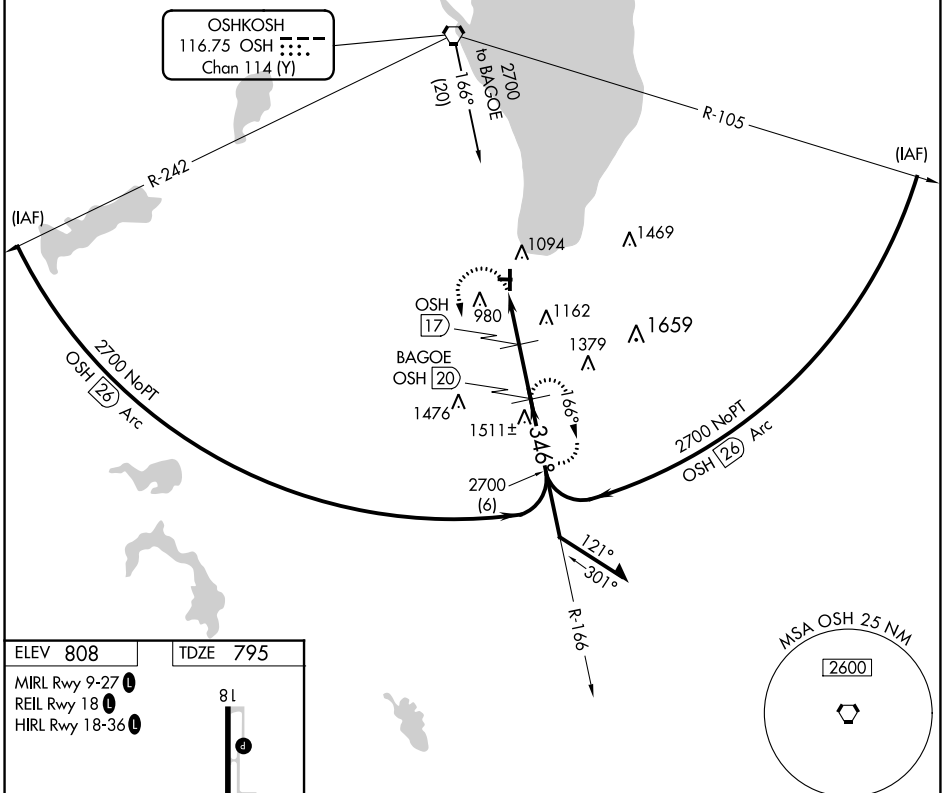
VOR/DME RWY 36

FOND DU LAC COUNTY (F.L.D.)

⚠ Rwy 36 helicopter visibility reduction below $\frac{3}{4}$ SM NA. Circling Rwy 9, 27 NA at night. For inop ALS when using Oshkosh altimeter setting, increase S-36 Cat A/B visibility to 1 SM, and Cat C/D to $1\frac{1}{2}$ SM. For inop ALS, increase S-36 Cat A/B visibility to 1 SM, Cat C/D to $1\frac{1}{2}$ SM. When local altimeter setting not received, use Oshkosh altimeter setting and increase all MDAs 40 feet and visibility S-36 Cat C $\frac{1}{8}$ SM and Circling Cat C/D $\frac{1}{4}$ SM.

MALS MISSED APPROACH: Climbing left turn to 2700 on OSH R-166 to BAGOE/20 DME and hold.

ASOS 134.0	MILWAUKEE APP CON 127.0 263.075	UNICOM 123.05 (CTAF) 0
----------------------	---	----------------------------------



CATEGORY	A	B	C	D
S-36	1420- $\frac{3}{4}$ 625 (700- $\frac{3}{4}$)		1420- $1\frac{1}{8}$ 625 (700- $1\frac{1}{8}$)	1420- $1\frac{1}{2}$ 625 (700- $1\frac{1}{2}$)
C CIRCLING	1420-1 612 (700-1)		1520-2 712 (800-2)	1520- $2\frac{1}{4}$ 712 (800- $2\frac{1}{4}$)

EC-3, 26 DEC 2024 to 23 JAN 2025

EC-3, 26 DEC 2024 to 23 JAN 2025