

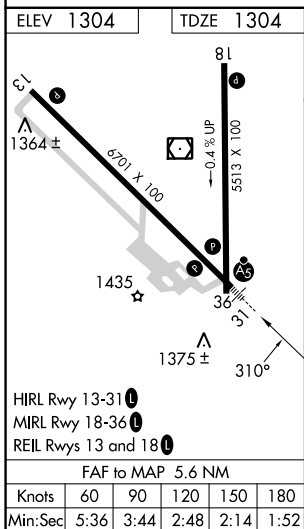
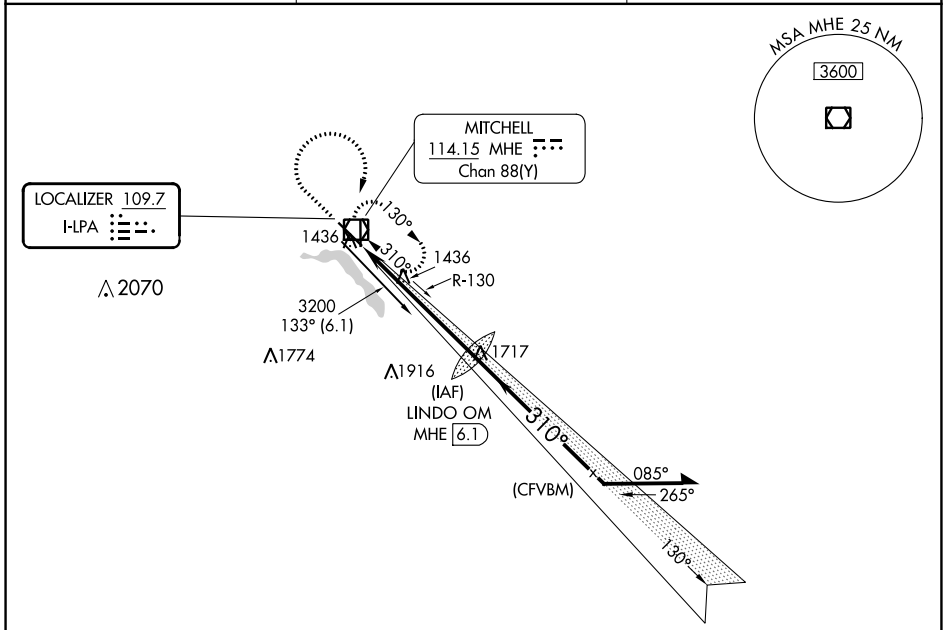
LOC I-LPA 109.7	APP CRS 310°	Rwy Idg TDZE Apt Elev	6701 1304 1304
---------------------------	------------------------	-----------------------------	---

ILS or LOC RWY 31

MITCHELL MUNI (MHE)

DME required.	MALSR	MISSED APPROACH: Climb to 3200 then right turn direct MHE VOR/DME and hold.
Autopilot coupled approach NA below 2174 MSL. For inop ALS, increase S-LOC 31 Cats C and D visibility to 1 1/8 SM.		

ASOS 124.175	MINNEAPOLIS CENTER 126.25 339.8	UNICOM 122.8 (CTAF) 0
------------------------	---	---------------------------------



3200	MHE	LINDO OM MHE 6.1	VGSI and ILS glidepath not coincident (VGSI Angle 3.00/TCH 61)	
*LOC only.			Remain within 10 NM	
			3182	3200
			310°	3200
			1.30°	3200
			1.1 NM	4.5 NM
CATEGORY	A	B	C	D
S-ILS 31	1554-1/2		250 (300-1/2)	
S-LOC 31	1700-1/2	396 (400-1/2)	1700-3/4	396 (400-3/4)
CIRCLING	1740-1 436 (500-1)	1760-1 456 (500-1)	1820-1 1/2 516 (600-1 1/2)	1860-2 556 (600-2)

GS 3.00° TCH 57

NC-1, 26 DEC 2024 to 23 JAN 2025

NC-1, 26 DEC 2024 to 23 JAN 2025