

VOR/DME MHE <b>114.15</b> Chan <b>88</b> (Y)	APP CRS <b>117°</b>	Rwy Idg TDZE Apt Elev	<b>6701</b> <b>1301</b> <b>1304</b>
--	------------------------	-----------------------------	---

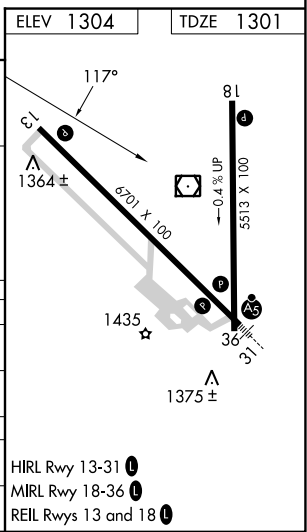
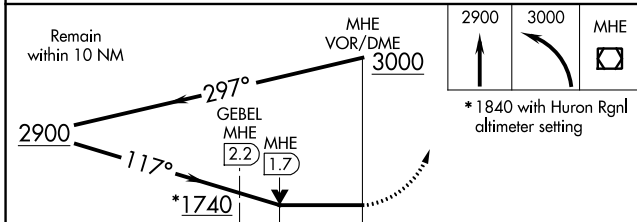
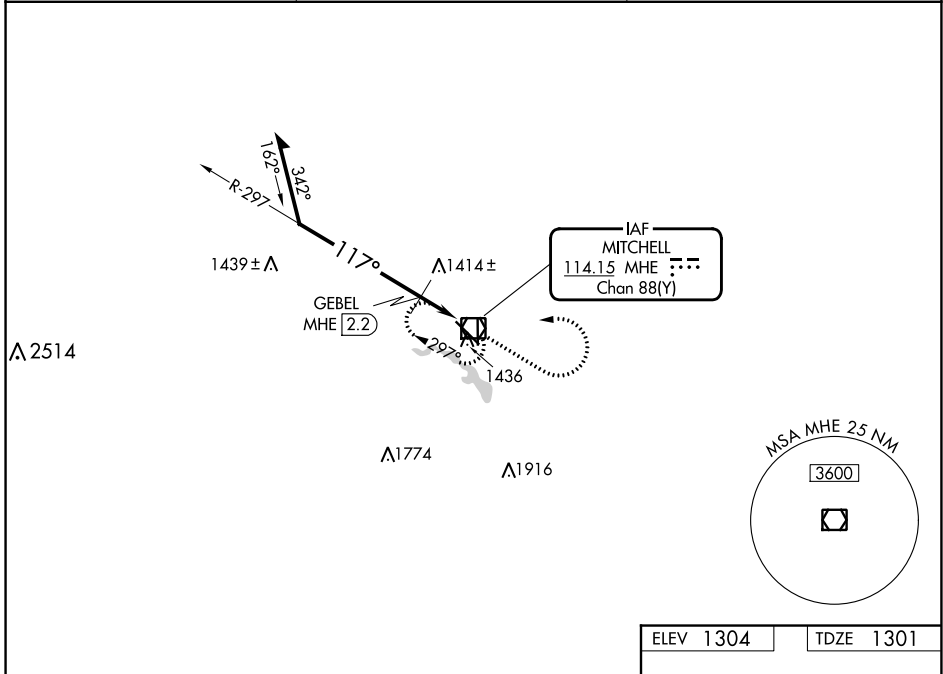
# VOR RWY 13

MITCHELL MUNI (MHE)

**▼** VDP NA with Huron Rgnl altimeter setting. If local altimeter setting not received, use Huron Regional altimeter setting and increase all MDA's 100 feet. Increase S-13 and Circling Cat C visibility ¼ mile, increase GEBEL fix minimums S-13 Cat C visibility ⅓ mile and Cat D ⅓ mile.

**MISSED APPROACH:** Climb to 2900 then climbing left turn to 3000 direct MHE VOR/DME and hold.

ASOS <b>124.175</b>	MINNEAPOLIS CENTER <b>126.25 339.8</b>	UNICOM <b>122.8 (CTAF) 0</b>
------------------------	---	---------------------------------



CATEGORY	A	B	C	D
S-13	1740-1	439 (500-1)	1740-1¼ 439 (500-1¼)	1740-1½ 439 (500-1½)
<b>C</b> CIRCLING	1740-1 436 (500-1)	1760-1 456 (500-1)	1820-1½ 516 (600-1½)	1860-2 556 (600-2)
GEBEL FIX MINIMUMS				
S-13	1680-1 379 (400-1)		1680-1¼ 379 (400-1¼)	
<b>C</b> CIRCLING	1740-1 436 (500-1)	1760-1 456 (500-1)	1820-1½ 516 (600-1½)	1860-2 556 (600-2)

NC-1, 26 DEC 2024 to 23 JAN 2025

NC-1, 26 DEC 2024 to 23 JAN 2025