

WAAS CH <b>69623</b> <b>W27A</b>	APP CRS <b>270°</b>	Rwy Idg <b>4271</b> TDZE <b>239</b> Apt Elev <b>246</b>
--	------------------------	---

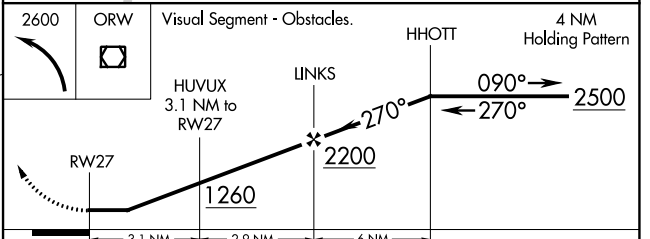
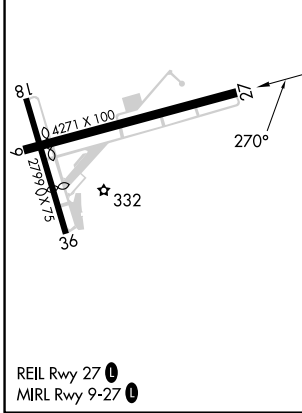
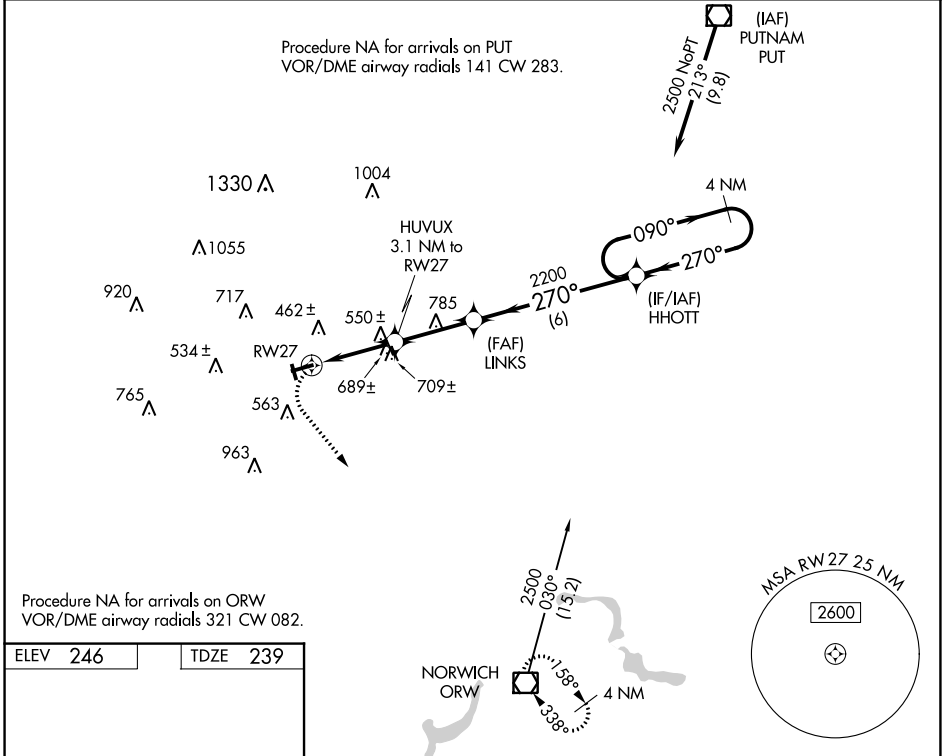
# RNAV (GPS) RWY 27

WINDHAM (IJD)

**Procedure NA at night. DME/DME RNP-0.3 NA. Rwy 27 helicopter visibility reduction below 1 SM NA. When local altimeter setting not received, use Windsor Locks altimeter setting and increase all MDA 80 feet, increase LP and LNAV Cat B and Circling Cats A/B visibility 1/4 SM, increase LP, LNAV and Circling Cat C visibility 1/2 SM.**

**MISSED APPROACH:**  
Climbing left turn to 2600 direct ORW VOR/DME and hold.

ASOS <b>133.675</b>	BRADLEY APP CON <b>127.8 269.325</b>	CLNC DEL <b>128.6</b>	UNICOM <b>122.975 (CTAF) 0</b>
------------------------	---	--------------------------	-----------------------------------



CATEGORY	A	B	C	D
LP MDA	940-1	701 (700-1)	940-2 701 (700-2)	NA
LNAV MDA	960-1	721 (800-1)	960-2 721 (800-2)	NA
CIRCLING	980-1	734 (800-1)	1120-2 1/2 874 (900-2 1/2)	NA

NE-1, 26 DEC 2024 to 23 JAN 2025

NE-1, 26 DEC 2024 to 23 JAN 2025