

LOC/DME I-SFZ	APP CRS	Rwy Idg	5000
111.9	047°	TDZE	429
Chan 56		Apt Elev	441

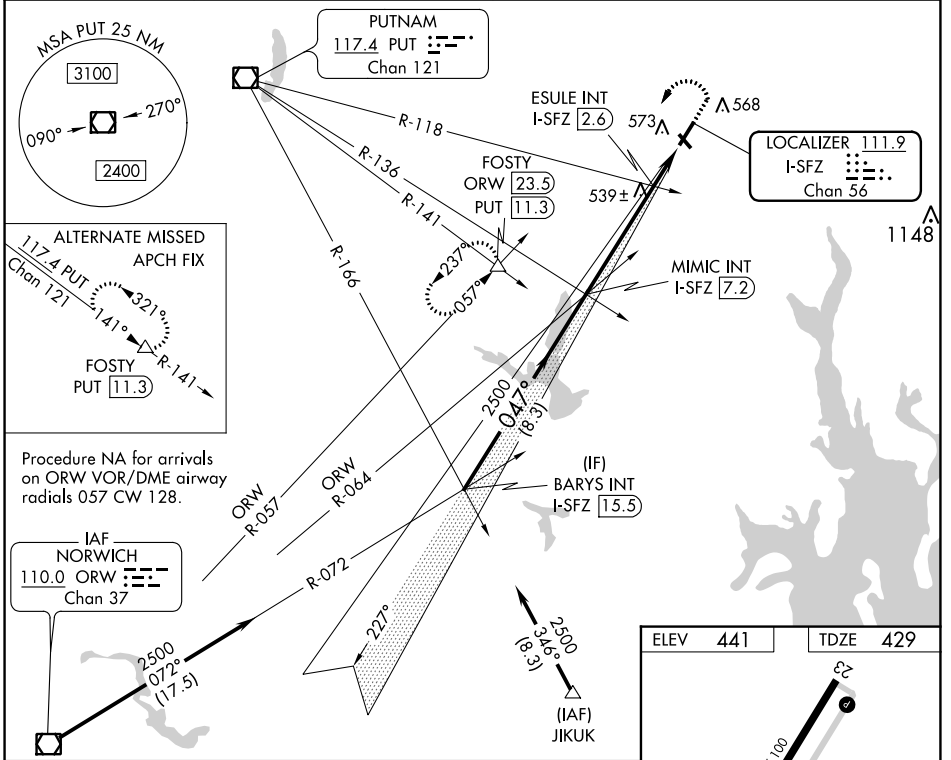
# LOC RWY 5

NORTH CENTRAL STATE (SF/Z)

**NA** Circling Rwy 15, 33 NA at night. VDP NA with Providence altimeter setting. When local altimeter setting not received, use Providence altimeter setting and increase all MDA 100 feet; increase S-5 Cat C and Circling Cat C visibility ¼ mile, and ESULE fix minimums S-5 Cat C visibility ¼ mile.

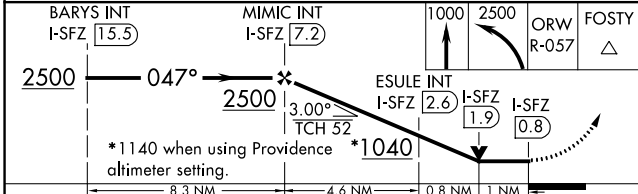
**MALS** MISSED APPROACH: Climb to 1000 then climbing left turn to 2500 on ORW VOR/DME R-057 to FOSTY INT/ ORW 23.5 DME and hold.

AWOS-3PT 120.775	PROVIDENCE APP CON ★ 123.675 244.875	CLNC DEL 124.35	UNICOM 123.075 (CTAF) 0
---------------------	---	--------------------	----------------------------



Procedure NA for arrivals on ORW VOR/DME airway radials 057 CW 128.

IAF NORWICH 110.0 ORW Chan 37



CATEGORY	A	B	C	D
S-5	1040-¾	611 (600-¾)	1040-1½	NA
<b>C</b> CIRCLING	1040-1	599 (600-1)	1040-1¾	NA
ESULE FIX MINIMUMS (DUAL VOR RECEIVERS OR DME REQUIRED)				
S-5	800-¾	371 (400-¾)	800-⅞	NA
<b>C</b> CIRCLING	900-1	459 (500-1)	900-1½	NA

ELEV 441	TDZE 429
----------	----------

HIRL Rwy 5-23 0  
MIRL Rwy 15-33 0  
REIL Rwys 15, 23 and 33 0

FAF to MAP 6.4 NM					
Knots	60	90	120	150	180
Min:Sec	6:24	4:16	3:12	2:34	2:08

NE-1, 26 DEC 2024 to 23 JAN 2025

NE-1, 26 DEC 2024 to 23 JAN 2025