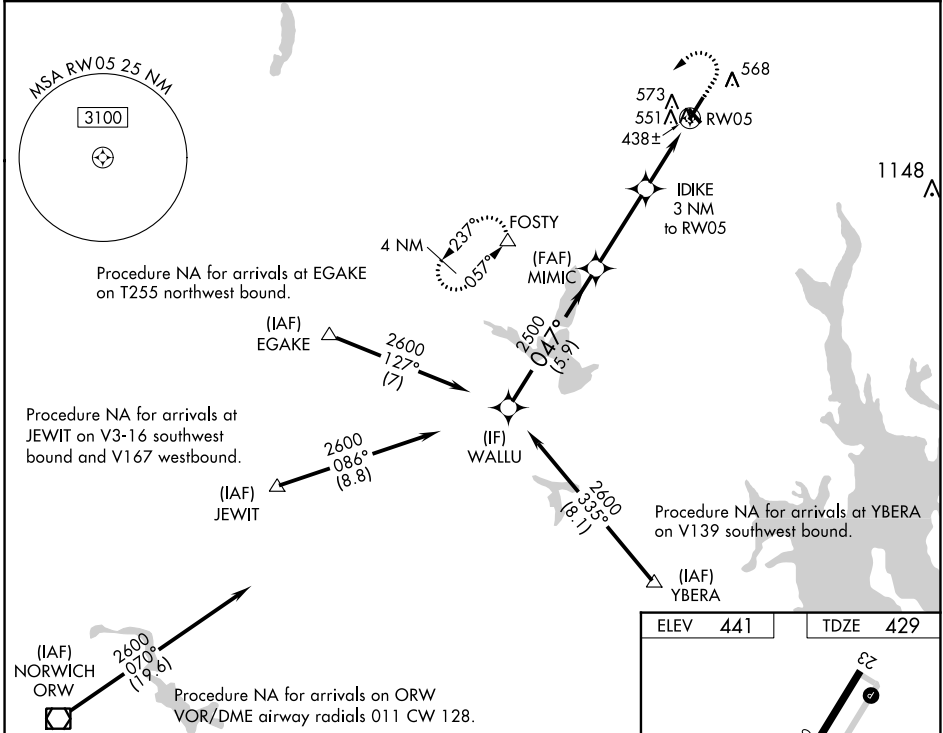


WAAS CH <b>50231</b> <b>W05A</b>	APP CRS <b>047°</b>	Rwy Idg TDZE <b>429</b> Apt Elev <b>441</b>	<b>5000</b>
--	------------------------	---	-------------

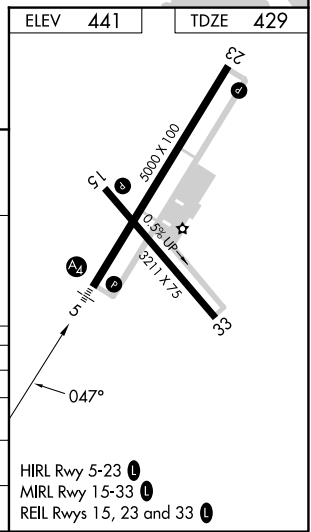
# RNAV (GPS) RWY 5

NORTH CENTRAL STATE (SFZ)

RNP APCH - GPS.		MALS	MISSED APPROACH: Climb to 2000 then climbing left turn to 2500 direct FOSTY and hold.
<p><b>⚠</b> Circling Rwy 15, 33 NA at night. For inoperative MALS, increase LPV all Cats visibility to <math>\frac{3}{8}</math> mile. For inop ALS, increase LPV all Cats visibility to <math>\frac{3}{8}</math> SM and LNAV/VNAV all Cats visibility to <math>1\frac{1}{2}</math> SM. For uncompensated Baro-VNAV systems, LNAV/VNAV NA below <math>-15^{\circ}\text{C}</math> or above <math>54^{\circ}\text{C}</math>.</p>			
AWOS-3PT <b>120.775</b>	PROVIDENCE APP CON * <b>123.675 244.875</b>	CLNC DEL <b>124.35</b>	UNICOM <b>123.075 (CTAF) 0</b>



WALLU		MIMIC		IDIKE		FOSTY	
2600		2500		2500		2000	
0.47°		0.47°		1.1 NM to RW05		△	
GP 3.00°		*1420		3 NM to RW05			
TCH 52		5.9 NM		3.4 NM		1.9 NM	
						1.1	
CATEGORY	A	B	C	D			
LPV DA	700- $\frac{3}{4}$		271 (300- $\frac{3}{4}$ )		NA		
LNAV/VNAV DA	835-1		406 (400-1)		NA		
LNAV MDA	820- $\frac{3}{4}$		391 (400- $\frac{3}{4}$ )		820- $\frac{7}{8}$		NA
					391 (400- $\frac{7}{8}$ )		
<b>C</b> CIRCLING	900-1		459 (500-1)		900-1 $\frac{1}{2}$		NA
					459 (500-1 $\frac{1}{2}$ )		



NE-1, 26 DEC 2024 to 23 JAN 2025

NE-1, 26 DEC 2024 to 23 JAN 2025