

VOR/DME PVD <b>115.6</b> Chan <b>103</b>	APP CRS <b>001°</b>	Rwy Idg TDZE Apt Elev <b>N/A</b> <b>N/A</b> <b>441</b>
--	------------------------	--

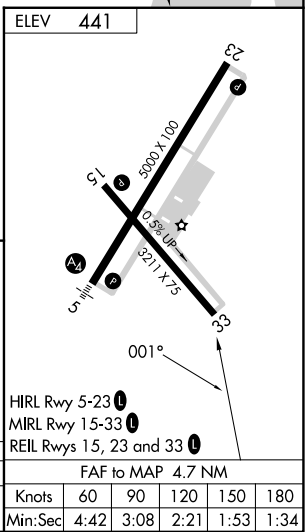
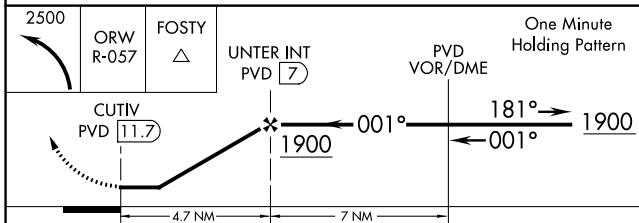
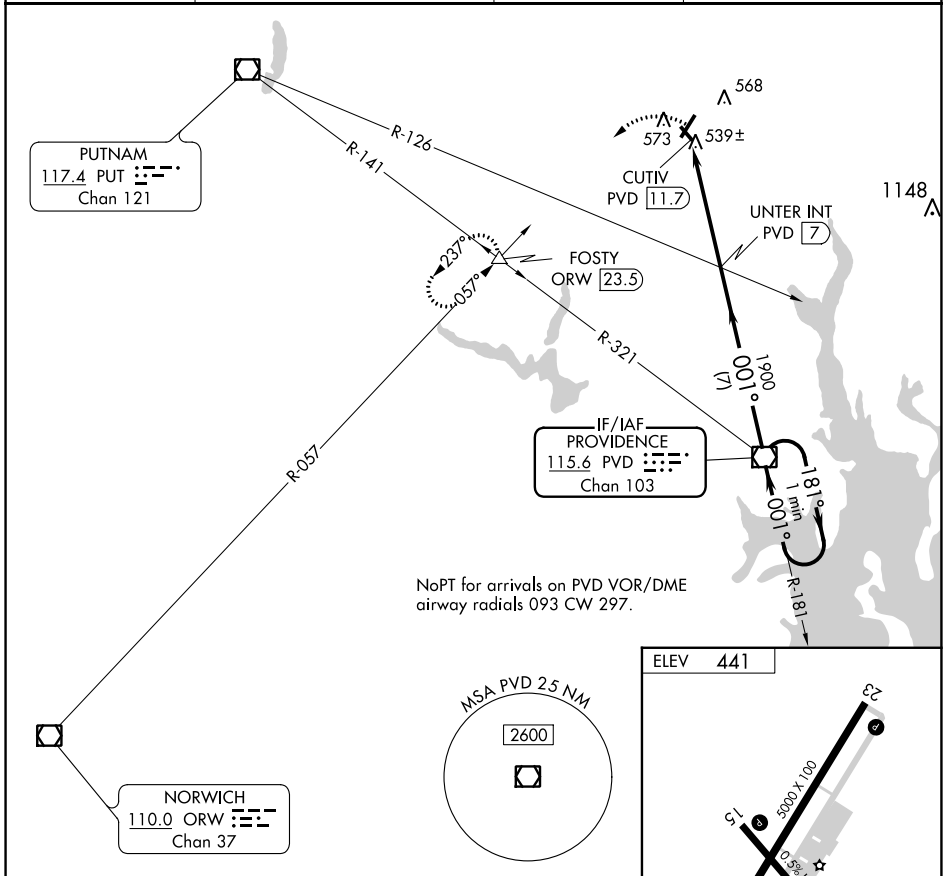
# VOR-A

NORTH CENTRAL STATE (SFZ)

**⚠** When local altimeter setting not received, use Providence altimeter setting and increase all MDA 100 feet, increase Circling visibility Cat C ¼ mile. Circling to Rwy 15/33 NA at night.

MISSED APPROACH: Climbing left turn to 2500 via ORW VOR/DME R-057 to FOSTY INT/ORW 23.5 DME and hold.

AWOS-3PT <b>120.775</b>	PROVIDENCE APP CON ★ <b>123.675 244.875</b>	CLNC DEL <b>124.35</b>	UNICOM <b>123.075 (CTAF) 0</b>
----------------------------	--	---------------------------	-----------------------------------



CATEGORY	A	B	C	D	Knots					
	980-1 539 (600-1)		980-1½ 539 (600-1½)		NA	60	90	120	150	180
CIRCLING					Min:Sec					
					4:42	3:08	2:21	1:53	1:34	

NE-1, 26 DEC 2024 to 23 JAN 2025

NE-1, 26 DEC 2024 to 23 JAN 2025