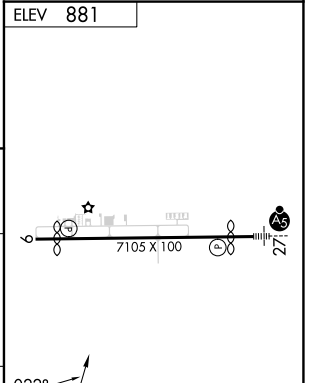
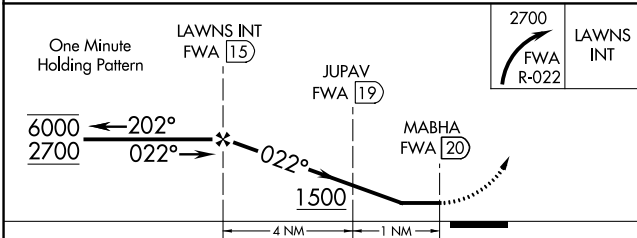
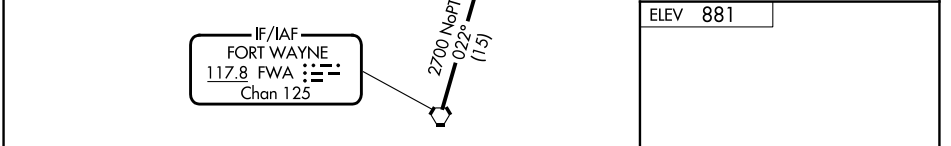
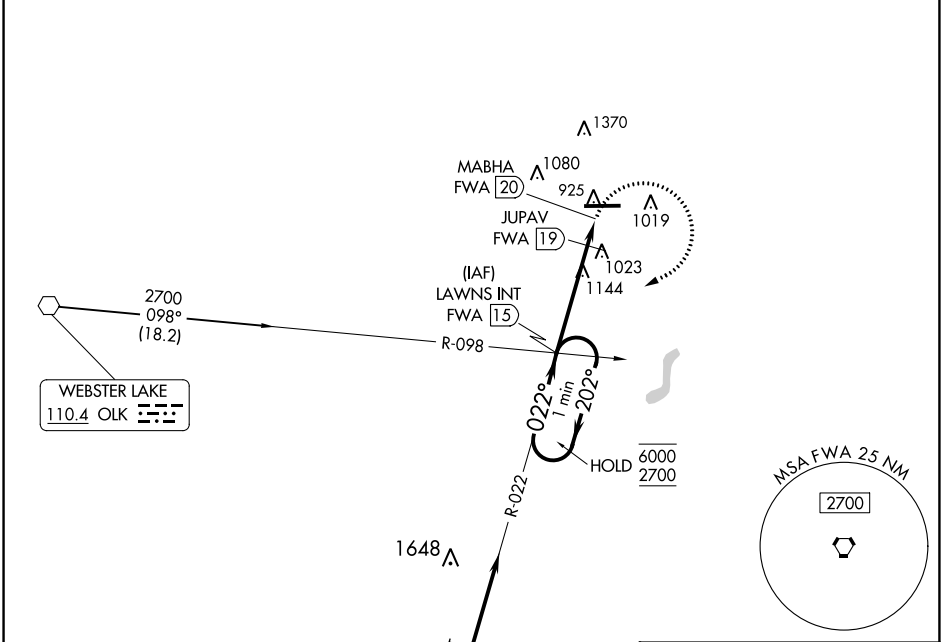


VORTAC FWA 117.8 Chan 125	APP CRS 022°	Rwy Idg TDZE N/A Apt Elev 881
--	------------------------	--

VOR-A
DE KALB COUNTY (GWB)

▽
▲ MISSED APPROACH: Climbing right turn to 2700 on FWA R-022 to LAWNS INT/FWA 1.5 DME and hold, continue climb-in-hold to 2700.

AWOS-3P 124.15	FORT WAYNE APP CON 127.2 284.6	CLNC DEL 126.6	UNICOM 123.0 (CTAF)
--------------------------	--	--------------------------	-------------------------------



CATEGORY	A	B	C	D		
CIRCLING	1500-1 619 (700-1)	1560-1 679 (700-1)	1720-2½ 839 (900-2½)	1720-2¾ 839 (900-2¾)		
JUPAV FIX MINIMUMS						
CIRCLING	1360-1 479 (500-1)	1560-1 679 (700-1)	1720-2½ 839 (900-2½)	1720-2¾ 839 (900-2¾)		
	Knots	60	90	120	150	180
	Min:Sec	5:00	3:20	2:30	2:00	1:40

EC-2, 26 DEC 2024 to 23 JAN 2025

EC-2, 26 DEC 2024 to 23 JAN 2025