

LOC I-DRT 111.9 Chan 56	APP CRS 132°	Rwy Idg 6000 TDZE 1002 Apt Elev 1002
---	------------------------	---

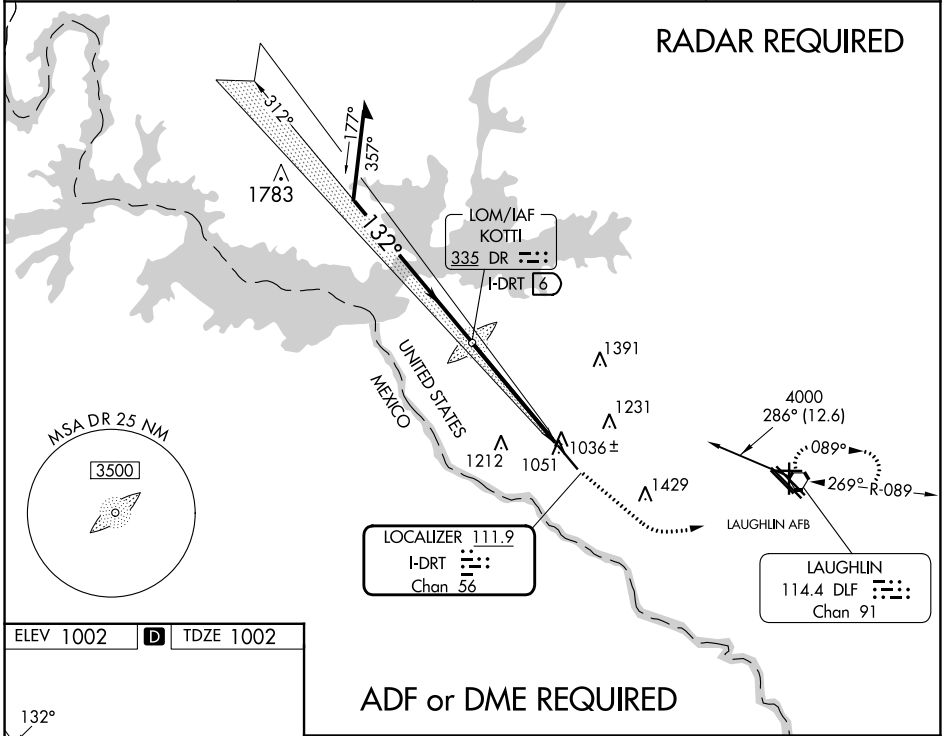
ILS or LOC RWY 13

DEL RIO INTL (DRT)

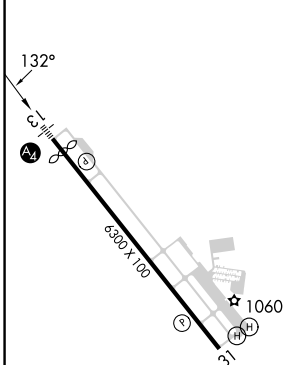
NA Circling NA for Cat D SW of Rwy 13-31. When local altimeter setting not received, use Laughlin AFB altimeter setting and increase all DAs 30 feet, all MDAs 40 feet, increase S-LOC 13 Cat D and Circling Cats C and D visibility ¼ SM. VDP NA when using Laughlin AFB altimeter setting.

MALS
MISSED APPROACH: Climb to 2000 via heading 122° then climbing left turn to 4000 direct DLF VORTAC and hold. Continue climb-in-hold to 4000.

ASOS 118.525	DEL RIO APP CON ★ 119.6 259.1	CLNC DEL 120.5	UNICOM 122.8 (CTAF)
------------------------	---	--------------------------	-------------------------------



ELEV 1002	D	TDZE 1002
-----------	----------	-----------



REIL Rwy 31
MIRL Rwy 13-31

FAF to MAP 4.9 NM

Knots	60	90	120	150	180
Min:Sec	4:54	3:16	2:27	1:58	1:38

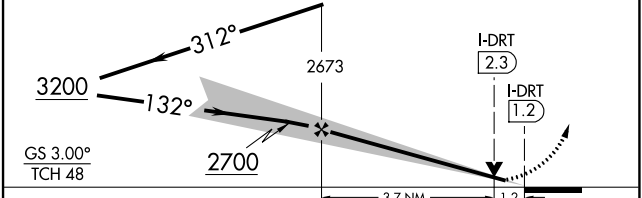
Remain within 10 NM

DR KOTTI LOM I-DRT 6

2000 hdg 122°

4000

DLF



CATEGORY	A	B	C	D
S-ILS 13	1202-¾ 200 (200-¾)			
S-LOC 13	1420-½	418 (500-½)	1420-¾	418 (500-¾)
CIRCLING	1440-1 438 (500-1)	1560-1 558 (600-1)	1740-2 738 (800-2)	1740-2¼ 738 (800-2¼)

SC-3, 26 DEC 2024 to 23 JAN 2025

SC-3, 26 DEC 2024 to 23 JAN 2025