

| | | |
|--|------------------------|---|
| WAAS CH 58039 W11A | APP CRS 106° | Rwy Idg 5502 TDZE 1400 Apt Elev 1419 |
|--|------------------------|---|

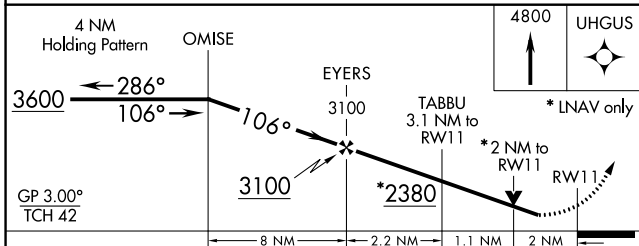
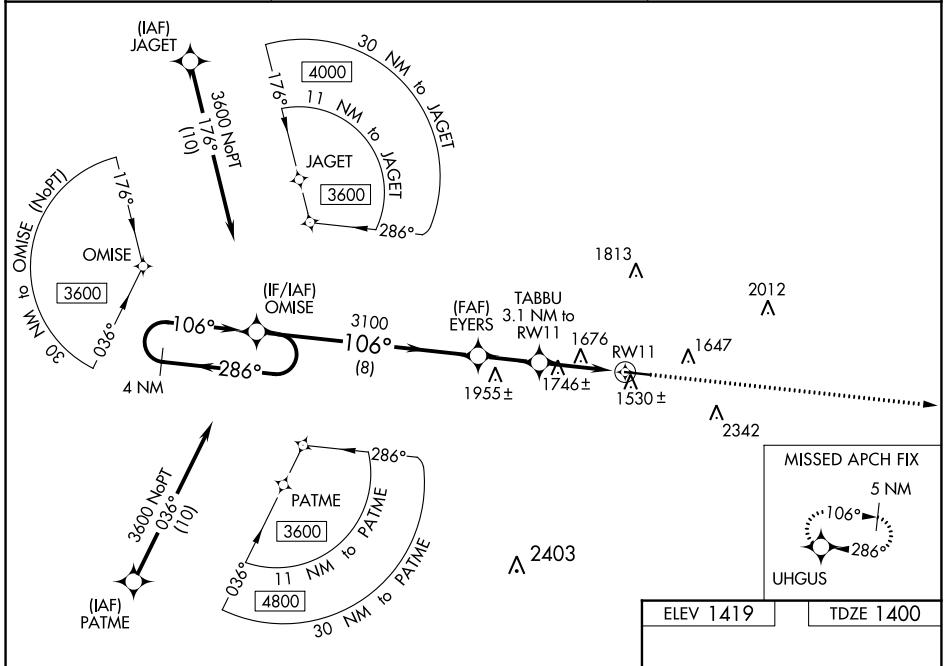
RNAV (GPS) RWY 11

INDIANA COUNTY/JIMMY STEWART FLD (IDI)

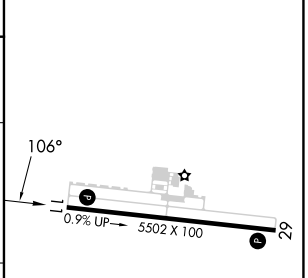
⚠ For uncompensated Baro-VNAV systems, LNAV/VNAV NA below -17°C (2°F) or above 54°C (130°F).
⚠ Baro-VNAV and VDP NA when using Allegheny County altimeter setting. DME/DME RNP-0.3 NA. Rwy 11 helicopter visibility reduction below 3/4 SM NA. When local altimeter setting not received, use Allegheny County altimeter setting and increase LPV DA to 2026 feet and LNAV/VNAV DA to 2156 feet; increase visibility LPV all Cats to 2 1/2 SM and LNAV/VNAV all Cats to 3 SM. Increase all MDA 120 feet and all Cat A and B visibility to 1 1/4 SM and LNAV Cat C and D visibility to 2 1/2 SM.

MISSED APPROACH:
Climb to 4800 direct UHGUS and hold.

| | | |
|--------------------------|---|---------------------------------|
| AWOS-3 126.625 | JOHNSTOWN APP CON * 121.2 299.2 | UNICOM 122.8 (CTAF) 0 |
|--------------------------|---|---------------------------------|



| | |
|-----------|-----------|
| ELEV 1419 | TDZE 1400 |
|-----------|-----------|



| CATEGORY | A | B | C | D |
|-------------------|-----------------------|-----------------------|-----------------|-----------------|
| LPV DA | 1907-1 3/4 | | 507 (500-1 3/4) | |
| LNAV/VNAV DA | 2037-2 1/2 | | 637 (700-2 1/2) | |
| LNAV MDA | 2060-1 | 660 (700-1) | 2060-1 7/8 | 660 (700-1 7/8) |
| C CIRCLING | 2120-1 701 (800-1) | 2180-1 761 (800-1) | 2660-3 | 1241 (1300-3) |

REIL Rwy 11 0
HIRL Rwy 11-29 0

NE-4, 26 DEC 2024 to 23 JAN 2025

NE-4, 26 DEC 2024 to 23 JAN 2025