

WAAS CH <b>42740</b> <b>W32A</b>	APP CRS <b>319°</b>	Rwy Idg TDZE Apt Elev	<b>4599</b> <b>821</b> <b>826</b>
--	------------------------	-----------------------------	---

# RNAV (GPS) RWY 32

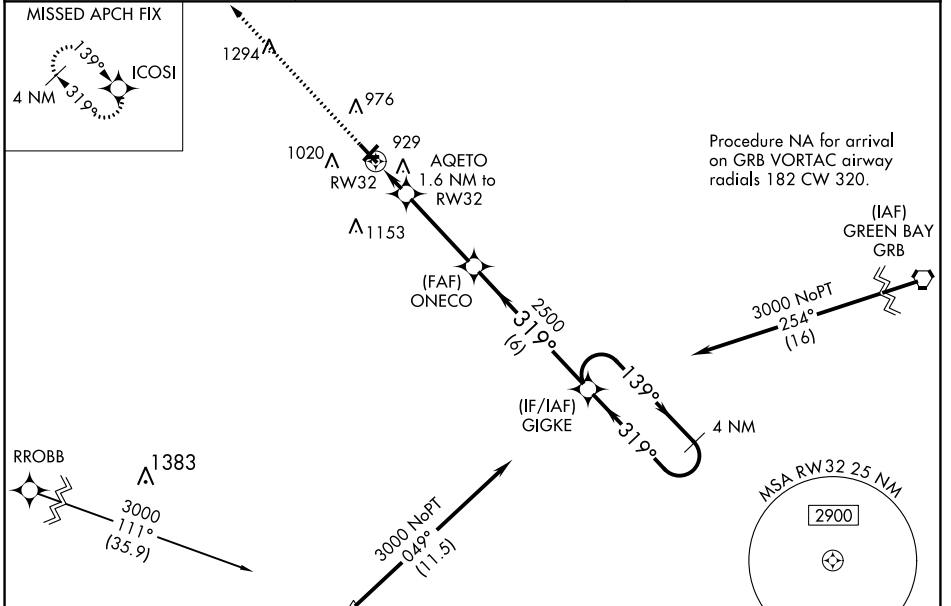
CLINTONVILLE MUNI (CLI)

RNP APCH.

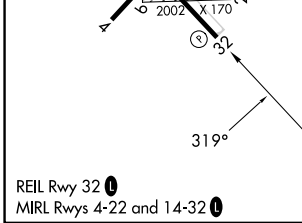
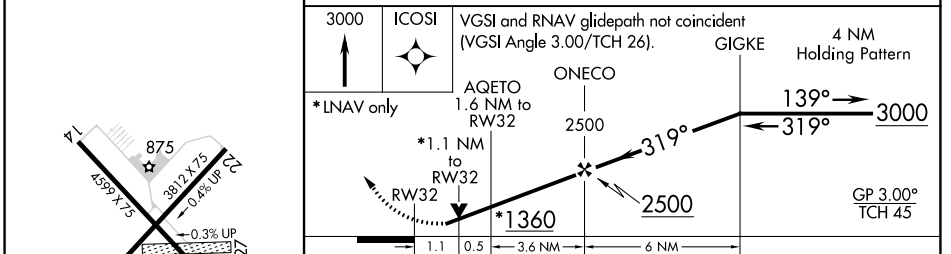
▼ For uncompensated Baro-VNAV systems, LNAV/VNAV NA below -16°C or above 54°C. Rwy 32 helicopter visibility reduction below ¾ SM NA. Circling Rwy 14 NA at night. Circling NA to Rwys 9 and 27.

MISSED APPROACH:  
Climb to 3000 direct  
ICSI and hold.

AWOS-3 <b>120.675</b>	GREEN BAY APP CON ★ <b>126.3 338.2</b>	UNICOM <b>122.8 (CTAF) ①</b>
--------------------------	---	---------------------------------



ELEV 826	TDZE 821
----------	----------



CATEGORY	A	B	C	D
LPV DA	1071-7/8	250 (300-7/8)		NA
LNAV/VNAV DA	1209-11/8	388 (400-11/8)		NA
LNAV MDA	1180-1	359 (400-1)		NA
<b>C</b> CIRCLING	1340-1	514 (600-1)		NA

EC-3, 26 DEC 2024 to 23 JAN 2025

EC-3, 26 DEC 2024 to 23 JAN 2025