

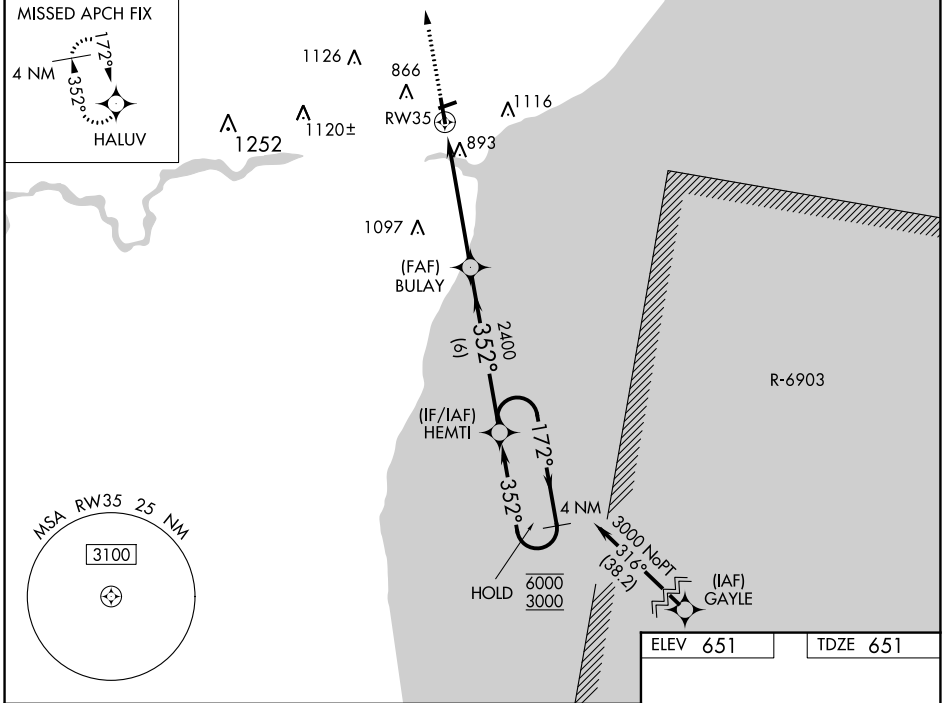
WAAS CH <b>82611</b> <b>W35A</b>	APP CRS <b>352°</b>	Rwy Idg TDZE Apt Elev	<b>5001</b> <b>651</b> <b>651</b>
--	------------------------	-----------------------------	---

# RNAV (GPS) RWY 35

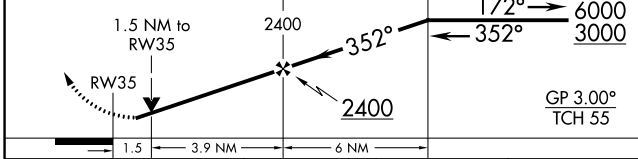
MANITOWOC COUNTY (MTW)

RNP APCH - GPS.		MISSED APPROACH: Climb to 3000 direct HALUV and hold.
<b>▽</b> Rwy 35 helicopter visibility reduction below 3/4 SM NA. For uncompensated Baro-VNAV systems, LNAV/VNAV NA below -16°C or above 54°C.		

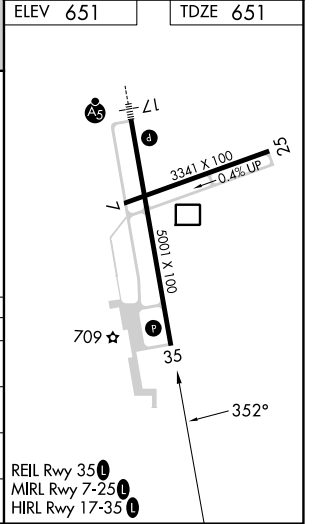
AWOS-3PT <b>123.775</b>	GREEN BAY APP CON ★ <b>120.2 338.2</b>	UNICOM <b>122.8 (CTAF) ①</b>
----------------------------	---	---------------------------------



3000 HALUV VGSi and RNAV glidepath not coincident (VGSi Angle 3.00/TCH 44). 4 NM Holding Pattern



CATEGORY	A	B	C	D
LPV DA		957-7/8	306 (400-7/8)	
LNAV/VNAV DA		1199-15/8	548 (600-15/8)	
LNAV MDA	1160-1	509 (600-1)	1160-13/8	509 (600-13/8)
<b>C</b> CIRCLING	1200-1	549 (600-1)	1420-2 1/4 769 (800-2 1/4)	1480-2 3/4 829 (900-2 3/4)



EC-3, 26 DEC 2024 to 23 JAN 2025

EC-3, 26 DEC 2024 to 23 JAN 2025