

APP CRS	Rwy ldg	<b>3204</b>
<b>032°</b>	TDZE	<b>11</b>
	Apt Elev	<b>12</b>

# RNAV (GPS) RWY 2

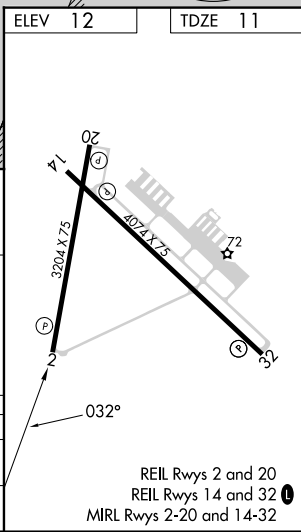
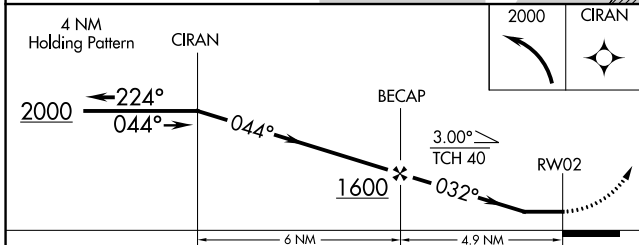
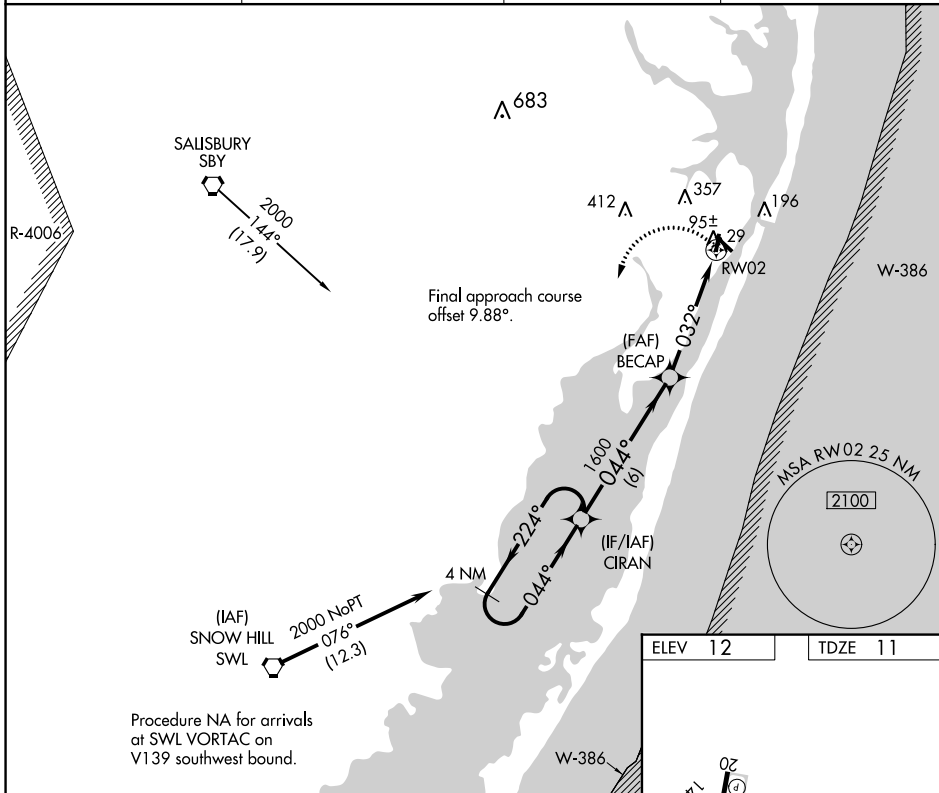
OCEAN CITY MUNI ( OXB )

RNP APCH.

▼ When local altimeter setting not received, use Salisbury altimeter setting and increase all MDA 60 feet and visibility LNAV Cat C 1/8 SM and Circling Cat C 1/4 SM. Straight-in Rwy 2 NA at night, Circling Rwy 2, 14, 20 NA at night. Rwy 2 helicopter visibility reduction below 1 SM NA.

MISSED APPROACH: Climbing left turn to 2000 direct CIRAN and hold.

ASOS <b>119.025</b>	PATUXENT APP CON ★ <b>127.95 314.0</b>	CLNC DEL <b>121.75</b>	UNICOM <b>123.05 (CTAF) 0</b>
------------------------	---	---------------------------	----------------------------------



CATEGORY	A	B	C	D
LNAV MDA	420-1	409 (500-1)	420-1 1/4 409 (500-1 1/4)	NA
CIRCLING	480-1 468 (500-1)	660-1 648 (700-1)	660-1 3/4 648 (700-1 3/4)	NA

NE-3, 26 DEC 2024 to 23 JAN 2025

NE-3, 26 DEC 2024 to 23 JAN 2025