

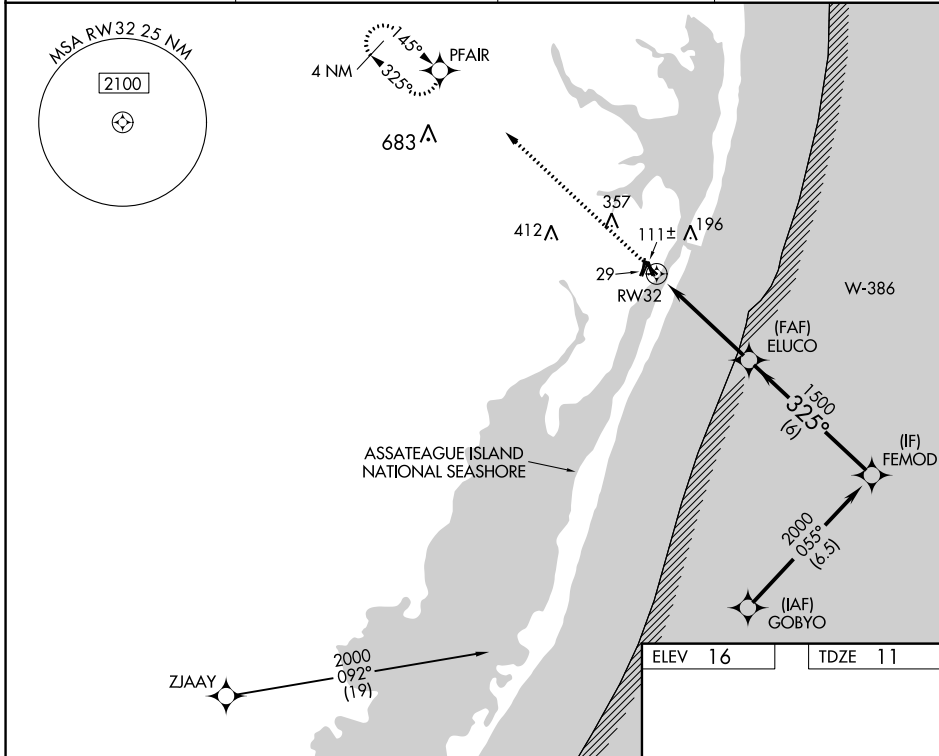
WAAS CH <b>61246</b> <b>W32A</b>	APP CRS <b>325°</b>	Rwy ldg TDZE Apt Elev	<b>4074</b> <b>11</b> <b>16</b>
--	------------------------	-----------------------------	---------------------------------------

# RNAV (GPS) RWY 32

OCEAN CITY MUNI (OXB)

RNP APCH - GPS.	MISSED APPROACH: Climb to 2000 direct PFAIR and hold.
<b>▽</b> For uncompensated Baro-VNAV systems, LNAV/VNAV NA <b>▲</b> below -11°C or above 54° C.	

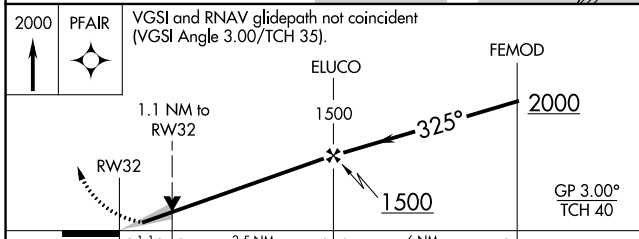
ASOS <b>119.025</b>	PATUXENT APP CON ★ <b>127.95 314.0</b>	CLNC DEL <b>121.75</b>	UNICOM <b>123.05</b> (CTAF) <b>📞</b>
------------------------	---	---------------------------	---



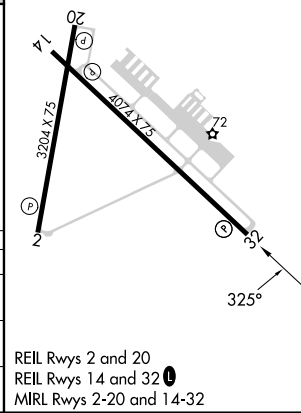
NE-3, 26 DEC 2024 to 23 JAN 2025

NE-3, 26 DEC 2024 to 23 JAN 2025

ELEV 16	TDZE 11
---------	---------



CATEGORY	A	B	C	D
LPV DA		261-1	250 (300-1)	
LNAV/VNAV DA		289-1	278 (300-1)	
LNAV MDA		380-1	369 (400-1)	



REIL Rwy 2 and 20  
REIL Rwy 14 and 32 **📞**  
MIRL Rwy 2-20 and 14-32