

WAAS CH 60902 W17A	APP CRS 171°	Rwy Idg TDZE Apt Elev	5500 383 390
--	------------------------	-----------------------------	---

RNAV (GPS) RWY 17

LEESBURG EXEC (JYO)

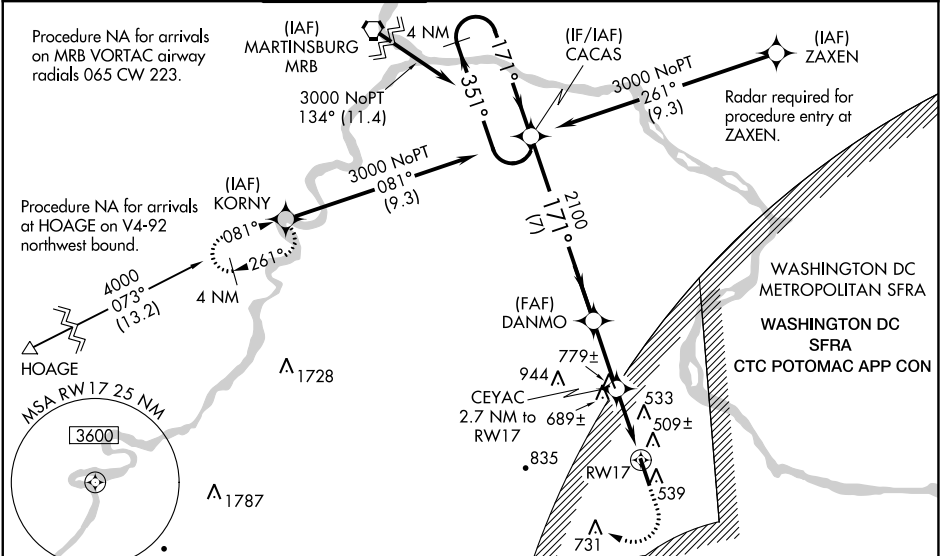
RNP APCH - GPS.

⚠ For uncompensated Baro-VNAV systems, LNAV/VNAV NA below -15°C or above 41°C.
⚠ When local altimeter setting not received, use Washington Dulles Intl altimeter setting: increase LPV DA to 665 feet; increase LNAV/VNAV DA to 757 feet and increase all visibilities ½ SM; increase all MDA 40 feet and visibility LNAV Cat C/D and Circling Cat C ¼ SM. Inop table does not apply to LPV all Cats. For inop ALS when using Washington Dulles Intl altimeter setting, increase visibility LPV Cats A/B to ¾ SM and inop table does not apply to LNAV/VNAV all Cats. Baro-VNAV NA when using Washington Dulles Intl altimeter setting. For inop ALS, increase visibility LNAV/VNAV Cats A/B to 1 and LNAV Cats C/D to 1½.

ODALS

MISSED APPROACH:
Climb to 1100 then climbing right turn to 4000 direct KORNYY and hold.

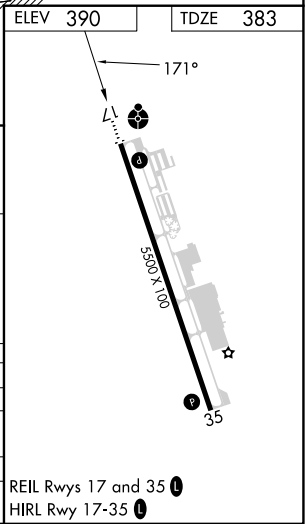
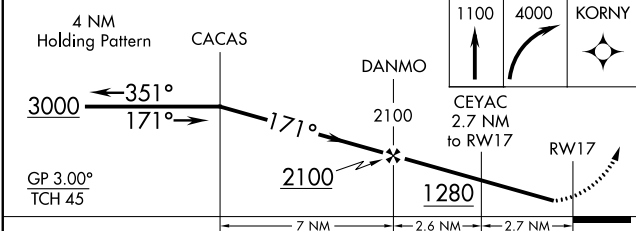
AWOS-3 125.225	POTOMAC APP CON 125.05 338.25	LEESBURG TOWER ★ 127.5 (CTAF) 0	GND CON 120.5	CLNC DEL 120.5	CLNC DEL 118.55 (When twr closed)	UNICOM 122.975
--------------------------	---	--	-------------------------	--------------------------	---	--------------------------



NE-3, 26 DEC 2024 to 23 JAN 2025

NE-3, 26 DEC 2024 to 23 JAN 2025

ELEV 390	TDZE 383
----------	----------



CATEGORY	A	B	C	D
LPV DA		633-¾	250 (300-¾)	
LNAV/VNAV DA		725-¾	342 (400-¾)	
LNAV MDA	940-¾	557 (600-¾)	940-1⅜	557 (600-1⅜)
CIRCLING	940-1	550 (600-1)	1040-1¾	1300-3
			650 (700-1¾)	910 (1000-3)